

4th 2015 IEEE Portuguese Meeting on Bioengineering

26-28 February 2015
Faculty of Engineering
University of Porto



PROCEEDINGS BOOK

2015 IEEE
4th Portuguese Meeting on Bioengineering
ENBENG
26-28 February 2015
Porto - Portugal

EDITORS

Renato Natal Jorge
Jorge Belinha
Pedro Martins
Marco Parente
Adelino Leite-Moreira
João Manuel R. S. Tavares



Preface

This book contains the abstracts and full papers presented at the IEEE 4th Portuguese Meeting on Bioengineering (ENBENG) organized by the IEEE Engineering in Medicine & Biology Society (EMBS) Chapter of the IEEE Portugal Section that was held in “Atmosfera m”, in the city of Porto, between 26th and 28th, February of 2015.

The Portuguese Meeting on Bioengineering is one of most important meetings organized in Portugal related with the Bioengineering field and where students and researchers present and discuss the preeminent work developed in Portugal in the field. The meeting has been organized since 2011: the first was held in Lisbon, in 2011; the second in Coimbra, in 2012; and the third occurred in Braga, in 2013.

ENBENG2015 had 107 works submitted, from which 52 were accepted for oral presentations distributed by 10 sessions, and 31 as posters. The submissions involved authors from several Portuguese Institutions, which shows the importance of the Bioengineering and Biomedical Engineering in Portugal nowadays. Additionally, 9 submissions were from foreign countries. The received contributions address several topics related to Bioengineering, including Biomaterials, Nanobiotechnology, Tissue Engineering, Biology of Stem Cells and Regenerative Medicine, Bioprocess Engineering, Bioinformatics Engineering and Biomolecular Engineering, Biomechanics and Computational Biology, Biomedical Signal Processing, Radiology and Biomedical Imaging, Image Processing, Bioinstrumentation, Biosensors and Neuroengineering, Medical Robotics and Human-Machine Interface, Clinical Informatics, Modeling of Physiological Systems, Domicile Autonomy Assistance and Education in Bioengineering, which emphasis the multidisciplinary of the field.

We would like to thank to all the Sponsors, members of the Scientific Committee, Invited Lecturers and Authors for sharing their work and Participants for contributing to the effective discussion forum established during the meeting. Finally, we acknowledge the Portuguese Chapter of the IEEE Engineering in Medicine & Biology Society (EMBS) for the privilege that was the organization this edition of The IEEE Portuguese Meeting on Bioengineering and for the support offered.

Porto, February 26th, 2015

The Organizing Committee:

Renato M. Natal Jorge

Jorge Belinha

Pedro A. L. S. Martins

Marco P. L. Parente

Adelino Leite-Moreira

João Manuel R. S. Tavares

(Universidade do Porto & INEGI)

Introduction of the Chair of IEEE-EMBS Portuguese Chapter

The IEEE Engineering in Medicine & Biology Society (EMBS) is the world's largest international society of biomedical engineers. It is committed to the application of engineering sciences and technology for the advance of medicine and biology, to the promotion of the Engineering professions that aim to improve health and enhance quality of life and the development of their professionals, as well as to promote multidisciplinary scientific and technical events for dissemination of knowledge.

In Portugal it is represented by its Portugal Section Chapter, which congregates Portuguese IEEE-EMBS members and has the goal of promoting synergies between the engineering and the life sciences for their development, through the generation of knowledge and its application in an integrated and multidisciplinary way.

In the last ten years there has been a huge increase of the academic offer in the areas of Biomedical Engineering, Biological Engineering and Bioengineering. Presently, Portugal has more than one thousand graduates in these areas and there are also hundreds of students currently attending the corresponding undergraduate and graduate programs.

It is our belief that the objectives of the IEEE-EMBS stated above correspond to the needs and aspirations of the growing community of Portuguese professionals in the areas of Biomedical Engineering, Biological Engineering and Bioengineering. We believe that the IEEE-EMBS Portuguese Chapter is the organization with better conditions to promote these professionals and carry out the dissemination of knowledge in these areas.

The IEEE Portuguese Meeting on Bioengineering (ENBENG), now in its 4th edition, is fundamental to fulfill IEEE-EMBS goals in Portugal. This event brings together people and entities from the academic, business and clinical areas, connected to the disciplines of Biomedical Engineering and Bioengineering, and it is a forum for the dissemination and promotion of their activities and for establishing synergies and opportunities for development and cooperation. It addresses a wide range of topics related to Bioengineering, reflecting the multidisciplinary nature of the field, and focus on the participation of graduate students and young researchers providing them the opportunity to present their works.

In our opinion, the IEEE Portuguese Meeting on Bioengineering (ENBENG) is the ideal event to congregate the Portuguese community of Biomedical Engineering, Biological Engineering and Bioengineering. The IEEE-EMBS Portuguese Chapter is committed to the annual realization of this meeting and will spare no efforts to make it the leading occasion for bringing together the professionals and students from this growing community.

Miguel Morgado

Chair, IEEE-EMBS Portuguese Chapter

Proceedings of the 2015 IEEE 4th Portuguese Meeting on Bioengineering, Porto, Portugal, 26-28 February 2015

Table of Contents

Preface	iii
Introduction of the Chair of IEEE-EMBS Portuguese Chapter	v
Conference Program	xiii
<i>Abstracts</i>	
ACTIVE PEDAL EXERCISER FOR LEG REHABILITATION <i>Garcia, Filipa; Ferreira, João P.; Ferreira, Paulo; Cruz, Stephane; Crisóstomo, Manuel; Coimbra, A. Paulo</i>	3
OPTIMIZING THE APPROXV1 ALGORITHM FOR COPING WITH DIFFRACTION EFFECTS IN PROTEIN-BASED VOLUMETRIC MEMORIES <i>Trincã, Dragoş; Rajasekaran, Sanguthevar</i>	5
AMINO ACID DERIVATIZED MONOLITHS FOR PURIFICATION OF A DNA VACCINE AGAINST INFLUENZA. <i>Bicho, D.; Caramlo-Nunes, C.; Santos, B.F.; Sousa, A.; Sousa, F.; Queiroz, J.A.; Tomaz, C.T.</i>	7
MODELING PARTITIONING OF PROTEINS IN AQUEOUS TWO-PHASE SYSTEM <i>P.C. de Barros, Dragana; R.R. Campos, Sara; Azevedo, A.M.; Baptista, A.M.; Aires-Barros, M.R.</i>	9
SOFTWARE FOR HUMAN GAIT ANALYSIS AND CLASSIFICATION <i>Vieira, Alexandra; Sobral, Heloísa; Ferreira, João P.; Ferreira, Paulo; Cruz, Stephane; Crisóstomo, Manuel; Coimbra, A. Paulo</i>	11
MEDICAL THERMAL IMAGING PROCEDURE FOR HAVS ASSESSMENT <i>Vardasca, Ricardo; Gabriel, Joaquim</i>	13
HUMAN GAIT ANALYSIS USING INSTRUMENTED SHOES <i>Sobral, Heloísa; Vieira, Alexandra; Ferreira, João P.; Ferreira, Paulo; Cruz, Stephane; Crisóstomo, Manuel; Coimbra, A. Paulo</i>	15
PREPARATION AND CHARACTERIZATION OF AMYLOSE-PYRAZINAMIDE INCLUSION COMPLEXES <i>C. Ribeiro, Andresa; P. Fonseca, Luis; M. D. Soares, Rosane; P. da Silveira, Nádia; L. Peres, Gisele</i>	17
RELATIONSHIP BETWEEN AREA AND MOMENT OF INERTIA WITH PUBOVISCERAL MUSCLE DISPLACEMENT BY BIOMECHANICAL MODELS <i>Da Roza, Thuane; Brandão, Sofia; Mascarenhas, Teresa; Ramos, Isabel; Duarte, José Alberto; Natal Jorge, Renato</i>	19
A nucleoid segmentation method robust to varying nucleoid number <i>Santinha, João; Gonçalves, Nádia; Mora, André D.; Ribeiro, Andre S.; Fonseca, José</i>	21

OPTIMIZATION OF MINIEMULSION PROCESS USING DIFFERENT SOLVENTS <i>C.D. Pfluck, Ana; P.C. de Barros, Dragana; A. Lopes, Clara; P. Fonseca, Luis</i>	23
ELECTROSPUN MATS OF BIODEGRADABLE CHITOSAN-BASED POLYURETHANE UREA <i>Vieira, Tânia; Borges, João Paulo; Henriques, Célia</i>	25
Anaesthesia induction in small mammal's using an instrumented anaesthetic chamber <i>Correia, Rui; Pereira, Ana; Gabriel, Joaquim; Antunes, Luis</i>	27
Biomechanical simulation of the human ear <i>Areias, B.; Parente, M.P.L.; Gentil, F.; Natal Jorge, R.M.; Fernandes, A.A.</i>	29
DEVELOPMENT OF A UNIVERSAL SURGICAL GUIDE TO PERFORM LOW INVASIVE KNEE SURGERIES <i>M. Marques, J. Belinha, M. Parente, A.A. Fernandes, A.F. Oliveira, J.M. Vilaça, R.M. Natal Jorge</i>	31
A web-based framework using a Model-View-Controller architecture for Human motion analysis <i>Joana Rosa; Hugo Silva; Ricardo Matias</i>	33
MECHANICAL RESONANCE IN HUMAN CHROMOSOMES <i>Branco, Tiago; Patrício, Miguel; Caramelo, Francisco; Botelho, Maria Filomena</i>	35
HAND THERAPIST: A REHABILITATION APPROACH BASED ON WEARABLE TECHNOLOGY AND VIDEO GAMING <i>Rastislav Lipovský; Hugo Alexandre Ferreira</i>	37
A LIGHT-GUIDE OPTIMIZATION FOR PROOF-OF-PRINCIPLE OF A MEGAVOLTAGE ORTHOGONAL RAY IMAGING PROTOTYPE <i>Hugo Simões; Paulo Crespo</i>	39
GAMMA DISTRIBUTION MODEL IN BREAST CANCER DIFFUSION-WEIGHTED IMAGING <i>Filipa Borlinhas; Luísa Nogueira; Sofia Brandão; Rita G. Nunes; Joana Loureiro; Isabel Ramos; Hugo A. Ferreira</i>	41
HUMAN BRAIN TRACTOGRAPHY: A DTI vs DKI COMPARISON ANALYSIS <i>Ricardo Loução; Rita G. Nunes; Rafael Neto-Henriques; Marta Correia; Hugo Ferreira</i>	43
POPULATION-BASED DOSIMETRY IN NUCLEAR MEDICINE AND PET: DEVELOPMENT OF PORTUGUESE FEMALE AND MALE ANTHROPOMORPHIC MODELS <i>Ana Teresa Nunes; Miguel Patricio; Francisco Alves</i>	45
ANALYSIS OF GATED MYOCARDIAL PERFUSION SPECT IMAGES BASED ON COMPUTATIONAL IMAGE REGISTRATION <i>Raquel S. Alves; Diogo Borges Faria; Durval Campos Costa; João Manuel R. S. Tavares</i>	47
UPGRADING WHEAT STRAW TO HOMO AND CO-POLYHYDROXYALKANOATES <i>M. Teresa Cesário; Rodrigo Raposo; M. Catarina M. D de Almeida; Bruno S. Ferreira; Frederik van Keulen; M. Manuela R. da Fonseca</i>	49
EFFECT OF TRANSIENT MAGNETIC STIMULATION ON ZINC SIGNALS ASSOCIATED WITH SYNAPTIC PLASTICITY IN HIPPOCAMPAL CA3 AREA <i>Antónia Maura A. Ferreira, Fátima C. Bastos, Nuno Saraiva Santos, Sónia C.P. Sousa, Paulo Crespo, Paulo J.B. Mendes, M. Emília Quinta-Ferreira</i>	51
MAXWELL'S EQUATIONS BASED 3D MODEL OF LIGHT SCATTERING IN THE RETINA <i>Miriam Santos, Adérito Araújo, Sílvia Barbeiro, Francisco Caramelo, António Correia, Maria Isabel Marques, Miguel Morgado, Luís Pinto, Pedro Serranho, Rui Bernardes</i>	53
SHIELDING THE MAGNETIC FIELD FROM A TRANSCRANIAL STIMULATOR USING ALUMINIUM AND IRON: SIMULATION AND EXPERIMENTAL RESULTS <i>Nuno Saraiva Santos, Sónia C.P. Sousa, Paulo Crespo, Pedro Cavaleiro Miranda, Ricardo Salvador, João Silvestre</i>	55

ZINC CHANGES EVOKED BY PHENOLIC COMPOUNDS AND EFFECT ON TEA-LTP AT HIPPOCAMPAL MOSSY FIBER SYNAPSES	57
<i>Fátima C. Bastos, Sandra A. Lopes, Vanessa N. Corceiro, Carlos M. Matias, Paulo J.B. Mendes, Fernando D.S. Sampaio dos Aidos, José C. Dionísio, Rosa M. Quinta-Ferreira, M. Emília Quinta-Ferreira</i>	
Metabolic.Care: development and characterization of a new thermographic platform for diabetic foot detection	59
<i>Helena Catarina Pereira, Pedro do Mar, Carlos Correia</i>	
DEVELOPMENT OF A HIGH-THROUGHPUT MONITORING TECHNIQUE OF BACTERIA PHOTODYNAMIC INACTIVATION	61
<i>Bernardo Cunha, Pedro N. Sampaio, Cecília R.C. Calado</i>	
AN ULTRA-HIGH RESOLUTION PRECLINICAL POSITRON EMISSION TOMOGRAPHY SCANNER	63
<i>P Martins, A Blanco, P Crespo, MFF Marques, RF Marques, PM Gordo, M Kajetanowicz, G Korcyl, L Lopes, J Michel, M Palka, M Traxler, AJ Abrunhosa, M Couceiro, P Fonte</i>	
SCREENING OF L-HISTIDINE BASED LIGANDS TO PURIFY THE SUPERCOILED PLASMID DNA ISOFORM	65
<i>Lúcia Amorim, Fani Sousa, João Queiroz, Carla Cruz, Ângela Sousa</i>	
OPTIMIZATION OF INVESTMENT CASTING OF Ti6Al4V HIP PROSTHESES BY NUMERICAL AND EXPERIMENTAL METHODS	67
<i>Nannan Song, Shenghua Wu, Rui Neto, Margarida Machado</i>	
ON PRODUCING CUSTOMISED SOFT-TISSUE PROSTHESES USING DIGITAL TOOLS AND SILICONE CASTING TECHNIQUES	69
<i>Mafalda Couto, Margarida Machado, Rui Neto</i>	
<i>Papers</i>	
In silico comparasion of 11 different radioisotopes for palliative treatment of bone metastases	73
<i>Guerra Liberal, Francisco; Tavares, Adriana; Manuel R. S. Tavares, João</i>	
Interaction studies of amyloid beta-peptide with the natural compound resveratrol	79
<i>Stephanie Andrade, Joana A. Loureiro, Manuel A. N. Coelho, Maria do Carmo Pereira</i>	
Analysis of stresses in drilled composite materials	83
<i>M.G. Fernandes; R.M. Natal Jorge; E.M.M. Fonseca</i>	
EXTRACTION OF ZERA® FUSION PROTEINS IN AQUEOUS TWO-PHASE SYSTEMS	87
<i>Jacinto, Maria João; Archinti, Marco; Marzábal, Pau; Azevedo, Ana M.; Aires-Barros, M. Raquel</i>	
Mechanical Tests in All Regions of the PIP Breast Implants	93
<i>Ramião, Nilza; Martins, Pedro; Fernandes, A. Augusto; Barroso, Maria; Santos, Diana</i>	
Assistance and Rehabilitation of Gait Disorders using Active Lower Limb Orthoses	97
<i>Figueiredo, Joana; Santos, Cristina P.; Moreno, Juan C.</i>	
Urinary Incontinence In Musicians: A Preliminary Study	103
<i>Masteling, Mariana; Mascarenhas, Teresa; Natal, Renato</i>	
Analysis of Multiple Sclerosis DTI Images that Uses Tract Based Spatial Statistics	107
<i>Oliveira, João; Morais, Ricardo; Baptista, Sónia; Pereira, João; Castelo-Branco, Miguel</i>	
A new Method for Predicting Epilepsy Seizure	111
<i>Abdellatif Abuimara</i>	
Implementation of a multivibrational medical device to assist the removal of teeth and roots	115
<i>Setas, Sara; Seabra, Eurico; Silva, Luís F.; Puga, Helder; Pombo, Cátia; Mendes, Joaquim Gabriel</i>	

RANDOM DECISION FORESTS FOR AUTOMATIC BRAIN TUMOR SEGMENTATION ON MULTI-MODAL MRI IMAGES	119
<i>Adriano Pinto, Sérgio Pereira, Hugo Dinis and Carlos A. Silva; Deolinda M. L. D. Rasteiro</i>	
A Serious Game for Rehabilitation of Neurological Disabilities: Preliminary Study	125
<i>Tiago Martins; Vítor Carvalho; Filomena Soares</i>	
Characterization of silicon photodiodes for diffuse reflectance signal extraction	131
<i>S. Pimenta; J. P. Carmo; R. G. Correia; G. Minas; E. M. S. Castanheira</i>	
Wireless Multi-Physiological Signal Monitor for Clinical Discharge and Readmissions Criteria Setting and Ambulatory Usage	135
<i>Tiago Marçal; Bruno Antunes; Requicha Ferreira; Carlos Correia; Diana Pires; Ana Matos; João Nuno Simões</i>	
Evaluation of Material Model Parameters of Vaginal Tissue with Different Fiber Orientation	141
<i>Rita Martins; Pedro Martins; Teresa Mascarenhas; Renato Natal Jorge</i>	
Effect of Surgical Mesh Implant in the Uterine Prolapse Correction	147
<i>Paulo Rocha; Marco Parente; Teresa Mascarenhas; António Fernandes; Renato Natal Jorge</i>	
PROTOTYPE FOR DETERMINATION OF PRE- TRANSFUSION TESTS BASED ON IMAGE PROCESSING TECHNIQUES	151
<i>Ferraz, Ana; Machado, José; Carvalho, Vítor</i>	
Patterned CNT-PDMS nanocomposites for flexible pressure sensors	157
<i>P.J. Sousa; L.R. Silva; L. M. Goncalves; G. Minas</i>	
MECHATRONIC SYSTEM FOR ASSISTANCE ON BATH OF BEDRIDDEN ELDERLY PEOPLE	161
<i>Karolina Bezerra; José M. Machado; Bruno Silva; Vítor Carvalho; Filomena Soares; Demétrio Matos</i>	
PDMS biofunctionalization study for the development of a microfluidic device: application to salivary cortisol	165
<i>V.C. Pinto; G. Minas; M. Correia-Neves</i>	
Optimization of Sitting Posture Classification Based on User Identification	171
<i>Bruno Ribeiro , Leonardo Martins , Hugo Pereira , Rui Almeida , Cláudia Quaresma , Adelaide Ferreira , Pedro Vieira</i>	
‘miSimBa’ – A Simulator of Synthetic Time-Lapsed Microscopy Images of Bacterial Cells	177
<i>Leonardo Martins; Andre Ribeiro; José Fonseca</i>	
Long Neuroprobes Based on Silicon Dicing and Iridium Oxide for Electrical Stimulation/Recording	183
<i>M.J. Oliveira; S.B. Gonçalves; A.C. Peixoto; A.F. Silva; J.H. Correia</i>	
Modeling and elastic simulation of auxetic magnesium stents	187
<i>V.H. Carneiro; H. Puga</i>	
Diffusion Kurtosis Imaging: Monte Carlo simulation of diffusion Processes using Crowdprocess	191
<i>David Naves Sousa; Hugo Alexandre Ferreira</i>	
Application of a Modified Hilbert-Huang Transform To Autonomic Evaluation In Metabolic Syndrome	195
<i>Nataniel Goncalves-Rosa , Cristiano Tavares , Vera Gerales , Catarina Nunes-da-Silva , Isabel Rocha</i>	
Towards an RFID Microsystem for Surgical Instrument Detection Using Millimeter Waves	201
<i>Manuel Zamith; Paulo Mendes</i>	
WAVELET ANALYSIS OF HRV DURING MICROGRAVITY SIMULATION	205
<i>Rui Garcês; Mafalda Carvalho; Cristiano Tavares; Thais Russomano; Isabel Rocha</i>	
Performance Assessment Of Wireless Power Transfer Links For Implantable Microsystems	209
<i>Hugo Dinis, Paulo Mendes</i>	

Using An Inverse Method for Optimizing the Material Constants of The Mooney-Rivlin Constitutive Model	213
<i>Elisabete Silva; Marco Parente; Renato Natal Jorge; Teresa Mascarenhas</i>	
Reliability of a wearable system to evaluate ambulatory autonomic activity	217
<i>Cristiano Tavares; Vera Geraldes; Stephane Bastier; Anne Pavy Le-Traon; Isabel Rocha</i>	
Correlation Study Between Blood Pressure And Pulse Transit Time	221
<i>Tânia Pereira; Rui Sanches; Pedro Reis; José Pêgo; Ricardo Simões</i>	
A structural damage model for pelvic floor muscles	227
<i>Dulce Oliveira; Marco Parente; Begoña Calvo; Teresa Mascarenhas; Renato Natal Jorge</i>	
A DISCONTINUOUS GALERKIN SCHEME FOR SOLVING 2D WAVE PROPAGATIONS IN ANISOTROPIC MATERIALS	231
<i>Aderito Araújo , Sílvia Barbeiro , Maryam Khaksar Ghalati</i>	
Image-Derived Input Function for Brain PET Quantification	235
<i>André Gorgulho , Miguel Patrício</i>	
Comparison between the dynamic and initial creep response of porcine and human lumbar intervertebral discs	241
<i>A.R.G Araújo , N. Peixinho , A.C.M. Pinho , J.C.P. Claro</i>	
Maxwell's Equations based 3D model of Light Scattering in the Retina	247
<i>Miriam Santos , Adérito Araújo , Sílvia Barbeiro , Francisco Caramelo , António Correia , Maria Isabel Marques , Miguel Morgado , Luís Pinto , Pedro Serranho , Rui Bernardes</i>	
Development of a Tool for Automatic Classification of Intratumoral Heterogeneity of Lung Cancers Based on PET/CT Intensity Values	253
<i>Carlos Pereira , Célia Gomes , Francisco Caramelo</i>	
PDMS encasing system for integrated lab-on-chip Ag/AgCl reference electrodes	259
<i>T.S. Monteiro , L.M. Gonçalves , G. Minas , S.C. Freitas</i>	
THE NUMERICAL ANALYSIS OF A RESTORED TOOTH USING MESHLESS METHODS	263
<i>Cristina Tavares , Jorge Belinha , Lúcia Dinis , Renato Natal Jorge</i>	
Zinc changes evoked by phenolic compounds and effect on TEA-LTP at hippocampal mossy fiber synapses	269
<i>Fátima C. Bastos , Sandra A. Lopes , Vanessa N. Corceiro , Carlos M. Matias , Paulo J.B. Mendes , Fernando D.S. Sampaio dos Aidos , José C. Dionísio , Rosa M. Quinta-Ferreira , M. Emília Quinta-Ferreira</i>	
Diffusional Kurtosis Imaging using a fast Heuristic Constrained Linear Least Squares Algorithm: a plugin for OsiriX	273
<i>Nuno Mesquita , João Santinha , José Fonseca</i>	
An elasto-plastic model to analyse the biomechanical behaviour of the atherosclerotic plaque tissue	279
<i>Jorge Belinha , Lúcia Dinis , Renato Natal Jorge</i>	
Comparative analysis of near and mid-infrared spectroscopy to monitor recombinant cyprosin production	285
<i>Pedro N. Sampaio , Cecília R.C. Calado</i>	
Molecular fingerprint of human gastric cell line infected by Helicobacter pylori	291
<i>Filipa Rosa , Kevin Sales , Pedro Sampaio , Marta Lopes , Cecília R.C. Calado</i>	
Fuorescence Lifetime Microscope for Corneal Metabolic Imaging	295
<i>Susana F. Silva , Ana Batista , José Paulo Domingues , Maria João Quadrado , Miguel Morgado</i>	
Numerical Simulation of the Maneuvers performed in Vestibular Rehabilitation	301
<i>Carla F. Santos , Fernanda Gentil , Marco Parente , Jorge Belinha , Renato Natal Jorge</i>	

3D Gait Analysis In Rheumatoid Arthritis Postmenopausal Women With And Without Falls History <i>Pedro Aleixo , João M.C.S. Abrantes</i>	305
Footedness influence on Stability measures <i>Tiago Atalaia , João M.C.S. Abrantes</i>	309
The osteointegration numerical prediction of a femur stem using a meshless approach <i>Jorge Belinha , Lúcia Dinis , Renato Natal Jorge</i>	315
 <i>Contributed theses</i>	
3D liver segmentation in Computed Tomography and Positron Emission Tomography exams through Active Surfaces <i>Mendes, Diana; Ferreira, Nuno; Silva, Jose; Caramelo, Francisco</i>	325
Optimization of a Multibody System of the Human Lumbar Spine <i>Sofia Sousa; J.C.P. Claro</i>	331
Robotic Locomotion combining Central Pattern Generators and Reflexes <i>César Ferreira; Cristina P. Santos</i>	337
Computer-Aided Bone Fracture identification based on ultrasound images <i>Luis Nascimento; M. Graça Ruano</i>	343
Spatial monitoring of temperature estimation during ultrasound heating therapy <i>H. Simões Duarte; André Santos; M. Graça Ruano</i>	349
Optimization and Validation of [¹³ N]-NH ₃ Production for Clinical Studies of Positron Emission Tomography in the Evaluation of Myocardial Perfusion <i>Cristina Serra; Ângela Neves; Antero J. Abrunhosa; Luís F. Metello</i>	355
Geometric Sensitivity Analysis of a Lumbar Motion Segment FE Model <i>Ivo M. da Silva; J. C. P. Claro; André P. G. Castro</i>	359
A Medical Device for Support of the Ankle Pathologies Diagnosis <i>R. Ferreira; F. Silva; P.Flores; A. Leal; J. Espregueira-Mendes</i>	365
Simplified multibody model for dynamic loading analysis of the lumbar human spine <i>V. Sousa; J.C.P. Claro</i>	371
An in vitro approach to unravel the modulation of the hypothalamic system by blood-circulating factors <i>JP Martins; CJ Alves; E Neto; DM Moreira; M Xavier; D Sousa; I Alencastre; M Lamghari</i>	377
A Spectrophotometry based blood typing device <i>J. Fernandes; F. O. Soares; G. Minas</i>	383
PLGA nanoparticles for calcitriol delivery <i>M J Ramalho; J A Loureiro; B Gomes; M F Frasco; M A N Coelho; M C Pereira</i>	389
State of the art and challenges in bioprinting technologies, contribution of the 3D bioprinting in Tissue Engineering <i>J. B. L. Fermeiro; M. R. A. Calado; I. J. S. Correia</i>	395
Authors index	403



4th Portuguese BioEngineering Meeting

26-28 February 2015
Faculty of Engineering - University of Porto

Scientific Committee

Adélia Serqueira

Adelino Leite-Moreira

Adriana Tavares

Ana Mafalda Reis

Ana Mendonça

António Completo

António Ramos

António Torres Marques

Arcelina Marques

Augusta Silva

Augusto Faustino

Aurélio Campilho

Cecília Calado

Diamantino Freitas

Elza Fonseca

Eurico Seabra

Fernanda Gentil

Filipe Silva

Filomena Soares

Graça Minas

Helder Araujo

Henrique Almeida

Hugo Proença

Isabel Amaral

Isabel Rocha

João Abrantes

João Paulo Flores

João Paulo Vilas-Boas

João Santos Baptista

João Tavares

João Vilaça

Joaquim Gabriel

Jorge Ambrósio

Jorge Belinha

Jorge Coelho

Jorge Martins

Jorge Salvador Marques

José Alberto Duarte

José Carlos Reis Campos

José Machado da Silva

Leandro Machado

Luis Paulo Reis

Luis Rocha

Luisa Costa Sousa

Marco Parente

Margarida Machado

Maria Helena Figueiral

Mário Vaz

Miguel Castelo-Branco

Miguel Coimbra

Miguel Morgado

Miguel Velhote Correia

Nuno Rocha

Paulo Carvalho

Paulo Gonçalves

Pedro Almeida

Pedro Granja

Pedro Martins

Pedro Moreira

Perpétua Pinto-do-Ó

Raúl Martins

Renato Natal

Ricardo Vardasca

Rubim Santos

Rui Bernardes

Rui Lima

Rui Rúben

Salomé Pinho

Sandra Ventura

Susana Oliveira Branco

Teresa Mascarenhas

Teresa Mendonça

Zhen Ma

Analysis of stresses in drilled composite materials

M.G. Fernandes¹, R. Natal², E.M.M Fonseca³

¹ INEGI, Faculty of Engineering of the University of Porto, Porto, Portugal,

² INEGI, Faculty of Engineering of the University of Porto, Porto, Portugal,

³ LAETA-INEGI / UMNMEE Polytechnic Institute of Bragança, Bragança, Portugal,

¹ mgfernandes@inegi.up.pt

² rnatal@fe.up.pt

³ efonseca@ipb.pt

Abstract— In this study, a three-dimensional dynamic model was built to simulate the drilling process in the composite materials. With an explicit dynamic simulation it is possible to obtain large structural deformation and to apply high intensity loading in a short time frame. Using this methodology, the influence of different cutting parameters were considered during the drilling process in typical composite materials. Also, similar tests were produced in laboratory using composite blocks. Each composite material was instrumented with strain gauges to obtain the strain in different surface positions during the drilling process. The results from the numerical methodology were compared with the experimental methodology. It was concluded when the feed-rate is higher the stresses and strains in the composite material are lower. The obtained numerical and experimental results were similar. Therefore the developed numerical model proved to be a great tool in this kind of analysis.

Index Terms—stresses; bone damage; bone drilling

I. INTRODUCTION

In medicine there are many surgical procedures that involve the bone tissue, often entail cutting, drilling or screwing operations of the bone. The success of these surgeries is dependent of many factors and the bone damage degree generated during the drilling process. Several studies have been published about specific problems that cause bone damage during the drilling process. One of these problems is the cutting effort achieved during the process and is directly related with the drilling parameters, particularly, the drill speed, the feed-rate and the applied force [1]. It is essential to understand and to improve the cutting conditions and all the variables involved to minimize the bone damage. The finite element method has been one of most useful tools for simulate the drilling bone process and evaluate the tissue biomechanics during the drilling [2].

II. EXPERIMENTAL AND NUMERICAL MODEL

In this study, two different methodologies were used to evaluate the damage bone from cutting efforts in drilling process. In the experimental methodology were used strain gauges for obtain the surface stresses in three composite blocks from Sawbones with similar density to the cortical bone. During the experimental tests 18 holes with instrumented strain

gauges (6 holes in each composite block) were produced, (Fig. 1).



Figure 1. Strain gauges application and the drill process.

All holes were made using a conventional drill bit with 4mm of diameter, 30mm of depth and a point angle equal to 118°. The distances between the edge of the drilled hole and the strain gauge were measured, as represented in Fig. 2.

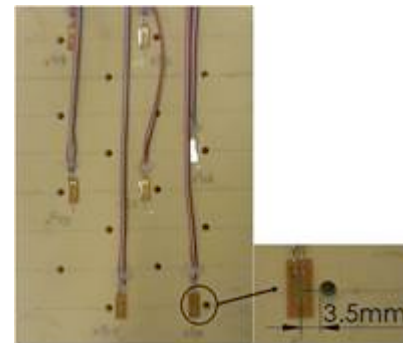


Figure 2. Distance between the edge of the drilled hole and the strain gauge.

The drilling parameters considered in this work are described in Table 1. Three different feed-rates were used, in order to evaluate the influence on the drilling process. All the other parameters were considered as a constant.

Table 1. Drilling parameters.

Parameters	
Drill diameter	4mm
Drill length	30mm
Drill speed (ω)	800rpm
Feed-rate (v_f)	25, 50, 70mm/min

Considering the experimental model, a three-dimensional dynamic numerical model was developed using LS-DYNA to simulate the drilling process. The numerical model uses the Finite Element Method (FEM) for the composite block and the drill bit, considering all variables in the drilling process. The geometry of the drill bit was built in SolidWorks program with same dimensions that drill bit used in the experimental model. The composite block with overall dimensions of 10x14x5mm was modelled as cortical bone specimen, as a part of the test composite material shown in Fig. 3.

Mechanical properties of the cortical bone and the drill bit were considered in this analysis and are summarized in Table 2 [3-6]. The drill bit was modelled as a rigid body in order to reduce the computing time and resources, with high stiffness (220-240 GPa) when compared with the cortical bone equal to 16 GPa [7]. The cortical bone behaviour was simulated using an elastic-plastic material, depending on the strain rate and the failure criterion of the material. The removal of bone during the drilling process was simulated by element deletion that occurs when the plastic strain of an element reached the limit [8]. LS-DYNA provides several criteria for removing elements during a numerical simulation.

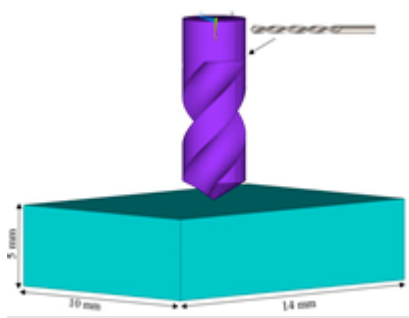


Figure 3. Geometrical configuration of the drill bit and the composite block.

Table 2 Mechanical properties used in FEM analysis.

Properties	Drill bit	Cortical bone
Density (kg/m ³)	7850	800
Young's Modulus (GPa)	200	16.7
Poisson's ratio	0.3	0.3
Yielding Stress (MPa)	—	27
Tangent Modulus (MPa)	—	2083.3
Hardening Parameter	—	0
Cowper-Symonds model		
	C	—
	P	0.13
		0.0001
Failure Plastic Strain	—	0.0021

The numerical model was meshed using *SOLID164* elements (8 nodes with three degrees of freedom at each node in X, Y, Z directions), as show in Fig. 4. This element is used in explicit dynamic analyses only.

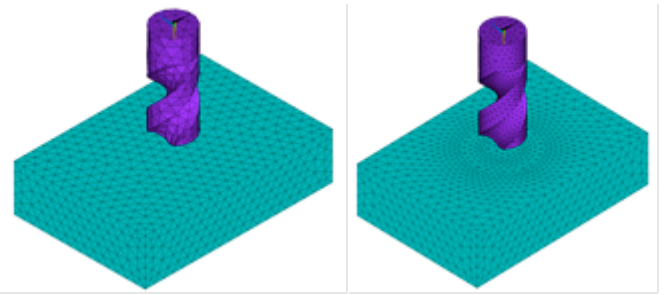


Figure 4. Mesh of drill bit and the composite block used in FEM analysis.

Several mesh convergence study was carried out to obtain a more suitable model for this kind of simulation. A mesh size discretisation of cortical bone was obtained in the vicinity of the drilled place with size equal to 0.5mm for the finite elements edge, and a coarse mesh was used in the block away from the location of the drill bit. The composite block was kept fixed in all vertical faces, while the drill bit was constrained to rotate only about its own longitudinal axis with a specified speed and feed-rate downwards into the composite block. The numerical analysis was performed with the same drilling parameters used in the experimental model as shown in Table 1 and represented in (Fig. 5).

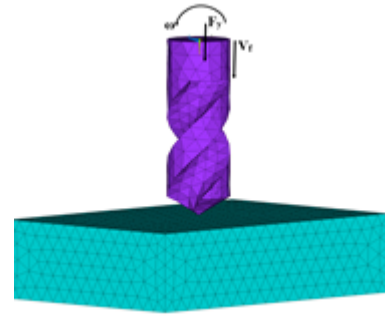


Figure 5. Boundary conditions of the numerical model.

Contact elements were used to simulate the contact between the drill bit and the cortical bone, and defined by the "Eroding" contact algorithm available in LS-DYNA. This algorithm allows one or both outer surfaces suffer damage in contact and continue with the remaining internal elements. The frictional contact between the drill bit and the cortical bone was modelled with a constant coefficient of friction equal to 0.3 [9]. The simulations require on average 72 hours on quad-core i7-4790k with 16 GB RAM.

III. RESULTS AND DISCUSSION

The aim of this work was to investigate the levels of strains and stresses induced in the cortical bone, caused by a cutting tool. Experimental and numerical procedures were used and the results comparison were discussed. The strains were obtained during the drilling depth using strain gauges and the generated normal stresses were calculated at the composite blocks surface. Fig. 6 and 7 show the evolution of stresses obtained in six different holes performed with feed-rates equal to 25, 50 and 75mm/min, during the drill depth.

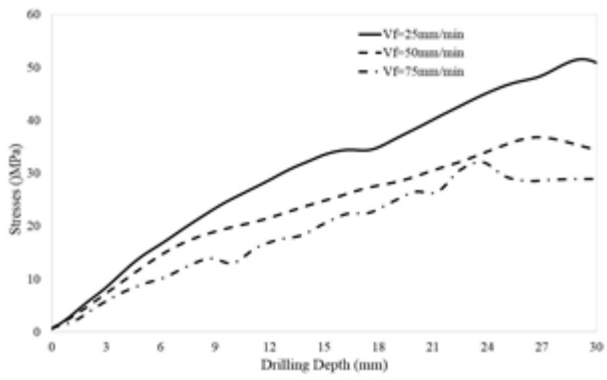


Figure 6. Normal stresses at different feed-rates, hole 1 (H1).

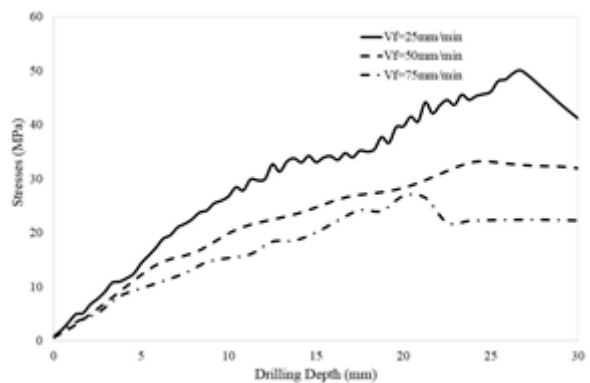


Figure 7. Normal stresses at different feed-rates, hole 2 (H2).

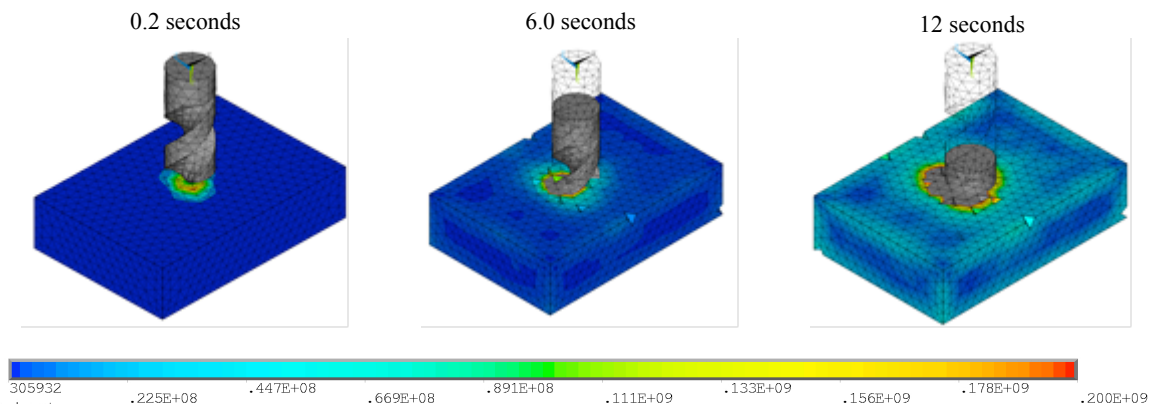


Figure 8. von Mises stresses (Pa) for different time instants ($v_f = 20\text{mm/min}$).

Also in the numerical model, with the progress of drill penetration, the level of von Mises stresses in the bone increases, reaching a maximum value when the drill bit penetrated completely the cortical bone. The level of maximum stress was found in the drilled area and its immediate vicinity.

In order to compare the numerical with experimental results, different nodal positions were considered and the average of the normal stresses were calculated. Table 3 shows the mean of normal stresses located near of each hole obtained experimentally and numerically. The calculated distance

The experimental results show that generated stresses in the bone increase with tool penetration. The greater of the drilled hole depth, produces high stresses values generated in the bone. These results are in agreement with studies performed by Alam et al. [10].

Through of the different feed-rates, it was found that the increase of feed-rate decreases the generated stresses in the bone, as shown in Fig. 6 and 7. The maximum value of the stresses obtained in experimental model was approximately 50MPa at the end of the drilling depth with a feed-rate equal to 25mm/min.

In the numerical model were performed different numerical simulations with different feed-rates (25, 50 and 75mm/min) to compare the stresses results to the experimental method. Fig. 8 represents the levels of von Mises stresses in different stages of drilling until to complete the drilling of the cortical bone. For each feed-rate was considered an adequate time for complete penetration of the cortical bone (5mm).

between the edge of the drilled hole and the strain gauge was also considered in both methodologies.

According the results present in Table 3 it was found that in both methodologies when the feed-rate parameter increases the stresses and strains in the composite materials decreases. It was also found that for the most remote areas of the drilling zone the normal stresses in bone surface are lower. The levels of maximum stresses were found near of the drilled area vicinity, as already observed in the numerical model, Fig. 8. The numerical model was validated using the experimental model, and both methods are in agreement.

Table 3. Normal stresses (MPa) in experimental and numerical models.

Feed-rate (mm/min)	Experimental						Average	Numerical
	H1	H2	H3	H4	H5	H6		
$V_f=25$	14.87 (L=3.5mm)	14.32 (L=4.0mm)	13.77 (L=4.0mm)	11.57 (L=5.5mm)	11.52 (L=5.5mm)	11.09 (L=5.5mm)	12.86	12.88
$V_f=50$	17.90 (L=3.0mm)	16.98 (L=3.0mm)	12.25 (L=3.5mm)	10.70 (L=4.0mm)	8.51 (L=4.5mm)	7.86 (L=5.0mm)	12.37	11.85
$V_f=75$	11.03 (L=3.5mm)	9.07 (L=4.0mm)	8.80 (L=4.0mm)	8.40 (L=4.0mm)	7.48 (L=4.5mm)	7.42 (L=4.5mm)	8.70	8.68

H_i drilled hole number, L distance between the edge of the drilled hole and the strain gauge

IV. CONCLUSIONS

There are several studies in the literature about the influence of the different parameters in bone drilling processes, however there is no clear agreement between different authors. In this study two different methods were used to evaluate the stresses distribution in the cutting region and in vicinity areas, obtained for different drilling parameters. Using different feed-rates it was possible to verify a decrease of stresses and strains in composite materials when the feed-rate is higher. As foreseen, the normal stresses in the far hole regions were lower than near of the hole region.

In this study the three-dimensional finite element model proved to be a great analysis tool to simulate the bone drilling dynamic process, useful to evaluate the performance of surgical tools alternatively to the hard theoretical work. The numerical model should be applied in various cases of drilling, considering different variables and allowing to obtain quickly and accurate results in all involved variables.

ACKNOWLEDGMENT

The author of this paper acknowledges the support of the Project "Biomechanics: Contributions to the healthcare" co-financed by the Regional Operational Programme of North (ON.2 - The New North), the National Strategic Reference Framework (NSRF), through the European Development Fund (ERDF).

REFERENCES

- [1] J. Soriano, A. Garay, P. Aristimunõ, L.M. Iriarte, J.A. Eguren, P.J. Arrazola, "Effects of rotational speed, feed rate and tool type on temperatures and cutting forces when drilling bovine cortical bone", *Machining Science and Technology: An International Journal*, vol. 17, pp. 611-636, 2013.
- [2] L. Qi, X. Wang, M.Q. Meng, "3D Finite Element Modelling and Analysis of Dynamic Force in Bone Drilling for Orthopaedic Surgery", *International Journal for Numerical Methods in Biomedical Engineering*, vol. 30, pp. 845-856, 2014.
- [3] Sawbones-Worldwide Leaders in Orthopaedic and Medical Models, www.sawbones.com/.
- [4] M.G.A. Fernandes, E.M.M. Fonseca, R.M.J. Natal, "*Modelo 3D para análise térmica durante o processo de furação do osso cortical*", Humberto Varum et al. Eds., Book of Abstracts, 9CNME - 9th National Congress of Experimental Mechanics, University of Aveiro, pp.151-152, ISBN: 978-95695-5-3, 2014.
- [5] C.C. Huang, Y.C. Liu, L.W. Chen, Y.C. Chen, "Temperature rise of alveolar bone during dental implant drilling using the finite element simulation", *Life science Journal*, vol. 7, pp. 68-72, 2010.
- [6] Z. Asgharpour, D. Fressmann, E. Schuller, S. Peldschus, "Implementation of a Strain Rate Dependent of Human Bone Model", 8th European LS-DYNA Users Conference, Strasbourg, 2011.
- [7] W.A. Lughmani, K. Bouazza-Marouf, I. Ashcroft, "Drilling in cortical bone: a finite element model and experimental investigations", *Journal of the Mechanical Behaviour of Biomedical Materials*, vol. 42, pp. 32-42, 2014.
- [8] M.G.A. Fernandes, M.A.P. Vaz, R.M.N. Jorge, E.M.M. Fonseca, "*Modelo dinâmico 3D para análise térmica em processos de furação óssea*", Rui B. Ruben et al (Eds), Book of abstracts, 6th National Congress of Biomechanics, Monte Real, Leiria, pp.231-232, ISBN: 978-972-8793-74-6, 2015.
- [9] Y.K. Tu, L.W. Chen, J.S. Ciou, C.K. Hsiao, Y.C. Chen, "Finite Element Simulations of Bone Temperature Rise During Bone Drilling Based on a Bone Analog", *Journal of Medical and Biological Engineering*, vol. 33, pp. 269-274, 2013.
- [10] K. Alam, A.V. Mitrofanov, M. Bäker, V.V Silberschmidt, "Stresses in ultrasonically assisted bone cutting", *Journal of Physics: 7th International Conference on Modern Practice in Stress and Vibration Analysis*, Conference Series 181, 2009.

Authors index

Symbols

A

Abrantes, João M.C.S. 305, 309
Abrunhosa, AJ 63
Abrunhosa, Antero J. 355
Abuimara, Abdellatif 111
Aires-Barros, M.R. 9
Aires-Barros, M. Raquel 87
Aleixo, Pedro 305
Alencastre, I 377
Almeida, M. Catarina M. D de 49
Almeida, Rui 171
Alves, CJ 377
Alves, Francisco 45
Alves, Raquel S. 47
Amorim, Lúcia 65
Andrade, Stephanie 79
Antunes, Bruno 135
Antunes, Luis 27
Araujo, Aderito 231
Araújo, Adérito 53, 247
Araújo, A.R.G. 241
Archinti, Marco 87
Areias, B. 29
Atalaia, Tiago 309
Azevedo, A.M. 9
Azevedo, Ana M. 87

B

Baptista, A.M. 9
Baptista, Sónia 107
Barbeiro, Silvia 231
Barbeiro, Sílvia 53, 247
Barros, Dragana P.C. de 9, 23
Barroso, Maria 93
Bastier, Stephane 217
Bastos, Fátima C. 51, 57, 269
Batista, Ana 295
Belinha, J. 31
Belinha, Jorge 263, 279, 301, 315
Bernardes, Rui 53, 247
Bezerra, Karolina 161
Bicho, D. 7

Blanco, A 63
Borges, João Paulo 25
Borlinhas, Filipa 41
Botelho, Maria Filomena 35
Branco, Tiago 35
Brandão, Sofia 19, 41

C

Calado, Cecília R.C. 61, 285, 291
Calado, M. R. A. 395
Calvo, Begoña 227
Campos, Sara R.R. 9
Caramelo, Francisco 35, 53, 247, 253, 325
Caramlo-Nunes, C. 7
Carmo, J. P. 131
Carneiro, V.H. 187
Carvalho, Mafalda 205
Carvalho, Vítor 151, 161
Carvalho, Vítor 125
Castanheira, E. M. S. 131
Castelo-Branco, Miguel 107
Castro, André P. G. 359
Cesário, M. Teresa 49
Claro, J. C. P. 359
Claro, J.C.P 331
Claro, J.C.P. 241, 371
Coelho, M A N 389
Coelho, Manuel A. N. 79
Coimbra, A. Paulo 3, 11, 15
Corceiro, Vanessa N. 57, 269
Correia, António 53, 247
Correia, Carlos 59, 135
Correia, I. J. S. 395
Correia, J.H. 183
Correia, Marta 43
Correia-Neves, M. 165
Correia, R. G. 131
Correia, Rui 27
Costa, Durval Campos 47
Couceiro, M 63
Couto, Mafalda 69
Crespo, P 63
Crespo, Paulo 39, 51, 55
Crisóstomo, Manuel 3, 11, 15
Cruz, Carla 65
Cruz, Stephane 3, 11, 15
Cunha, Bernardo 61

D

Da Roza, Thuane 19

Dinis, Hugo 119, 209

Dinis, Lúcia 263, 279, 315

Dionísio, José C. 57, 269

Domingues, José Paulo 295

Duarte, H. Simões 349

Duarte, José Alberto 19

E

Espregueira-Mendes, J. 365

F

Faria, Diogo Borges 47

Ferreiro, J. B. L. 395

Fernandes, A.A. 29, 31

Fernandes, A. Augusto 93

Fernandes, António 147

Fernandes, J. 383

Fernandes, M.G. 83

Ferraz, Ana 151

Ferreira, Adelaide 171

Ferreira, Antónia Maura A. 51

Ferreira, Bruno S. 49

Ferreira, César 337

Ferreira, Hugo 43

Ferreira, Hugo A. 41

Ferreira, Hugo Alexandre 37, 191

Ferreira, João P. 3, 11, 15

Ferreira, Nuno 325

Ferreira, Paulo 3, 11, 15

Ferreira, R. 365

Ferreira, Requicha 135

Figueiredo, Joana 97

Flores, P. 365

Fonseca, E.M.M. 83

Fonseca, José 21, 177, 273

Fonseca, Luis P. 17, 23

Fonseca, M. Manuela R. da 49

Fonte, P 63

Frasco, M F 389

Freitas, S.C. 259

G

Gabriel, Joaquim 13, 27

Garcês, Rui 205

Garcia, Filipa 3

Gentil, F. 29

Gentil, Fernanda 301

Geraldes, Vera 195, 217

Ghalati, Maryam Khaksar 231

Gomes, B 389

Gomes, Célia 253

Goncalves, L. M. 157

Gonçalves, L.M. 259

Gonçalves, Nádia 21

Goncalves-Rosa, Nataniel 195

Gonçalves, S.B. 183

Gordo, PM 63

Gorgulho, André 235

Guerra Liberal, Francisco 73

H

Henriques, Célia 25

I

J

Jacinto, Maria João 87

K

Kajetanowicz, M 63

Keulen, Frederik van 49

Korcyl, G 63

L

Lamghari, M 377

Leal, A. 365

Le-Traon, Anne Pavy 217

Lipovský, Rastislav 37

Lopes, Clara A. 23

Lopes, L 63

Lopes, Marta 291

Lopes, Sandra A. 57, 269

Loução, Ricardo 43

Loureiro, J A 389

Loureiro, Joana 41

Loureiro, Joana A. 79

M

Machado, José 151

Machado, José M. 161

Machado, Margarida 67, 69

Manuel R. S. Tavares, João 73

Marçal, Tiago 135

Mar, Pedro do 59

Marques, M. 31

Marques, Maria Isabel 53, 247

Marques, MFF 63

Marques, RF 63
 Martins, JP 377
 Martins, Leonardo 171, 177
 Martins, P 63
 Martins, Pedro 93, 141
 Martins, Rita 141
 Martins, Tiago 125
 Marzábal, Pau 87
 Mascarenhas, Teresa 19, 103, 141, 147, 213, 227
 Masteling, Mariana 103
 Matias, Carlos M. 57, 269
 Matias, Ricardo 33
 Matos, Ana 135
 Matos, Demétrio 161
 Mendes, Diana 325
 Mendes, Joaquim Gabriel 115
 Mendes, Paulo 201, 209
 Mendes, Paulo J.B. 51, 57, 269
 Mesquita, Nuno 273
 Metello, Luís F. 355
 Michel, J 63
 Minas, G. 131, 157, 165, 259, 383
 Miranda, Pedro Cavaleiro 55
 Monteiro, T.S. 259
 Mora, André D. 21
 Morais, Ricardo 107
 Moreira, DM 377
 Moreno, Juan C. 97
 Morgado, Miguel 53, 247, 295
 N
 Nascimento, Luis 343
 Natal Jorge, Renato 141, 147, 213, 227, 263, 279, 301, 315
 Natal Jorge, R. M. 19
 Natal Jorge, R.M. 29, 31, 83, 103
 Neto, E 377
 Neto-Henriques, Rafael 43
 Neto, Rui 67, 69
 Neves, Ângela 355
 Nogueira, Luísa 41
 Nunes, Ana Teresa 45
 Nunes-da-Silva, Catarina 195
 Nunes, Rita G. 41, 43
 O
 Oliveira, A.F. 31
 Oliveira, Dulce 227
 Oliveira, João 107
 Oliveira, M.J. 183
 P
 Palka, M 63
 Parente, M. 31
 Parente, Marco 147, 213, 227, 301
 Parente, M.P.L. 29
 Patricio, Miguel 45
 Patrício, Miguel 35, 235
 Pêgo, José 221
 Peixinho, N. 241
 Peixoto, A.C. 183
 Pereira, Ana 27
 Pereira, Carlos 253
 Pereira, Helena Catarina 59
 Pereira, Hugo 171
 Pereira, João 107
 Pereira, Maria do Carmo 79
 Pereira, M C 389
 Pereira, Sérgio 119
 Pereira, Tânia 221
 Peres, Gisele L. 17
 Pfluck, Ana C.D. 23
 Pimenta, S. 131
 Pinho, A.C.M. 241
 Pinto, Adriano 119
 Pinto, Luís 53, 247
 Pinto, V.C. 165
 Pires, Diana 135
 Pombo, Cátia 115
 Puga, H. 187
 Puga, Helder 115
 Q
 Quadrado, Maria João 295
 Quaresma, Cláudia 171
 Queiroz, J.A. 7
 Queiroz, João 65
 Quinta-Ferreira, M. Emília 51, 57, 269
 Quinta-Ferreira, Rosa M. 57, 269
 R
 Rajasekaran, Sanguthevar 5
 Ramalho, M J 389
 Ramião, Nilza 93

Ramos, Isabel 19, 41
 Raposo, Rodrigo 49
 Rasteiro, Deolinda M. L. D. 119
 Reis, Pedro 221
 Ribeiro, Andre 177
 Ribeiro, Andre S. 21
 Ribeiro, Andresa C. 17
 Ribeiro, Bruno 171
 Rocha, Isabel 195, 205, 217
 Rocha, Paulo 147
 Rosa, Filipa 291
 Rosa, Joana 33
 Ruano, M. Graça 343, 349
 Russomano, Thais 205
S
 Sales, Kevin 291
 Salvador, Ricardo 55
 Sampaio dos Aidos, Fernando D.S. 57, 269
 Sampaio, Pedro 291
 Sampaio, Pedro N. 61, 285
 Sanches, Rui 221
 Santinha, João 21, 273
 Santos, André 349
 Santos, B.F. 7
 Santos, Carla F. 301
 Santos, Cristina P. 337
 Santos, Cristina P. 97
 Santos, Diana 93
 Santos, Miriam 53, 247
 Santos, Nuno Saraiva 51, 55
 Seabra, Eurico 115
 Serra, Cristina 355
 Serranho, Pedro 53, 247
 Setas, Sara 115
 Silva, A.F. 183
 Silva, Bruno 161
 Silva; Carlos A. 119
 Silva, Elisabete 213
 Silva, F. 365
 Silva, Hugo 33
 Silva, Ivo M. da 359
 Silva, Jose 325
 Silva, L.R. 157
 Silva, Luís F. 115
 Silva, Susana F. 295
 Silveira, Nádyá P. da 17
 Silvestre, João 55
 Simões, Hugo 39
 Simões, João Nuno 135
 Simões, Ricardo 221
 Soares, Filomena 125, 161
 Soares, F. O. 383
 Soares, Rosane M. D. 17
 Sobral, Heloísa 11, 15
 Song, Nannan 67
 Sousa, A. 7
 Sousa, Ângela 65
 Sousa, D 377
 Sousa, David Naves 191
 Sousa, F. 7
 Sousa, Fani 65
 Sousa, P.J. 157
 Sousa, Sofia 331
 Sousa, Sónia C.P. 51, 55
 Sousa, V. 371
T
 Tavares, Adriana 73
 Tavares, Cristiano 195, 205, 217
 Tavares, Cristina 263
 Tavares, João Manuel R. S. 47
 Tomaz, C.T. 7
 Traxler, M 63
 Trincă, Dragoş 5
U
V
 Vardasca, Ricardo 13
 Vieira, Alexandra 11, 15
 Vieira, Pedro 171
 Vieira, Tânia 25
 Vilaça, J.M. 31
W
 Wu, Shenghua 67
X
 Xavier, M 377
Y
Z
 Zamith, Manuel 201