

IRF2018

Proceedings of the 6th International Conference on **INTEGRITY-RELIABILITY-FAILURE**

(Lisbon/Portugal, 22-26 July 2018)

Editors

J.F. Silva Gomes and Shaker A. Meguid

FEUP INEGI
(2018)

IRF2018

**Proceedings of the
6th International Conference on
INTEGRITY-RELIABILITY-FAILURE
(Lisbon/Portugal, 22-26 July 2018)**

IRF2018

**Proceedings of the
6th International Conference on
INTEGRITY-RELIABILITY-FAILURE
(Lisbon/Portugal, 22-26 July 2018)**

Editors

J.F. Silva Gomes and Shaker A. Meguid

**FEUP-INEGI
(2018)**

Published by

INEGI-Instituto de Ciência e Inovação em Engenharia Mecânica e Gestão Industrial
Rua Dr Roberto Frias, 4200-465 Porto - Portugal
Telefone: +351 22 9578710; Email: inegi@inegi.up.pt
<http://www.inegi.up.pt/>

July, 2018

ISBN: 978-989-20-8313-1

All rights reserved. No part of this publication may be reproduced, stored in a retrieval system, or transmitted in any form or by any means, electronic, mechanical, optical, recording, or otherwise, without the prior written permission of the Editors

TABLE OF CONTENTS

Preface	xxiii
International Scientific Committee	xxiv
Organizing Committee and Secretariat	xxv
Acknowledgments	xxvi
List of Tracks and Symposia	xxvii

INVITED KEYNOTE PAPERS 1

7001	STRATEGIES FOR IMPROVED VEHICLE SAFETY: SURVIVABILITY OF OCCUPANTS. Shaker A. Meguid, Mohamed T.Z. Hassan.	3
7002	ENHANCEMENT OF FATIGUE LIFE AND ELONGATION OF METALLIC MATERIALS BY HIGH-DENSITY PULSED ELECTRIC-CURRENT. Yang Ju.	5
7003	SAFETY IN SPORTS: CHALLENGES AND OPPORTUNITIES. Veit Senner.	7

CONFERENCE MAIN TOPICS 9

TOPIC-A: COMPOSITE AND ADVANCED MATERIALS 11

7096	THE IMPACT OF METAL REINFORCEMENT UPON THE PROPERTIES OF A COMPOSITE. Robert Szczepaniak, Pawel Przybylek, Aneta Krzyzak, Michal Mikolajewski, Andrzej Komorek.	13
7097	INVESTIGATION INTO THE THERMAL RESISTANCE OF A POLYMER COMPOSITE WITH AEROGEL. Robert Szczepaniak, Pawel Przybylek, Arkadiusz Bartuzi.	23
7110	MECHANICAL PROPERTIES OF NiAl-TiB ₂ COMPOSITE MATERIALS. Masashi Yoshida.	31
7123	EFFECTS OF ACCELERATED AGEING ON THE TENSILE PERFORMANCE OF GFRP/EPOXY COMPOSITE AND THERMOSET EPOXY. Silviu Ivan, Matteo Cavasin, Stefanos Giannis, Ivo Dlouhy, Barry Thomson.	41
7129	SOME QUASI-ISOTROPIC LAMINATES ARE MORE ISOTROPIC THAN OTHERS. Mazen A. Albazzan, Ramy Harik, Zafer Gürdal, Jesse Hartzell.	43
7135	THERMO-PROTECTIVE PROPERTIES OF POLYMER COMPOSITES WITH NANO-TITANIUM DIOXIDE. Sylwester Stawarz, Natalia Bryła, Wojciech Kucharczyk, Mohamed Bakar, Magdalena Stawarz.	57
7137	THE MECHANICAL AND THERMAL BEHAVIOR OF EXPONENTIALLY GRADED SANDWICH PLATES IN BENDING TEST. Dongdong Li, Zongbai Deng, Shang-Chao Hung, Nai-Jen Cheng.	75
7150	NUMERICAL ANALYSIS OF A COMPOSITE LEG PROSTHESIS. João V.G. Santos, Vincent Wong, Vicente G. Neto, Luis C. Paschoarelli, Marcos A.R. Pereira, Carlos A. Fortulan, Cesar R. Foschini.	77

7186	MATERIAL CHARACTERISTICS OF GEOPOLYMERS BASED ON AN INDUSTRIAL WASTE PRODUCT. Jan Fořt, Eva Vejmelková, Zdeněk Soukup, Pavla Rovnaníková, Robert Černý.	85
7221	SURFACE MODIFICATION OF POLYSTYRENE BEADS WITH SULFONAMIDE DERIVATIVES AND APPLICATION TO WATER SOFTENING SYSTEM. Seong Ik Jeon, Cheol-Hee Ahn.	93
7228	MECHANICAL PROPERTIES AND MICROSTRUCTURE OF CARBON-FIBRE/ALUMINIUM-MATRIX AND CARBON-FIBRE/TITANIUM-MATRIX COMPOSITES. Alexander Rudnev, Rida Gallyamova, Andrew Gomzin, Andrew Kolchin, Sergei Galyshev, Fanil Musin, Sergei Mileiko.	95
7229	APPLICATION OF ZEOLITE IN CONCRETE MIXTURES FOR RADIONUCLIDE BARRIERS. Eva Vejmelková, Martin Keppert, Petr Bezdička, Robert Černý.	97
7238	DAMPING PROPERTIES OF CORK/FIBRE REINFORCED POLYMER COMPOSITES. Ali Daliri, Tahsin Anowar, José Silva.	101
7244	SILICATE-BASED FIBRES TO REINFORCE HIGH TEMPERATURE COMPOSITES. Sergei Mileiko, Andrew Kolchin, Natalia Novokhatskaya, Nelly Prokopenko, Olga Shakhlevich, Vladimir Chumichev, Sergei Abashkin. <i>(Invited Paper)</i> .	103
7251	EFFECT OF HOSTILE SOLUTIONS ON THE VISCOELASTIC BEHAVIOUR OF CARBON/EPOXY LAMINATES. M. Kamocka, Ana M. Amaro, Paulo N.B. Reis, Maria A. Neto, José Maria Cirne.	105
7254	THERMAL AND MECHANICAL ANALYSIS OF AN EPOXY FOAM SYNTHESIZED BY MEANS OF A CHEMICAL FOAMING AGENT. Matteo Cavasin, Marco Sangermano, Milena Salvo, Stefanos Giannis.	107
7277	ISOLATING VIBRATION BY PERIODIC COMPOSITE STRUCTURES. Hongping Hu, Yuantai Hu.	109
7291	SELF-ACTUATED MORPHING COMPOSITE WITH TUNABLE FREQUENCY AND DAMPING. Arnaldo Casalotti, Giulia Lanzara.	111
TOPIC-B: COMPUTATIONAL MECHANICS		123
7084	CLUSTERING OF TRIBOLOGICAL FAULTS USING THE WARD METHOD. Antonio P.V. Pinto, Carlos E.F. Bezerra, Andreyvis S. Souza, Marco A.L. Cabral, Efrain P. Matamoros.	125
7098	MATHEMATICAL MODELING OF THE BLENDED WING BODY AIRCRAFT FLOW-OVER IN CRUISE MODE. Francheska Slobodkina.	135
7105	TIME-HARMONIC ANALYSIS OF LINEAR ANISOTROPIC ELASTIC SOLIDS WITH A BOUNDARY ELEMENT METHOD. Leonid Igumnov, Ivan Markov, Igor Vorobtsov, Mikhail Grigoryev.	139
7119	THREE-DIMENSIONAL DYNAMIC ANALYSIS OF A THREE-PHASE POROELASTIC MEDIUM USING THE TIME-DOMAIN BOUNDARY ELEMENT METHOD. Andrey Petrov, Leonid Igumnov, Igor Vorobtsov, Aleksandr Belov.	141
7120	NUMERICAL SOLUTION FOR A TRANSIENT PROBLEM OF A SANDSTONE LAYER ON A SOIL FOUNDATION UNDER VERTICAL LOAD USING BEM. Svetlana Litvinchuk, Akeksandr Ipatov, Aleksandr Boev.	143

7207	STRUCTURAL INTEGRITY ASSESSMENT OF CRACKED COMPOSITE PLATE UNDER AEROELASTIC LOADING BY MEANS OF XFEM. Nur Azam Abdullah, Jose L. Curiel Sosa, Nanda Wirawan, Mahesa Akbar.	145
7208	AEROFRACTURELASTIC ON WING BOX OF MULTI-PURPOSE COMMUTER AIRCRAFT UNDER GUST LOAD BY MEANS OF XFEM. Nur Azam Abdullah, Nanda Wirawan, Jose L. Curiel Sosa, Mahesa Akbar.	153
7215	ASYMPTOTIC STOKES FLOWS USING AXIAL GREEN FUNCTION METHOD WITH REFINEMENT. Junhong Jo, Hong-Kyu Kim, Do Wan Kim.	159
7219	ANALYSIS OF THE COLD FORMING PROCESS. Sigitas Kilikevičius, Ramūnas Česnavičius, Povilas Krasauskas, Andrius Juodsnukis.	161
7223	NUMERICAL AND EXPERIMENTAL ANALYSIS OF AERONAUTICAL CFRP COMPONENTS SUBJECTED TO STRUCTURAL LOADS. Alessandro Castriota, Vito Dattoma, Riccardo Nobile, Francesco Panella, Alessandra Pirinu, Andrea Saponaro.	165
7232	NEW APPROACH TO SOLVING MATHEMATICAL EQUATION FOR DAMPED OSCILLATIONS BY SLIDING (COULOMB) FRICTION AT THE KARAKURI MECHANISM. Tomas Riegr, Ivan Masin.	177
7246	SIMULATION OF A VIBRATORY SYSTEM WITH SHAPE MEMORY ALLOY UNDER ROTATING UNBALANCE EXCITATION. Michel A. Silva, Vinicius Piccirillo, Carlos A. Andrade.	179
7307	FROM PERCOLATION OF FRACTURED MEDIA TO SEISMIC ATTENUATION: A NUMERICAL STUDY. Mikhail Novikov, Vadim Lisitsa.	181
TOPIC-C: EXPERIMENTAL MECHANICS AND INSTRUMENTATION		189
7052	DETERMINATION OF BURST PRESSURE FOR DEFECTED PIPES. Abdullah M. Al Shabibi, Majid Al Moharbi, Sultan Al Owaisi.	191
7060	MECHANICAL BEHAVIOR OF NEW POLYUREA ELASTOMERS: CONSTITUTIVE MODELLING. Nahuela Rull, Antoni Sanchez-Ferrer, M. Patricia Frontini.	193
7101	FATIGUE STRENGTH OF CARBON STEEL COVERED WITH PROTECTIVE LAYERS FOR CO ₂ ASSISTED SHALE GAS MINING. Marta Baran, Tomasz Brynk, Z. Pakielka.	195
7111	RESIDUAL STRESSES - NEUTRON DIFFRACTOMETER STRESS-SPEC @ FRM II. Joana Rebelo Kornmeier, Michael Hofmann, Weimin M. Gan, Jens Gibmeier, Jan Saroun.	205
7152	COMPARATIVE STUDY ON ACCELERATED FLUID DIFFUSION IN THERMOSET EPOXY AND GFRP FOR MARINE APPLICATIONS. Matteo Cavasin, Silviu Ivan, Stefanos Giannis, Marco Sangermano, Milena Salvo, Barry Thomson.	207
7156	CONDITION MONITORING OF AN INDUSTRIAL BUCKET ELEVATOR FOR BULK MATERIALS. Piotr Sokolski, Marek Sokolski.	209
7163	DIAGNOSIS OF BEARING FAULTS IN COMPLEX MACHINERY USING SPATIAL DISTRIBUTION OF SENSORS AND FOURIER TRANSFORMS. Aouni Lakis, Ali Mahvash, Mohammad Toorani.	217
7176	MECHANICAL PROPERTIES OF HYDROGELS AND AUTOMATED SYSTEM "KERN-DP". Anatoliy P. Onanko, M.P. Kulish, Y.A. Onanko, S.A. Vyzhva, D.V. Charnyi, O.P. Dmitrenko, A.V. Shabatura, R.V. Homenko, A.N. Onischenko, T.O. Busko.	225

7182	EDDY CURRENT APPROACH FOR METALLURGICALLY CLAD PIPE INSPECTION. Cesar G. Camerini, João M.A. Rebello, Rafael W. Santos, João M. Santos, Gabriela R. Pereira.	227
7197	ADVANCED NDT PROCEDURES AND THERMAL DATA PROCESSING ON CFRP AERONAUTICAL COMPONENTS. Vito Dattoma, Riccardo Nobile, Francesco Panella, Alessandra Pirinu, Andrea Saponaro.	229
7220	STRENGTH AND MICROSTRUCTURE ANALYSIS OF SPOT WELDED JOINTS. Ramūnas Česnavičius, Sigítas Kilikevičius, Povilas Krasauskas, Vytautas Jurgaitis.	243
7222	DETERMINATION OF ALUMINUM ALLOY EN AW-1100 LIMITING DRAWING RATIO AT DIFFERENT TEMPERATURES THROUGH PRACTICAL EXPERIMENTS AND NUMERICAL SIMULATION USING FINITE ELEMENT METHOD. Gilmar C. Silva, Matheus M. Costa, João P.S. Carneiro, Jorge A.P. Rodrigues, José F.P. Vasconcelos, Daniel C. Maciel, Tiago A. Silva.	247
7224	MAGNETIC CHARACTERIZATION OF HEAT-RESISTANT AUSTENITIC STEELS BY USING AN OWN EDDY CURRENT SYSTEM. Mónica P. Arenas, Clara J. Pachecho, Artur L. Ribeiro, Helena G. Ramos, Carlos B. Eckstein, Laudemiro Nogueira Jr., Luiz H. Almeida, João M.A. Rebello, Gabriela R. Pereira.	255
7266	ANALYSIS OF HIGH TEMPERATURE PIPE INTEGRITY USING CUSTOMIZED EDDY-CURRENT SYSTEM. Fernando S. Crivellaro, Ana Peixoto, Miguel A. Machado, José P. Sousa, António Custódio, J. Pamies Teixeira, Telmo G. Santos.	257
TOPIC-D: FATIGUE AND FRACTURE MECHANICS		263
7074	FRACTURE MECHANICS ANALYSIS OF POROSITY EFFECT ON STRENGTH CHARACTERISTICS OF POROUS ALUMINA. Natsumi Miyazaki, Toshihiko Hoshide.	265
7080	CREEP FRACTURE OF PLATES IN UNSTEADY COMPLEX STRESS STATE IN THE PRESENCE OF AMBIENT MEDIUM. Alexander Lokoshchenko, Leonid Fomin.	277
7089	INVESTIGATION OF FATIGUE PROPERTIES OF SOME STEAM TURBINE BLADE MATERIALS. Jan Chvojan, Jaroslav Václavík.	279
7092	NEW CORROSION MODEL TO PREDICT STEEL STRENGTH. Rachid Dami.	281
7102	STUDY OF THE EFFECT OF STRESS CONCENTRATORS IN FATIGUE FAILURE ANALYSIS OF A CRANKSHAFT. José R.G. Carneiro, Leonardo C. Aguiar, Gilmar C. Silva, João P.S. Carneiro .	283
7166	THE EFFECT OF FRESH WATER CORROSIVE SOLUTION ON FATIGUE STRENGTH OF LOW CARBON STEEL. Marta Morgantini, Volodymyr Okorokov, Yevgen Gorash, Donald MacKenzie, Ralph van Rijswijk.	289
7172	APPROACH TO FULL-SCALE FATIGUE TEST OF THE MIG-29 VERTICAL STABILIZER WITH REPAIR OF COMPOSITE STRUCTURES. Piotr Synaszko, Michał Sałaciński, Michał Dziendzikowski, Krzysztof Dragan, Andrzej Leski.	297
7230	PERIDYNAMIC MECHANO-CHEMICAL MODELING OF STRESS CORROSION CRACKING. Ziguang Chen, Siavash Jafarzadeh, Shumin Li, Florin Bobaru, Qin Qian.	299
7233	STRENGTH AND LIFE ANALYSIS IN THE PLASTIC STRAIN RANGE. NEUBER VERSUS STRAIN ENERGY CONSERVATION PRINCIPLE. Luciano Brambilla.	301

7240	ADVANCED NUMERICAL TECHNIQUES APPLIED TO THE STRENGTH PREDICTION OF STEPPED-LAP ADHESIVE JOINTS. Rui Machado, Raúl Campilho.	311
7241	MIXED-MODE FRACTURE OF BONDED JOINTS USING THE ASYMMETRIC TAPERED DOUBLE-CANTILEVER BEAM TEST. Filipe Nunes, Raúl Campilho.	313
7264	REAR SUSPENSION DEVELOPMENT: DURABILITY STUDY ON THE EFFECTS OF VARIATION OF VEHICLE AND SUSPENSION CHARACTERISTICS IN A TWIST BEAM REAR SUSPENSION. Guilherme Carneiro, Marco Anjos, Ernani S. Palma.	315
7292	COUPLED METHOD TO INVESTIGATE PLASTIFICATION OF HEAVY HAUL RAILWAY WHEELS. Pedro Picanço, Felipe Bertelli, Eduardo A. Lima, Thairon R. Costa, Auteliano A. Santos.	317
TOPIC-E: NANOTECHNOLOGIES AND NANOMATERIALS		325
7081	EFFICIENT FABRICATION METHOD OF METALLIC NANO/MICRO STRUCTURES FOR NANO DEVICES. Masahiko Yoshino, P. Potejanasak, Duc P. Truong, Motoki Terano.	327
7109	NANOINDENTATION INDUCED PLASTIC DEFORMATION IN NANOCRYSTALLINE ZrN COATING. Zhoucheng Wang.	329
7149	ALUMINA DOPING FOR IMPROVING PROPERTIES OF ZIRCONIA CERAMICS. Danil Belichko, Larysa Loladze, Tetyana Konstantinova, Alexandr Myloslavskyy.	331
7151	NEW CHALLENGES IN THE CREATION OF RELIABLE CERAMIC NANOCOMPOSITES. Igor A. Danilenko, Tetyana E. Konstantinova, Oxana A. Gorban, Irina I. Brukhanova, Larysa V. Loladze, Danil R. Belichko, Artyom V. Shylo.	333
7269	ZINC OXIDE MATERIAL FOR OPTOELECTRONIC APPLICATIONS. Irinela Chilibon.	335
7290	CARBON NANOTUBES BASED SENSORS FOR DAMAGE DETECTION. Erika Magnifico, Arnaldo Casalotti, Maryam Karimzadeh, Krishna C. Chinnan, Giulia Lanzara.	337
7296	IMPROVEMENT OF ADHESION STRENGTH OF THE COPPER NANOWIRE SURFACE FASTENER BY INVESTIGATING THE DIAMETER RATIO OF NANOWIRES. Motohiro Kato, Yuhki Toku, Yasuyuki Morita, Yang Ju.	345
7297	ELECTROMAGNETIC PERFORMANCE OF SPIRALLY DEFORMED COATED NANOWIRES. Yuhki Toku, Yuji Ueda, Yasuyuki Morita, Yang Ju.	347
TOPIC-F: TRIBOLOGY AND SURFACE ENGINEERING		349
7076	STRUCTURAL DEGRADATION OF LUBRICATING GREASES. AN ENERGY DRIVEN PROCESS. Erik Kuhn.	351
7177	CROSS-SECTIONAL MICROSTRUCTURE AND STRESS DISTRIBUTIONS IN THIN FILMS DURING INDENTATION REVEALED BY X-RAY NANODIFFRACTION. Josef Keckes, Rostislav Daniel, Juraj Todt, C. Krywka, M. Burghammer.	353
7194	EVALUATION OF RESEARCH OPPORTUNITIES OF A TRIBOLOGICAL TESTING TAPE MACHINE. Wojciech Żurowski, Wojciech Kucharczyk, Jarosław Zepchło.	355
7265	FAULT DETECTION IN DIESEL ENGINE INJECTORS USING A VIBRATION AND SOUND PRESSURE LEVEL TECHNIQUE. Jarbas S. Medeiros, Daniel M. Lago, Antônio C. Moreira Filho, Efrain P. Matamoros, João T.N. Medeiros.	357

7304	MICROSTRUCTURE ANALYSIS OF RARE EARTH-MAGNESIUM ALLOY REPAIRED USING HIGH POWER SURFACE LASER CLADDING. Rongjuan Yang, Dongyun Ge, Xuan Zhao.	369
TOPIC-G: MECHANICAL DESIGN AND PROTOTYPING		371
7059	USING DESIGN S-N CURVES AND DESIGN STRESS SPECTRA FOR PROBABILISTIC FATIGUE LIFE ASSESSMENT OF VEHICLE COMPONENTS. Miloslav Kepka, Miloslav Kepka Jr.	373
7077	QUANTITATIVE ANALYSIS OF RELATIONSHIP BETWEEN EXTRUSION BLOW MOLDING PROCESS PARAMETERS AND DEFORMATION PROPERTIES. Esther R. Dorp, Berenika Hausnerova, Bernhard Möglinger.	385
7082	MAIN EXPECTED PROBLEMS DURING THE IMPLEMENTATION OF "INDUSTRY-4.0" REFORMS AND THEIR PRACTICAL SOLUTIONS BASED ON IMPROVING THE EFFICIENCY OF USED MECATRONIC SYSTEMS. Raul Turmanidze, Vasili Bachanadze, Giorgi Popkhadze.	387
7189	A NUMERICAL AND EXPERIMENTAL STUDY OF THE ENERGY ABSORPTION CAPACITY OF AUXETIC STRUCTURES MANUFACTURED WITH ADDITIVE TECHNOLOGY. Filip Sarbinowski, Remigiusz Labudzki, Rafał Talar, Adam Patalas.	399
7270	DESIGN METHODOLOGY OF AN ALUMINIUM CHASSIS. Ana L. Ramos, Oscar Zapata, Tania Berber, Natalia Navarrete.	403
7301	COMPARISON OF UNIBODY AND FRAME BODY VERSIONS OF ULTRA EFFICIENT ELECTRIC VEHICLE. Wojciech Skarka, Tomasz Pabian, Michał Sosnowski.	405
7305	METHODOLOGY FOR THE OPTIMIZATION OF AN ENERGY EFFICIENT ELECTRIC VEHICLE. Wojciech Skarka.	415
TOPIC-H: BIOMECHANICAL APPLICATIONS		423
7050	KINEMATICS ANALYSIS OF MOZAMBICAN ATHLETES IN THE 100 METERS RACE. Ercilio Machanguan, Anicêncio Macitela, Alberto Graziano.	425
7051	ANALYSIS OF THE PERFORMANCE OF LOWER MEMBERS IN SUSPENSION SERVICE IN VOLLEYBALL. Anicêncio Macitela, Alberto Graziano.	429
7063	THE EFFECT OF MULTIPLE NEUROTRANSMISSION ON THE BIOMECHANICS OF THE HUMAN STOMACH. Saleh Alrowaili, Roustem Miftahof.	433
7066	BIOMECHANICS OF THE BOLUS PROPULSION IN THE COLON. Omar Al Qatrawi, Roustem Miftahof.	435
7067	BIOMECHANICS OF THE HUMAN STOMACH AFTER DIABETIC VAGOTOMY. Dareen Bash, Roustem Miftahof.	437
7071	MODELLING OF THE EFFECT OF METOCLOPRAMIDE ON THE BIOMECHANICS OF THE GASTROPARETIC HUMAN STOMACH. Fatima Alhayki.	439
7075	CONTRACTILE ACTIVITY OF THE HUMAN STOMACH UNDER COMPLEX STIMULATION. AlDana M. Zaid, Roustem Miftahof.	441

7094	MODELING OF LARGE GAUGE ARTERIES WITH A SOFT ELASTIC MEMBRANE PIPE FINITE ELEMENT. Francisco Q. Melo, António G. Completo, José L.S. Esteves.	443
7190	A MECHANICAL ANALYSIS OF CANCELLOUS BONE IN FEA SIMULATION RESEARCH AND EXPERIMENTAL TESTING WITH THE μ CT CONTROL. Adam Patalas, Remigiusz Labudzki, Filip Sarbinowski, Bartosz Gapiński, Rafał Talar.	445
7203	INFLUENCE OF BONE QUALITY IN THE BEHAVIOUR OF GRAFT FIXATION IN ANTERIOR CRUCIATE LIGAMENT RECONSTRUCTION. Covadonga Quintana, Cristina Rodriguez, Ines Peñuelas, Antonio Maestro.	447
7204	BIOMECHANICAL BEHAVIOUR CHARACTERIZATION OF THE MATERIALS INVOLVED IN ANTERIOR CRUCIATE LIGAMENT RECONSTRUCTION. Covadonga Quintana, Cristina Rodriguez, Ines Peñuelas, Antonio Maestro.	457
7267	IN VIVO CHARACTERIZATION OF MICRO ARCHITECTURE OF A HUMAN VERTEBRA BY MICRO-IMAGING. Hacene Ameddah, Hammoudi Mazouz.	471
TOPIC-I: CIVIL AND STRUCTURAL ENGINEERING APPLICATIONS		477
7057	AGGREGATE SIZE AND LATERAL DIMENSION EFFECTS ON CORE COMPRESSIVE STRENGTH OF CONCRETE. Adel Benidir, M'Hamed Mahdad, Ahmed Brara.	479
7068	EXPERIMENTAL STUDY OF THE MECHANICAL BEHAVIOR OF COMPRESSED STABILIZED EARTH BLOCKS AND WALLS. M'Hamed Mahdad, Adel Benidir, Ahmed Brara.	487
7083	SUBSTITUTION OF THE TRANSVERSE REINFORCEMENT WITH ENGINEERED CEMENTITIOUS COMPOSITE IN RC EXTERIOR BEAM-COLUMN JOINTS SUBJECTED TO CYCLIC LOADING. Shwan H. Said.	497
7085	THE EFFECTS OF SOIL CATEGORY ON THE SEISMIC RESPONSE OF CIRCULAR STEEL WATER TANKS WITH MEDIUM H/D RATIO USING LAGRANGIAN APPROACH. Armen Assatourians, Sohrab Fallahi.	499
7090	IDENTIFICATION OF HYSTERICALLY DEGRADING STRUCTURES USING THE BOUC-WEN-BABER-NOORI (BWBN) MODEL. Ying Zhao, M. Noori, Wael Altabay.	507
7108	PERFORMANCE OF AIR CURED CONCRETE TREATED WITH WATERPROOFING ADMIXTURES OR SURFACE TREATMENTS. Sirwan Kamal, Hsein Kew, Hamid Jahromi.	509
7112	NON-DESTRUCTIVE EVALUATION OF DETERIORATED REINFORCED CONCRETE SLAB USING EXPERIMENTAL AND NUMERICAL METHODOLOGIES. Norbert Renault, Jean-Louis Gallias, Christophe Barnes.	511
7118	STRAIN-RATE INFLUENCE ON A SHAPE MEMORY ALLOY BASED DAMPER. João Morais, Carlos Santos, Paulo Morais.	513
7121	PROBABILISTIC TRAFFIC LOAD IDENTIFICATION FOR CONCRETE BRIDGES. Sebastian Zorn, Jörg F. Unger.	521
7130	COST CONSEQUENCE-BASED RELIABILITY ANALYSIS OF BURSTING FAILURE IN SUBSEA PIPELINES. Bahram Mehrafrooz, Pedram Edalat, Mojtaba Dyanati.	523
7162	DAMDAMAGE1.0: A MATLAB 3DFE PROGRAM FOR NON LINEAR ANALYSIS OF ARCH DAMS. André Alegre, Sérgio Oliveira.	525

7165	RESILIENCY OF SLAB TRACK SYSTEMS SUBJECTED TO LONG-TERM DETERIORATION: NUMERICAL MODELLING WITH SUBSTRUCTURING TECHNIQUES. Samuel Matias, Patrícia Ferreira.	527
7167	INFLUENCE OF 4 BOLTS-PER-ROW CONNECTION ON A STEEL FRAME BUILDING SUBJECTED TO COLUMN LOSS. Daniel Nunes, I. Marginean, Adrian Ciutina, Florea Dinu.	529
7168	MODAL IDENTIFICATION METHODS IN TIME DOMAIN NUMERICAL TESTS AND APPLICATIONS IN CIVIL ENGINEERING. Ana Prior, Sérgio Oliveira, Matilde Freitas.	539
7170	MONITORING AND ANALYSIS OF CONCRETE DAMS BEHAVIOR OVER TIME CONSIDERING SWELLING EFFECTS. INTEGRATED USE OF FINITE ELEMENT MODELS AND MODELS FOR EFFECTS SEPARATION. Miguel Rodrigues, Sérgio Oliveira.	541
7171	OPTIMIZATION OF WEB STIFFENER IN COLD-FORMED STEEL CHANNEL BEAMS SUBJECTED TO PURE BENDING. Ayman R. Ahmed, Ahmad M. Abdullah, Sedky A. Tohamy, Amr Bakr Saddek.	543
7188	EVALUATION OF HYGRIC PROPERTIES OF CONTEMPORARY PLASTERS. Jan Fořt, Zbyšek Pavlík, Lukáš Balík, Robert Černý.	545
7191	ULTIMATE CAPACITY OF STEEL FRAMES WITH BOLTED CONNECTIONS UNDER COLUMN LOSS SCENARIOS. Ioan Marginean, Florea Dinu, Robert Kulcsár, Simina Sabău, Dan Dubina.	553
7192	APPLICATION OF A COMPLETE STRUCTURAL HEALTH MONITORING CHAIN ON THE CANADIAN RIVIÈRE-AUX-MULETS BRIDGE NUMERICAL MODEL SUBJECTED TO A SEISMIC LOAD. Farouk Frigui, Jean-Pierre Faye, Carmen Martin, Olivier Dalverny, François Pérès, Sébastien Judenherc.	555
7195	NUMERICAL STUDY OF THE ROBUSTNESS OF STEEL STRUCTURES WITH FRICTION JOINTS. Francisca Santos, Aldina Santiago, Gianvittorio Rizzano, Luís S. Silva, Massimo Latour.	569
7201	STATIC AND DYNAMIC ELASTICITY MODULE ANALYSIS OF CEMENT COATING MORTARS. Ana Isabel Marques, João Morais, Carlos Santos, Paulo Morais, Maria do Rosário Veiga.	571
7202	DEVELOPMENT OF ALTERNATE LOAD PATHS IN STEEL FRAMES WITH COMPOSITE BEAMS SUBJECT TO ACCIDENTAL EXPLOSIONS. Florea Dinu, Ioan Marginean, Ioan Petran, Mihai Senila, Calin Neagu, Dan Dubina.	581
7205	NUMERICAL STUDIES ON SEISMIC RESPONSE OF STEEL AND COMPOSITE ECCENTRICALLY BRACED FRAMES. Mihai Senila, Ioan Petran, Calin Neagu, Florea Dinu.	583
7209	NUMERICAL MULTI-SCALE APPROACH FOR MASONRY INFILLED FRAME. T.T.N. Nguyen, N.Q. Vu, S.T. Nguyen, N.H. Tran, M.N. Vu.	585
7212	FRAGILITY CURVES FOR RC BRIDGES USING GENERALIZED PUSHOVER ANALYSIS. Camilo Perdomo, Ricardo Monteiro.	587
7213	ANALYSIS OF THE GROWTH CURVE FOR THE USE OF THE REJECT OF GRANITE ROSA IRACEMA IN THE MANUFACTURE OF EXIT FUNNELS IN THE TEXTILE INDUSTRY. Joseanne Alves de Sousa, Jorge Luiz Cardoso, Cândido S. Lobo.	589

7216	STUDY OF THE PERFORMANCE OF R.C. WALLS WITH OPENINGS USING AN ANALYTICAL FINITE ELEMENT MODEL. Alaa Morsy, Youssef Ibrahim.	591
7217	INTEGRATING THREE INSPECTION/MONITORING METHODS FOR CIVIL ENGINEERING APPLICATIONS. Amir Nasrollahi, Piervincenzo Rizzo.	593
7227	ECODESIGN FOR DECONSTRUCTION IN THE LIFE CYCLE POST-OPERATIONAL STAGE TO IMPROVE CONCRETE RECYCLING IN BRAZIL. Silvia Leticia Vacelkoski, George Stanescu.	595
7236	INVESTIGATION INTO THE DOUBLE-LAYER BARREL VAULT SPACE STRUCTURE RESISTANCE TO PROGRESSIVE COLLAPSE. Karim Abedi, Shahram R. Kolachahi.	607
7248	IMPACT OF PREVENTIVE MAINTENANCE ON FLEXIBLE PAVEMENT SERVICE LIFE. Manuel Ruíz, Luís Ramírez, Fermín Navarrina, J.R. Fernández Mesa, David López-Navarrete, Mario Aymerich.	615
7250	USE OF STRUCTURAL MASONRY OF CONCRETE BLOCKS AND PROTECTED LABS WITH FENCED CORDOBA IN RESIDENTIAL BUILDINGS. Harlen Nunes, Roberto Carvalho.	625
7255	STRUCTURAL RECOVERY AND PROJECT MANAGEMENT: THE DESIGN DRAWS CONTRIBUTION. Giorgio Garzino.	627
7259	TIMBER SHEAR WALLS: NUMERICAL ASSESSMENT OF THE EQUIVALENT VISCOUS DAMPING. Giorgia Di Gangi, Cristoforo Demartino, Giuseppe Quaranta, Marco Vailati, Giorgio Monti.	641
7260	THERMAL EFFECT OF A LOCALIZED FIRE IN THE STEEL STRUCTURE OF AN OPEN CAR PARK. Paulo Piloto, Edson M.S. Júnior, Francisco A.A. Gomes.	651
7261	FIRE DYNAMICS IN OPEN COMPARTMENTS. Paulo Piloto, Ketlen Possoli, Luiz C.M. Júnior, Khadouma Nechab, Benarous Abdallah.	663
7271	DATA PROCESSING FOR DATA ACQUISITION SYSTEMS: ANALYSIS OF VIBRATIONS IN STRUCTURES. R.S. Gonçalves, Matheus S. Vieira, Thalyta L. Santos, J.G.S. Jesus.	673
7275	PERFORMANCE OF DUAL-SHOULDER-MOUNT-TRUSS WEATHERING-STEEL OVERHEAD SIGN STRUCTURES IN WEST VIRGINIA. Wael Zatar, Hai Nguyen.	675
7276	DEVELOPMENT OF A STRUCTURE VIBRATIONS MONITORING INSTRUMENT USING TRIAXIAL ACCELEROMETER. J.G.S. Jesus, Matheus S. Vieira, Thalyta L. Santos, R.S. Gonçalves.	677
7286	STABILITY EVALUATION OF MARBLE STONE CLADDING AFFECTED BY BOWING AND WIND PRESSURE - A CASE STUDY. Rui Sousa, Hipólito Sousa.	679
TOPIC-J: IMPACT AND CRASHWORTHINESS		689
7131	A FINITE ELEMENT MODEL TO STUDY WELD AND GEOMETRIC IMPERFECTIONS IN AN IMPACT ATTENUATOR DEVICE. Jose A. López-Campos, Abraham Segade, E. Casarejos, Jose R. Fernandez, J.A. Vilán.	691
7132	STUDY OF A CRASH BOX DESIGN OPTIMIZED FOR A UNIFORM LOAD PROFILE. Abraham Segade, Alejandro Bolaño, Jose A. López-Campos, E. Casarejos, Jose R. Fernandez, J.A. Vilán.	701

7144	RESEARCH ON THE ANISOTROPIC PROPERTIES OF WOOD AT HIGH-RATE LOADING. Anatoly Bragov, Alexander Konstantinov, Andrey Lomunov.	717
7160	ESTIMATION OF DEFORMATION ENERGY DURING IMPACT DESTRUCTION OF ADHESIVE JOINT SAMPLES. Jan Godzimirski, Andrzej Komorek, Robert Szczepaniak.	727
7193	ANALYTICAL MODELING OF THE TRANSITION OF THE PROGRESSIVE FOLDING MODE OF THIN-WALLED TUBES AFTER FOAM-FILLING. Fan Yang, Shaker A. Meguid.	735
7198	OPTIMIZATION STRATEGIES FOR CRASH RELEVANT VEHICLE STRUCTURES. Ralf Sturm, Michael Schäffer, Marco Münster.	737
7226	USE OF COMPUTATIONAL METHODS TO EVALUATE DAMPING DEVICE EFFICIENCY DURING THE DESIGN OF NUCLEAR POWER PLANT EQUIPMENT. A.M. Bragov, O Yu. Vilensky, A. Yu. Konstantinov, D.A. Lapshin, M.G. Malygin, V.V. Petrunin.	739
7256	MECHANICAL STUDY OF ADDITIVE MANUFACTURED HONEYCOMB STRUCTURES. Piotr Dziewit, Paweł Płatek, Jacek Janiszewski.	741
7321	MULTIBODY DYNAMIC ANALYSIS OF WHIPLASH. Mohamed T. Z. Hassan, Mo Gabriel Shi, S. A. Meguid.	743
7322	EFFECT OF IMPACT SEVERITY ON OCCUPANT'S RESPONSE DURING REAR-END COLLISIONS. Mohamed T. Z. Hassan, S. A. Meguid.	745
	TOPIC-L: INDUSTRIAL ENGINEERING AND MANAGEMENT	747
7055	CUTTING AND PASSIVE TIMES CALCULATION FOR TURNING PROCESS. Nivaldo L. Coppini, Gabriel N. Oliveira, Danilo E. Braga.	749
7070	CONDITION MONITORING WITH PREDICTION BASED ON OIL ENGINES OF URBAN BUSES - A CASE STUDY. Hugo Raposo, José T. Farinha, Inácio Fonseca, Luís A. Ferreira.	751
7087	BUSINESS SUSTAINABILITY THROUGH THE PRACTICE OF CSR: THE A. PETTI SPA EXPERIENCE. Maria R. Sessa, Ornella Malandrino, Daniela Sica, Stefania Supino.	755
7133	DEVELOPING THE BEST PREVENTIVE MAINTENANCE POLICY FOR FULLY AUTOMATED SHIP-TO-SHORE CRANE. Yassine Achhal, Hassan Samadi.	757
7148	COMMON CAUSE ANALYSIS OF CIRCULAR VARIABLE NACELLE INLET CONCEPTS FOR AERO ENGINES IN CIVIL AVIATION. Stefan Kazula, David Grassel, Klaus Höschler.	759
7153	NEW APPROACH FOR THE JOINT OPTIMIZATION OF THE DESIGN AND MAINTENANCE OF MULTI-COMPONENT SYSTEMS BY INTEGRATION OF LIFE CYCLE COSTS. Oussama Adjoul, Khaled Benfriha, Améziane Aoussat, Yacine Benabid.	771
7155	METHODOLOGICAL FRAMEWORK FOR IMPLEMENTATION OF A PREDICTION RELIABILITY MODEL FOR IGBT POWER MODULES USED IN RAILWAY APPLICATIONS. Essi Dabla, François Pérès, Carmen Martin, Claire Fournier, Michel Piton, Floran Andrianoelison.	783
7157	DEFINITION AND IMPLEMENTATION OF AN INTEGRATED MANAGEMENT PLAN (IMP) APPLIED TO THE EQUIPMENT AT PERIODICAL TECHNICAL INSPECTION (PTI) STATIONS. Julio Garcia-Cordoní, Pablo Izquierdo, José A. Vilán, Abraham Segade, E. Casarejos, M.L. Lago.	785

7159	PRELIMINARY SYSTEM-SAFETY-ANALYSIS AND COMPARISON BETWEEN TWO NEW BROADBAND NOISE ABSORBING ACOUSTIC-LINER CONCEPTS FOR CIVIL AVIATION. Marcel Mischke, Stefan Kazula, David Grasselt, Klaus Höschler.	795
7169	A MECHANICAL AND STATE ANALYSIS OF A GAS TURBINE. Suzana Lampreia, Vitor Lobo, José Requeijo.	797
7180	INTEGRATION OF MAINTENANCE SYSTEMS. Sarje Suhas.	805

SPECIAL SESSIONS 807

SYMPOSIUM-1: EXPERIMENTAL MECHANICS FOR RELIABILITY 809

7058	DRAG REDUCTION OF A SWEEP WING BY MEANS OF PLASMA ACTUATORS. Sergey Chernyshev, Marat Gamirullin, Andrey Kiselev, Aleksandr Kuryachii, Sergey Manuilovich, Dmitry Sboev.	811
7127	DUCTILITY OF TITANIUM ALLOYS IN A WIDE RANGE OF STRAIN RATES. Vladimir V. Skripnyak, Vladimir A. Skripnyak, Evgeniya G. Skripnyak.	813
7141	AN IN-SITU EVALUATION OF STRUCTURAL DAMAGE IN A HIGH POWER SPALLATION NEUTRON SOURCE. Masatoshi Futakawa, Tao Wan, Hiroyuki Kogawa, Takashi Naoe.	823
7199	INFRARED THERMOGRAPHY AND DIC USED TO INVESTIGATE GUM METAL LOCALIZATION EFFECTS. Elzbieta Pieczyska, K.M. Golasiński, M. Staszczak, M. Maj, T.O. Furuta, S. Kuramoto.	825
7274	APPLICATION OF THREE-AXIS ACCELEROMETER ON VIBRATION ANALYSIS IN MACHINING PROCESSES. R.S. Gonçalves, Thalyta L. Santos, J.G.S. Jesus, Matheus S. Vieira.	827
7323	TRACKING OF DISPLACEMENT FIELD USING STEREO-CORRELATION IMAGES. A. May, A. Mokdad, H. Habouche, T. Rehamnia..	829

SYMPOSIUM-2: MODELING OF FRACTURE AND FRAGMENTATION OF SOLIDS UNDER STATIC AND DYNAMIC LOADING. DETERMINISTIC AND PROBABILISTIC APPROACHES 839

7078	PERIDYNAMICS ANALYSIS OF GLASS FRACTURE UNDER EXPLOSION LOAD. Jian Tu, Li-jun Zhao, Shan Yu, Chun-liang Xin.	841
7079	PROTECTION OF STRUCTURES AGAINST LONG PROJECTILES. Alexander Gerasimov, Sergey Pashkov, Roman O. Cherepanov.	849
7099	MODELLING POROUS STRUCTURES AND MECHANICAL BEHAVIOUR OF CERAMICS USING PROBABALISTIC APPROACH. Igor Yu. Smolin, Valentina A. Mikushina, Pavel V. Makarov, Mikhail O. Eremin.	851
7100	MATHEMATICAL MODEL OF GENERATION AND PROPAGATION OF SLOW DEFORMATION FRONTS. Pavel V. Makarov, A. Yu. Peryshkin, Mikhail O. Eremin.	853
7128	MODELLING OF THE MECHANICAL RESPONSE OF Zr-Nb AND Ti-Nb ALLOYS IN A WIDE TEMPERATURE RANGE. Vladimir A. Skripnyak, Vladimir V. Skripnyak, Evgeniya G. Skripnyak, Nataliya V. Skripnyak.	855

7134	EXPERIMENTAL STUDY AND NUMERICAL MODELLING OF FRACTURE PROCESS TRANSITION TO BLOW-UP MODE. Pavel V. Makarov, Igor Yu. Smolin, Alexey S. Kulkov, Mikhail O. Eremin, Vladimir A. Tunda.	863
7145	PROBABILISTIC FAILURE OF CERAMICS UNDER HIGH-VELOCITY IMPACT. Sergey A. Zelepugin, Vladimir F. Tolkachev, Alexey S. Zelepugin.	865
7147	NUMERICAL SIMULATION OF THE EXPLOSIVE COMPACTION OF MULTI-COMPONENT MIXTURES. Sergey A. Zelepugin, Oksana Ivanova.	871
7185	DISCRETE ELEMENTS SIMULATION OF GEOLOGICAL FAULT FORMATION. Vadim Lisitsa, Vladimir Tcheverda, Victoria Valyanskaya.	877
7225	PENETRATION OF STEEL AND ICE BARRIERS BY A PROJECTILE AT LOW INITIAL SPEEDS (<325 m/s). Maxim Yu. Orlov, Yuri N. Orlov, Viktor P. Glazyrin, Yu. N. Orlova.	887
7234	ANALYSIS OF THE PENETRATION OF BARRIERS BY IMPACTORS WITH AN EXPLOSIVE SUBSTANCE. Viktor P. Glazyrin, Maxim Yu. Orlov, Yuri N. Orlov.	893
7263	A METHOD FOR DETERMINING RELIABILITY OF A SELECTED STRUCTURAL COMPONENT OF AN AIRCRAFT FROM THE POINT OF VIEW OF FATIGUE PROCESSES. Mariusz Zieja, Mirosław Zieja, Mariusz Ważny.	899
SYMPOSIUM-3: FRACTURE BEHAVIOUR AND FATIGUE DAMAGE OF STRUCTURES: THEORY AND EXPERIMENTS		909
7095	FRACTURE FRAMEWORK OF PLASTIC PIPES: EXPERIMENTAL WORK AND FINITE ELEMENT ANALYSIS OF DOUBLE POLYETHYLENE CANTILEVER BEAM SPECIMENS. Federico Rueda, César Hernández, Patricia Frontini.	911
7142	INFLUENCE OF MICROSTRUCTURE ON THE MECHANICAL BEHAVIOUR OF STEEL IN EXTREME ENVIRONMENT. Valeriy Lepov, Albert Grigoriev, Afanasiy Ivanov, V. Achikasova, Anastassia Ivanova, Nikolay Balakleiskii, Boris Loginov, Artem Loginov.	913
7146	EFFECT OF GRAPHITE MORPHOLOGY ON COMPACTED GRAPHITE IRON THERMOMECHANICAL FATIGUE PROPERTIES. Edwin A. Lopez, S. Ghodrat, Leo Kestens.	915
7206	FATIGUE IMPROVEMENT OF WELDED ELEMENTS BY ULTRASONIC IMPACT TREATMENT. Yuri Kudryavtsev.	919
7210	ULTRASONIC MEASUREMENT OF RESIDUAL STRESSES IN WELDED JOINTS. Yuri Kudryavtsev, Jacob Kleiman.	921
SYMPOSIUM-4: RELIABILITY OF TRIBOLOGICAL SYSTEMS AT VARIED LENGTH SCALES		923
7091	EFFECT OF SURFACE ENERGY ON FRICTION COEFFICIENT OF CARBONACEOUS HARD COATINGS BY IN-SITU MEASUREMENT IN ESEM. Taichi Nakao, Makoto Terada, Noritsugu Umehara, Motoyuki Murashim.	925
7154	THE INFLUENCE OF MOLECULAR CLUSTERS ON LUBRICATING FILM FORMATION. Antoni Jankowski, Mirosław Kowalski, Andrzej Kulczycki, Wojciech Dziegielewski, Jarosław Kaluzny, Jerzy Merksiz.	927

7247	A NEW STOCHASTIC MODEL FOR PARTICULATE MATTER AND DEBRIS EMITTED BY DIESEL ENGINES. Fábio Oliveira, Daniel Lago, Manoel Oliveira Filho, João Medeiros.	939
7302	PROPOSAL OF DEVELOPMENT GUIDLINE FOR LOW FRICTIONAL MATERIAL IN OIL LUBRICATION WITH HIGH PERMITTIVITY MATERIAL. Motoyuki Murashima, See-Jun Oh, Takaaki Miyachi, Noritsugu Umehara, Takayuki Tokoroyama, Kota Konishi, Tatsuya Okamoto.	941
7306	THE WEAR OF DIAMOND-LIKE CARBON BY MOLYBDENUM BASED PARTICLES UNDER BOUNDARY LUBRICATION. Takayuki Tokoroyama, Takahiro Nishino, Makoto Yamaguchi, Khairul Kassim, Noritsugu Umehara.	943
SYMPOSIUM-5: ADDITIVE MANUFACTURING AND RAPID PROTOTYPING		945
7064	3D PRINTING TECHNIQUES OF CERAMIC CORES USED FOR TURBINE BLADES MANUFACTURING. Rafal Cygan.	947
7124	RESISTANCE OF 3D PRINTED POLYMER STRUCTURES AGAINST FATIGUE CRACK GROWTH. Johannes Knöchel, Michael Kropka, Thomas Neumeyer, Volker Altstädt.	949
7125	FATIGUE RESPONSE OF AS BUILT DMLS PROCESSED MARAGING STEEL AND EFFECTS OF MACHINING, HEAT AND SURFACE TREATMENTS. Dario Croccolo, Massimiliano De Agostinis, Stefano Fini, Giorgio Olmi, Francesco Robusto, Snezana Ciric-Kostic, Aleksandar Vranic, Nusret Muharemovic, Nebojsa Bogojevic.	951
7126	EXPERIMENTAL STUDY ON THE SENSITIVITY OF DMLS MANUFACTURED MARAGING STEEL FATIGUE STRENGTH TO THE BUILD ORIENTATION AND ALLOWANCE FOR MACHINING. Dario Croccolo, Massimiliano De Agostinis, Stefano Fini, Giorgio Olmi, Francesco Robusto, Nusret Muharemovic, Nebojsa Bogojevic, Aleksandar Vranic, Snezana Ciric-Kostic.	971
7214	HOW BUILD ORIENTATION AND THICKNESS OF ALLOWANCE MAY AFFECT THE FATIGUE RESPONSE OF DMLS PRODUCED 15-5 PH STAINLESS STEEL. Dario Croccolo, Massimiliano De Agostinis, Stefano Fini, Giorgio Olmi, Nebojsa Bogojevic, Snezana Ciric-Kostic.	987
7262	EVALUATION OF DIFFERENT NDT TECHNIQUES FOR THE PRODUCTION OF COMPOSITE MATERIALS FABRICATED BY ADDITIVE MANUFACTURING. J.P. Oliveira, Patrick L. Inácio, Fernando Crivellaro, Carlos P. Simão, E. Camacho, Rosa M. Miranda, A. Velhinho, F.M. Braz Fernandes, Telmo G. Santos.	997
SYMPOSIUM-6: FASTENING AND JOINING TECHNOLOGY		999
7122	A NOVEL FINITE ELEMENT MODEL METHODOLOGY FOR THE GENERIC MODELLING OF ADHESIVE AGEING. Mathias Creyf, Pol Coudeville, Wim Desmet, David Seveno, Stijn Debruyne.	1001
7136	INFLUENCE OF THE STIFFNESS AND FRICTIONAL CHARACTERISTICS ON THE SHANK TORQUE OF SCREWS IN BOLTED JOINTS. Dario Croccolo, Massimiliano De Agostinis, Stefano Fini, Giorgio Olmi, Francesco Robusto, Omar Cavalli, Nicolò Vincenzi.	1003
7235	MECHANICAL PERFORMANCE AND FRACTURE BAHAVIOR OF ADHESIVE-MULTI PIN JOINTS BETWEEN COMPOSITE AND METALLIC MATERIALS. Longquan Liu.	1009

7237	STRUCTURAL VALIDATION OF INTRAMEDULLARY NAILS: FROM EXPERIMENTATION TO VIRTUAL TESTING. Dario Croccolo, Massimiliano De Agostinis, Stefano Fini, Silvia Funaioli, Giorgio Olmi, Francesco Robusto.	1011
7242	DESIGN INFLUENCES OF PRELOAD RELAXATION BEHAVIOUR IN BOLTED JOINTS USING ALUMINIUM PARTS. Jens Peth, Christoph Friedrich.	1017
SYMPOSIUM-7: INFLUENCE OF MANUFACTURING PROCESSES IN INTEGRITY OF MECHANICAL OR STRUCTURAL COMPONENTS		1029
7053	RELIABILITY ASSESSMENT OF A SUBSEA ELECTRO-HYDRAULIC CONTROL SYSTEM. António H.M. Silva, Henrique da Hora, Rogrigo Fernandes.	1031
7054	VALUE STREAM MAPPING IN OPTIMIZING TERRESTRIAL PIPELINES ASSEMBLY. Nivaldo L. Coppini, Luiz F.C. Cunha.	1039
7072	EVALUATION AND CHARACTERIZATION OF WEAR BEHAVIOUR OF ROLLED STEELS FOR THE PRODUCTION OF A SCREW. Ricardo Paulo, Teresa Morgado, Alexandre Velhinho, Carla Machado, J. Pamies Teixeira.	1041
7073	STUDY OF WEAR BEHAVIOR OF A HELICAL GEAR. Miguel Mousinho, Teresa Morgado, David Braga, Alexandre Velhinho, Carla Machado, J. Pamies Teixeira.	1043
7239	EXPERIMENTAL STUDY OF LASER BEAM MACHINING IN Ti6Al4V ALLOY. Gabriela Belinato, Danielle M.D. Costa, Pedro P. Balestrassi, Pedro A.R.C. Rosa.	1045
7314	INTERACTION BETWEEN LEAN PHILOSOPHY AND INDUSTRY 4.0: EXPLORATORY STUDY. Beatrice P. Santos, Fernando C. Santos, Tânia M. Lima.	1047
SYMPOSIUM-8: SUSTAINABLE ENERGY SYSTEMS		1049
7056	DATA CENTERS AND THEIR ENERGY CONSUMPTION FOR CLIMATIZATION. Clito F. Afonso, João Moreira.	1051
7088	NUMERICAL INVESTIGATION OF FILM COOLING EFFECTIVENESS USING THE ANTI-VORTEX CONCEPTION. Fadéla Nemdili, Saliha Nemdili, Abbé Azzi.	1061
7115	A METHOD FOR HEAT TRANSFER CALCULATION IN FOUR-STROKE SPARK IGNITION INTERNAL COMBUSTION ENGINES. Pedro Carvalheira.	1063
7116	A METHOD FOR MASS BURNING RATE CALCULATION IN FOUR-STROKE SPARK IGNITION INTERNAL COMBUSTION ENGINES. Pedro Carvalheira.	1073
7281	EXPERIMENTAL AND NUMERICAL STUDY OF DIFFUSER AUGMENTED WIND TURBINE - DAWT. Lino M. Paulo, Jorge Paulo, João E. Ribeiro, Luís F. Ribeiro.	1085
SYMPOSIUM-9: OPTIMIZATION AND UNCERTAINTY QUANTIFICATION		1101
7069	UNCERTAINTY QUANTIFICATION USING A NEW NON INTRUSIVE STOCHASTIC APPROACH: APPLICATION TO THE ESTABLISHMENT OF INUNDATION MAPS DUE TO DAM BREAK FLOWS. Azzedine Abdedou, Azzedine Soulamani.	1103
7093	EFFECTIVE ESTIMATION OF CONFIDENCE IN THE VULNERABILITY ASSESSMENT OF UNCERTAIN STRUCTURAL SYSTEMS. Marco Vailati, Giorgio Monti.	1105

7104	THE RELIABILITY INDEX APPROACH WITH EVOLUTIONARY ALGORITHMS: APPLICATION TO THE RBRDO PROBLEM OF COMPOSITE STRUCTURES. Gonalo N. Carneiro, Carlos C. Ant3nio.	1107
7106	MULTI-OBJECTIVE OPTIMIZATION AIMING THE SUSTAINABLE DESIGN OF FRP COMPOSITE STRUCTURES. Carlos C. Ant3nio. <i>(Invited Paper)</i>	1115
7107	RESEARCH AND VALIDATION OF GLOBAL MPP IN THE RELIABILITY ANALYSIS OF COMPOSITE STRUCTURES. Lu3sa N. Hoffbauer, Carlos C. Ant3nio.	1127
7280	THE USE OF RESPONSE SURFACE OPTIMIZATION METHOD TO MINIMIZE THE VIBRATIONS IN THE MILLING PROCESS. Jo3o E. Ribeiro, Manuel B. C3sar, Ana I. Pereira.	1137
7313	RELIABILITY SYSTEM ANALYSIS FOR AIRCRAFT COMPOSITE STRUCTURES. Paola Caracciolo.	1145
SYMPOSIUM-10: BIOMECHANICS OF CARDIOVASCULAR AND ORTHOPAEDIC DISEASE		1147
7158	FLUID-STRUCTURE INTERACTION FOR HEMODYNAMIC STUDY IN PATIENT CORONARY ARTERIES - VALIDATION. Nelson Pinho, Catarina F. Castro, Carlos C. Ant3nio, Nuno Bettencourt, Luisa C. Sousa, S3nia I.S. Pinto.	1149
7161	CORRELATION BETWEEN GEOMETRIC PARAMETERS OF LEFT CORONARY ARTERY AND PLAQUE DEPOSITION IN LEFT ANTERIOR DESCENDING ARTERY. Nelson Pinho, Catarina F. Castro, Carlos C. Ant3nio, Nuno Bettencourt, Luisa C. Sousa, S3nia I.S. Pinto.	1155
7178	HEMODYNAMICS IN PATIENT-SPECIFIC CORONARY ARTERIES CONSIDERING BLOOD ELASTIC BEHAVIOR: NUMERICAL STUDY. S3nia I.S. Pinto, Jo3o B. Campos.	1159
7289	LATERAL LUMBAR FUSION, A MINIMALLY INVASIVE SURGICAL APPROACH FOR LUMBAR INTERBODY FUSION. Susana C. Caetano, Luisa C. Sousa, Marco Parente, Renato Natal, Henrique Sousa, Jo3o Gonalves.	1165
7293	VESSEL DETECTION IN CAROTID ULTRASOUND IMAGES USING ARTIFICIAL NEURAL NETWORKS. Catarina F. Castro, Carlos C. Ant3nio, Luisa C. Sousa.	1169
SYMPOSIUM-12: MECHATRONICS DESIGN: APPLICATIONS AND CASE STUDIES		1173
7183	DESIGN OF A CONTROL SYSTEM FOR A MEDICAL WRIST REHABILITATION DEVICE. Eurico Seabra, Luis F. Silva, Valdemar Leiras, Ricardo Ferreira.	1175
7184	DESIGN, DEVELOPMENT AND CONSTRUCTION OF A MEDICAL WRIST REHABILITATION DEVICE. Eurico Seabra, Luis Silva, Ricardo Ferreira, Valdemar Leiras.	1177
7249	HAND TENSOR: A FULL MOTION HAND PROSTHESIS WITH MECHANISMS BY ONE SINGLE TRACTION ENGINE. Jo3o E. Polis, Cecilia Am3lia Zavaglia, Carlos A. Cimini Jr.	1179
7252	ASBGO*: A MECHATRONIC IMPROVED SMART WALKER. Joana Alves, Cristina P. Santos, Eurico Seabra, Luis F. Silva.	1181
7278	TGK DYNAMIC ANALYSIS OF A HUMANOID RESCUE ROBOT. Gerardo Garc3a, Enrique Vazquez, Pedro de J. Garc3a, Jonathan A. Soto, Isidro Sanchez, Juan G. Sandoval.	1183

SYMPOSIUM-13: STRUCTURAL DYNAMICS AND CONTROL SYSTEMS: THEORY, EXPERIMENTS AND APPLICATIONS		1185
7114	THE EFFICIENCY OF USING ADDITIONAL ISOLATED UPPER FLOOR (AIUF) IN SEISMIC UPGRADING OF RESIDENTIAL R.C. FRAME BUILDINGS IN ARMENIA. Armen Assatourians, Mohammad Reza Mehrdoust, Sohrab Fallahi.	1187
7143	DETECTION OF DEFECTS IN COMPOSITE HELMETS USING ULTRASONIC IR THERMOGRAPHY. Monika Pracht, Waldemar Swiderski.	1195
7187	MODAL DECOMPOSITION PROCEDURES FOR FE-BASED STUCTURAL MODELS WITH NON-PROPORTIONAL DAMPING. Evgueni Stanoev.	1201
7218	EVALUATION OF DYNAMIC WHEEL LOAD CONSIDERING BALLAST FOULING DURING TRAIN PASSAGE. Chayut Ngamkhanong, Keiichi Goto, Sakdirat Kaewunruen.	1227
7282	DYNAMIC CHARACTERIZATION OF MAGNETORHEOLOGICAL DAMPER AND EXPERIMENTAL ADJUSTMENT OF MODIFIED BOUC-WEN NUMERICAL MODEL. Said Boukerroum, Nadhira Kheznadji, Nacer Hamzaoui.	1229
7284	INFLUENCE OF STIFFNESS AND STRENGTH DEGRADATION OF AN INFILL WALL UPON THE PERFORMANCE OF A TMD. Pedro L.P. Folhento, Manuel T. Braz-César, António M.V. Paula, Rui C. Barros.	1231
7285	STRUCTURAL CONTROL OF A SDOF FRAME WITH NON-LINEAR HYSTERETIC BEHAVIOR USING A TUNED MASS DAMPER. Pedro L.P. Folhento, Manuel T. Braz-César, António M.V. Paula, Rui C. Barros.	1247
7287	NUMERICAL STUDY OF VIBRATIONS IN THE MILLING PROCESS. Ana Isabel Pereira, Manuel Braz-César, João E. Ribeiro.	1271
7288	THERMAL-BRIDGE ASSESSMENT IN GLAZING AND ALUMINIUM FRAMES BY THERMO-IMAGES: A CASE STUDY. Thiago Laignier, Manuel Braz-César, João Ribeiro.	1273
7308	SEISMIC ANALYSIS OF THE IRREGULAR FIRE STATION BUILDING OF L'AQUILA. Marco Scagnetti, Rui C. Barros, Marco Mezzi.	1275
7309	ON THE USE OF RADAR INTERFEROMETRY FOR THE STRUCTURAL MONITORING OF BRIDGES. Rui C. Barros, Fábio M. Paiva.	1287
7310	DYNAMIC STRUCTURAL HEALTH MONITORING OF A TRANSMISSION TOWER USING INTERFEROMETRIC RADAR. Fábio M. Paiva, Rui C. Barros, Luís Guerreiro.	1301
SYMPOSIUM-14: NEW PRODUCT DEVELOPMENT - DESIGN RESEARCH, MATERIALS SELECTION, INNOVATION SYSTEMS		1303
7065	RELIABILITY AND FAILURE OF POLICY IMPLEMENTATION OF INCLUSIVE DESIGN: CASE STUDIES OF OPEN SPACE IN BEIJING, TAIPEI, AND HONG KONG. Kin W.M. Siu, Yi Lin Wong, Jia Xin Xiao.	1305
7173	FAILURE OF SOCIAL INCLUSION IN PUBLIC SPACE: A CASE STUDY OF CHILDREN'S INCLUSIVE PLAYGROUND AND THEIR ENGINEERING STANDARDS IN HONG KONG. Yi Lin Wong, Mei Seung Lam, Kin W.M. Siu.	1313
7231	TECHNICAL CONTRADICTIONS SOLVING TECHNIQUE IN PLANT MAINTENANCE. Ivan Masin.	1319

7245	GUIDELINES FOR THE ALIGNMENT OF THE INTEGRATED MANAGEMENT SYSTEM WITH THE BUSINESS STRATEGY IN INDUSTRIAL COMPANIES. Luis C. Barbosa, Gilberto Santos, Otávio J. Oliveira.	1321
7253	THE CONTRIBUTION OF DESIGN TO THE SUSTAINABLE DEVELOPMENT BY THE TRANSFORMATION OF “NON-PLACES” IN URBAN GARDENS FOR PRACTICING URBAN AGRICULTURE. António Barroso, Maria João Félix, Gilberto Santos.	1323
7257	MATERIALS SELECTION AND INNOVATION SYSTEMS IN PACKING DESIGN FOR HEALTHY FOOD. Verónica Duarte, Maria João Félix.	1325
7295	LINKING MOULD FILLING AND STRUCTURAL SIMULATIONS. Carlos N. Barbosa, Julio C. Viana, Markus Franzen, Thomas Baranowski, Ricardo Simões.	1327
SYMPOSIUM-15: QUALITY AND PROCESS MANAGEMENT. THEORY, APPLICATIONS AND CASE STUDIES		1337
7086	FABRICATION LABORATORIES: WHERE NEW DIGITAL TECHNOLOGIES COME TO LIFE. Laura Bravi, Gilberto Santos, Federica Murrura.	1339
7113	DOUBLE-SHEAR W-S-W CONNECTIONS AT AMBIENT TEMPERATURE, WITH DIFFERENT APPLIED TENSILE LOADS AND STEEL DOWELS DIAMETER. Ruben D.A.R. Martins, Elza M.M. Fonseca.	1341
7117	W-W-W CONNECTIONS IN DOUBLE-SHEAR AT AMBIENT TEMPERATURE: EFFECT OF THE APPLIED TENSILE LOAD AND DOWELS DIAMETER. Abderrahim Aissa, Elza M.M. Fonseca, Alvear P.M. Daniel.	1349
7164	USING DMAIC FOR AUTOMATED IDENTIFICATION OF CAUSES AND MEASURES. Patrick Drange, Klaus Seiffert, Roland Jochem.	1357
7175	MAINTENANCE PLANS FOR KNOWN FAULTS EVENTS ADJUSTED WITH FUZZY LOGIC SUPPORT. Joaquin S. Herrera, Jhonny Rodrigues, Miguel Strefezza.	1359
7181	STATISTICAL ANALYSIS OF MAJOR ACCIDENT HAZARDS DATA: LEARNING FROM THE PAST TO DEVELOP A SAFETY CASE. Nasser M. Blahareth, Soliman A. Mahmoud.	1367
7196	ADAPTING KANO’S THEORY FOR WEIGHTING AND IMPLEMENTING CUSTOMER REQUIREMENTS ON A SOFTWARE TOOL FOR ASSESSING HUMAN RELIABILITY IN MANUAL ASSEMBLY. Christian Kern, Robert Refflinghaus.	1369
7211	DEVELOPING AND VALIDATING A MODEL OF ISO 9001 EFFECTIVENESS GAP: EMPIRICAL EVIDENCE FROM CHINA. Xiaojing Sun, Decheng Wen, Dongwei Yan.	1383
7258	THE ANALYSIS OF THE HELICOPTER TECHNICAL READINESS BY MEANS OF THE MARKOV PROCESSES. Józef Żurek, Mariusz Zieja, Jarosław Ziólkowski.	1387
7268	HUMAN FACTOR INFLUENCE ON EDDY CURRENT NON-DESTRUCTIVE TESTINGS. Carlos E. Silva, Rita C. Ferreira, Yasmin S. Martins, Dalton G. Souza, Ana C. Santos.	1401
7272	R&R STUDY FOR VALIDATION OF THE MEASUREMENT SYSTEM OF A PROCESS FOR THE MANUFACTURE OF WIRE COILS IN A TEXTILE INDUSTRY. Fabricio A. Almeida, Vinicius R. Paula, Rachel C. Sabioni, Daniel S. Cortez, José H. Gomes, Pedro P. Balestrassi.	1405

7273	R&R STUDY FOR ANALYSIS OF THE MEASUREMENT SYSTEM OF A PUMP LABELING PROCESS. Vinicius R. Paula, Rachel C. Sabioni, Fabricio A. Almeida, Petra N. Leite, José H. Gomes, Pedro P. Balestrassi.	1407
7279	THE JOURNEY OF MULTI NATIONAL ENTERPRISES INTO BUSINESS AND HUMAN RIGHTS. Pasquale Vetta.	1411
7283	CLUSTER ANALYSIS FOR ENHANCING PROCESS QUALITY IN JOB SHOP PRODUCTION. Antonia Fels, Max Ellerich, Robert Schmitt.	1413
7299	AN ANALYSIS OF QUALITY CONTROL GAME BETWEEN ONLINE SHOPPING PLATFORMS AND SELLERS UNDER COMPLETE INFORMATION. Yaping Li, Decheng Wen, Dongwei Yan.	1423
SYMPOSIUM-16: NEW MATERIALS AND DESIGN PROCESSES IN DENTAL MEDICINE		1425
7061	MATHEMATICAL MODELING OF TECHNOLOGIES FOR THE DESIGN OF INNOVATIVE FUNCTIONAL BIO-COATINGS FOR DENTAL IMPLANTS. Alla V. Balueva, Iliia N. Dashevskiy.	1427
7294	SURFACE CHANGES (SCANNING ELECTRON MICROSCOPE) INDUCED BY ARTIFICIAL SALIVA IN TITANIUM-MOLYBDENUM ORTHODONTIC LOOPS. Saul Castro, Maria Ponces, J.C. Reis Campos, Jorge Lopes, Maria Pollmann.	1429
7298	COMPARATIVE STUDY OF FLEXURAL STRENGTH IN THERMOFORMABLE DENTURE BASE RESINS. Tomás Pacheco, José M. Rocha, Nuno V. Ramos, J.C. Reis Campos, Maria H. Figueiral.	1431
7300	MAXILLARY AND MANDIBULAR SUPERIMPOSITIONS IN THE ASSESSMENT OF ORTHODONTIC TREATMENT OUTCOMES. Berta Meireles, Ana C. Braga, Lucinda G. Faria, Saul Castro, Maria João Ponces.	1433
7311	GROWTH PATTERN OF FETAL FACIAL STRUCTURES AND ULTRASOUND DIAGNOSIS MEANS FOR OROFACIAL ANOMALIES. Inês Côrte-Real, Rosete Nogueira, Ana C. Braga, J.C. Reis Campos, Francisco Valente, César Silva, Paula Vaz.	1435
7312	BIS-ACRYL RESIN COLOR EVALUATION BEFORE AND AFTER SURFACE TREATMENTS AND IMMERSION IN COLORING BEVERAGES. Susane L. Gras, Joseane Silva, Paula Vaz, César Silva, J.C. Sampaio Fernandes, Claudia Volpato.	1437
7315	BIOMEDICAL RAPID PROTOTYPING OF FREE-FORM SURFACES BY PLANAR CONTOURS METHOD. Hacene Ameddah, Hammoudi Mazouz.	1439
7316	FORENSIC IDENTIFICATION TOOL IN DENTAL REMOVABLE PROSTHODONTICS. Adélia Fernandes, André Correia, Ana Margarida Silva, Cristina Figueiredo.	1441
AUTHOR INDEX		1445

PREFACE

IRF2018 is the sixth international gathering of a prestigious series of Integrity-Reliability-Failure conferences coordinated by the International Scientific Committee of Mechanics and Materials in Design. This series of conferences are wholly devoted to advances in mechanics, materials, structural integrity and design. IRF2018 is jointly sponsored by the University of Porto, the University of Toronto and the Portuguese Society for Experimental Mechanics. The conference attracted over 200 participants with 258 accepted submissions involving 702 authors from 42 different countries around the world. The conference themes which address novel and advanced topics on Integrity, Reliability and Failure focused on Automotive, Locomotive, Aerospace, Civil Engineering and Biomechanics, including Computational Mechanics, Experimental Mechanics, Fracture and Fatigue, Composite and Advanced Materials, Tribology and Surface Engineering, Mechanical Design and Prototyping, Biomechanical Applications, Civil Engineering Applications, Energy and Thermo-Fluid Systems, and Industrial Engineering and Management, among other topics.

The conference also included an Open Forum on “*Can Professors Balance Scholarly Work, Teaching and Admin? The Challenges Going Forward*”, where an expert panel with many years of collective and active researchers and educators addressed the issue of balancing the activities of teaching, research and services within the universities.

We believe that the meeting offered our delegates a forum for the discussion and dissemination of their recent work in assessing the integrity, reliability and failure of engineering structures, components and systems, fostered research that integrates mechanics and materials in the design process, and promoted exchange of ideas and international co-operation among scientists and engineers in this important field of engineering.

We are particularly indebted to the authors and special guests for their presentations. Each of the 258 contributions offered opportunities for thorough discussions with the authors. Particularly, we acknowledge the excellent contributions of the participants, their innovative ideas and research directions, the novel modeling and simulation techniques, and the invaluable critical comments. We are also indebted to the outstanding keynote speakers who highlighted the conference themes with their contributions and covered the main topics of the conference. We also take this opportunity to thank the members of the International Scientific Committee and the reviewers for their time and helpful suggestions, the symposia organisers for their efforts and valuable contributions to the success of the event, and the local organising committee for an absolutely superb organization of the meeting in this magnificent city. To all of you, we offer our gratitude.

Given the rapidity with which science is advancing in all areas related to the topics discussed in the present meeting, the next conference in this series (Integrity-Reliability-Failure / IRF2020) will take place in the beautiful city of Funchal/Madeira, in July 2020. Undoubtedly, we expect IRF2020 to be as stimulating and interesting as IRF2018, as evidenced by the excellent contributions offered in this current event. We look forward to seeing all of you in Madeira in July 2020.

Shaker A. Meguid and J.F. Silva Gomes
Lisbon / Portugal, July 2018

International Scientific Committee

Aben, H. (Estonia)	Kaleta, Jerzy (Poland)	Semenski, D. (Croatia)
António, C.C. (Portugal)	Kepka, M. (Cz. Rep.)	Senner, Veit (Germany)
Banks-Sills, L. (Israel)	Kuhn, Erik (Germany)	Silva Gomes, J.F. (Portugal)
Barros, R.C. (Portugal)	Meda, Alberto (Italy)	Tröster, T. (Germany)
Bragov, A.M. (Russia)	Meguid, S.A. (Canada)	Turmanidze, Raul (Georgia)
Chvojan, Jan (Czech Rep.)	Mileiko, S.T. (Russia)	Umehara, N. (Japan)
Croccolo, D. (Italy)	Mines, R. (UK)	Van Hemelrijck, D. (Belgium)
De Agostinis, M. (Italy)	Ng, T.Y. (Singapore)	Van Tooren, M. (USA)
Goldak, J. (Canada)	Nowell, David (UK)	Wang, Changguo (China)
Guagliano, M. (Italy)	Olmi, Giorgio (Italia)	Weng, G. (USA)
Hess, Peter (Germany)	Owen, D.R.J. (UK)	Xu, H. (China)
Igumnov, L.A. (Russia)	Pieczyska, E. (Poland)	Yoshino, Masahiko (Japan)
Ju, Yang (Japan)	Reddy, J.N. (USA)	Zhang, X. (China)

Institutional Sponsors

FEUP

*University of Porto
Portugal*

MADL

*University of Toronto
Canada*

APAET

*Port. Soc. Exp. Mechanics
Portugal*

Co-Chairs

J.F. Silva Gomes (*U. Porto*)

Shaker A. Meguid (*U. Toronto*)

Organizing Committee

Carlos C. António, Catarina F. Castro, Clito F. Afonso, José M. Cirne
J. Reis Campos, Paulo G. Piloto, Teresa Morgado

Conference Secretariat

Angélica Ruivo, Nuno Pinto

With the support of

ABREU-PCO, Professional Congress Organizer (<http://abreuevents.com/>)
Mercatura Conference System (<http://www.mercatura.pt>)

ACKNOWLEDGMENTS

IRF2018 is sponsored by the following institutions, whose contributions are gratefully acknowledged

FEUP-Faculdade de Engenharia, Universidade do Porto

MADL-Mechanics and Aerospace Design Lab, University of Toronto

APAET-Portuguese Society for Experimental Mechanics

EURASEM-European Society for Experimental Mechanics

SEM-American Society for Experimental Mechanics

JSME-Japanese Society of Mechanical Engineering

IMEKO-International Measurement Confederation

DYMAT-European Association for Dynamics of Materials

INEGI-Instituto de Ciência e Inovação em Eng^a. Mecânica e Eng^a. Industrial

FCT-Fundação para a Ciência e a Tecnologia

Actuators - Open Access Journal

ABREU-PCO, Professional Congress Organizer



PAPER REF: 7280

THE USE OF RESPONSE SURFACE OPTIMIZATION METHOD TO MINIMIZE THE VIBRATIONS IN THE MILLING PROCESS

João Eduardo Ribeiro^{1,2(*)}, Manuel Braz César^{1,3}, Ana Isabel Pereira^{1,4}

¹ESTIG, Instituto Politécnico de Bragança, Bragança, Portugal

²CIMO, Bragança, Portugal

³Department of Civil Engineering, University of Porto, Portugal

⁴CeDRI, Bragança, Portugal

(*)Email: jribeiro@ipb.pt

ABSTRACT

In nowadays the increasing productivity in the shortest possible time and with high quality is undoubtedly one of the biggest challenges for the industry. Recently, the industry has turned to CNC machines very often, since they work automatically and are able to achieve high precision with a high performance. In this sense, the vibration has been presented during the last decades as one of the main limiting factors for the improvement of productivity specially in machining operations. This work contributes to the reduction of vibrations, proposing the use of optimization methods to minimize vibrations using milling parameters (cutting speed, feed speed, axial penetration and radial penetration) related to the section area. This study presents a theoretical analysis on the materials and tools used throughout the experimental tests, as well as the methods and programs used. During this study Response Surfaces method was used.

Keywords: machining, milling, vibration, optimization

INTRODUCTION

Technologies involving chip removal operations, also known as machining processes, have suffered tremendous advances in the last decades. The machining of new materials has demanding the development of new tools and machines as well as the optimization of the machining parameters (Grzesik, 2008). To obtain good results in machining processes it must be guarantee a low surface roughness, high removal rate and long tool life (Ribeiro, 2017). These goals are reached it is necessary that the structure of machine-tools have high static rigidity in bending and twisting, appropriate dynamic characteristics, dimensional stability, as well as low coefficient of thermal expansion. Beside these characteristics is very important to choose the optimal machining parameters and minimizing the vibrations effects.

The vibrations generated during the machining process can compromise surface finish and dimensional tolerances of the workpiece as well as wear and fracture of the cutting tools (Miguélez, 2010). Machining can result in three different types of vibrations that can increase with the low dynamic stiffness of one or more elements of the structure, such as the spindle, the tool chuck or even the cutting tool. These three types of vibration can be described by free, forced and self-excited vibrations (Tobias, 1965). Free vibrations occur when a mechanical system is transferred from its equilibrium condition and its vibration arises freely without external excitation. Forced vibrations appear due to external sources, which may originate from the entry of the cutting edges of a top milling cutter on the material to be

removed from the part or even due to the lack of balancing of the spindle of the machine. While the self-excited vibrations, usually named chatter, have the property of withdrawing energy from the system upon initiation and then increasing the energy level employed due to the interactions of the tool with the part during the machining process (Altintas, 2008). This type of vibration makes the process unstable and therefore is the most undesirable and difficult to control. Predicting the appearance of vibrations during the machining process is essential to ensure the best application of the cutting parameters and consequently maximize the productivity of a given machine-tool-clamping system. The stability prediction of the machining, which generally produces a diagram that relates the spindle rotation to the limiting machining depth, known as the stability lobe diagram is a widely used method to avoid the appearance of vibrations. However, it is necessary to obtain information about the characteristics of the material to be machined, the cut geometry and the dynamics of the system (Santos, 2014). Several studies have been carried out over the last few years in order to increase the stability limits of the machining process, which can be done basically in two ways: either passively or actively. Passive methods have usually altered the dynamic characteristics of the machine-tool-clamping system, increasing its dynamic range—that is, its ability to resist or absorb vibrations, improving stability limits in the machining process in general (Wang, 2004). In contrast, in active methods vibrations are monitored during the machining process and the dynamic characteristics of the machine-tool-clamping system can be changed as required. Another way of reducing or eliminating vibrations in the machining process is by interrupting the regeneration or self-excitation mechanism rather than changing the dynamic characteristics of the machine-tool-clamping system. For this, it is necessary to act on parameters of the machining process such as cutting speed, feed rate and machining depth. This method can be used actively or passively. As the change of the machining parameters, it can influence the dimensional and geometric tolerances of the part, which presupposes the greatest care with the amplitude of the variations of such parameters. It has the advantage of not requiring the addition of actuation mechanisms capable of changing the dynamic system, which in general makes it a solution that requires less financial investment and less application complexity, since no structural changes are necessary in the machine tool. The approach adopted to carry out this work was based on this method, that is, a set of systematic alterations of some machining parameters was implemented and the level of vibrations in the machine quill, as well as the degree of quality of the surface finish of the machined part. However, to minimize the number of experimental tests was implemented an optimization method.

For few decades many optimization algorithms have been developed and applied in machining processes (Aggarwal, 2005) they not only optimize the processes but also reduced the need for time-consuming and expensive tests. However, the most used are the fuzzy logic (Palanikumar, 2005), genetic algorithms (Wang and Jawahi, 2004), Taguchi technique (Gopalsamy, 2009), grey relational analysis (Tzeng, 2009) and response surface (Makadia, 2013).

The aim of this work is develop a method that is able to optimize the machining parameters to improve the surface quality and minimize the vibrations effects. For that, was used the optimization method of Response Surface to minimize the vibrations during the machining process. The level of vibrations has a direct relation in the surface quality and the tool life.

EXPERIMENTAL PROCEDURE

Before the implementation of experimental work was need to use an efficient process for the design of experiments. For this, an optimization method for design of experiments was

implemented, the response surface method. In this optimization method, the response surface method was elaborated and implemented through Matlab R2015a, and the modelling function was defined by the variables z and x . The variable z has five components that represent:

- z_1 - cutting speed;
- z_2 - cutting federate;
- z_3 - axial depth;
- z_4 - radial depth;
- z_5 - vibrations (RMS - Root Mean Square).

To model the problem, two distinct problems were defined. The first one has main objective to identifying the best model, i.e. to identify the function that best fit the data. The second problem is to determine the optimal values of the variables z_1 , z_2 , z_3 and z_4 that provide the minimum vibration.

For first problem, the variable x has between five and twenty-five components, whose minimum depends on the function, which represents the fit of the function to the given data.

Initially, several functions were tested to model the vibration of the tool. Thus, the following functions were tested:

- $f_1(x, z) = \sum_{i=1}^4 x_i z_i + x_5$;
- $f_2(x, z) = \sum_{i=1}^4 x_i z_i^2 + \sum_{i=1}^4 x_{i+4} z_i + x_9 \times z_1 \times z_2 + x_{10} \times z_1 \times z_3 + x_{11} \times z_1 \times z_4 + x_{12} \times z_2 \times z_3 + x_{13} \times z_2 \times z_4 + x_{14} \times z_3 \times z_4 + x_{15}$;
- $f_3(x, z) = \sum_{i=1}^4 x_i z_i^2 + \sum_{i=1}^4 x_{i+4} z_i + x_9$;
- $f_4(x, z) = \sum_{i=1}^4 x_i z_i^3 + \sum_{i=1}^4 x_{i+4} z_i^2 + \sum_{i=1}^4 x_{i+8} z_i + x_{13} \times z_1 \times z_2 + x_{14} \times z_1 \times z_3 + x_{15} \times z_1 \times z_4 + x_{16} \times z_2 \times z_3 + x_{17} \times z_2 \times z_4 + x_{18} \times z_3 \times z_4 + x_{19}$;
- $f_4(x, z) = \sum_{i=1}^4 x_i z_i^3 + \sum_{i=1}^4 x_{i+4} z_i^2 + \sum_{i=1}^4 x_{i+8} z_i + x_{13} \times z_1 \times z_2 + x_{14} \times z_1 \times z_3 + x_{15} \times z_1 \times z_4 + x_{16} \times z_2 \times z_3 + x_{17} \times z_2 \times z_4 + x_{18} \times z_3 \times z_4 + x_{19}$;
- $f_6(x, z) = \sum_{i=1}^4 x_i z_i^3 + \sum_{i=1}^4 x_{i+4} z_i^2 + \sum_{i=1}^4 x_{i+8} z_i + x_{13} \times z_1^2 \times z_2 + x_{14} \times z_1^2 \times z_3 + x_{15} \times z_1^2 \times z_4 + x_{16} \times z_2^2 \times z_3 + x_{17} \times z_2^2 \times z_4 + x_{18} \times z_3^2 \times z_4 + x_{19}$;
- $f_7(x, z) = \sum_{i=1}^4 x_i z_i^3 + \sum_{i=1}^4 x_{i+4} z_i^2 + \sum_{i=1}^4 x_{i+8} z_i + x_{13}$;
- $f_8(x, z) = \sum_{i=1}^4 x_i z_i^3 + \sum_{i=1}^4 x_{i+4} z_i + x_9$.

For the choice of the best model, n trials were considered in order to solve the problem of optimization of equation (1):

$$\min_x \sum_{i=1}^n (f(x, z) - z_5)^2 \quad (1)$$

To solve the problem of optimization of equation (1) we will use the Nelder-Mead method implemented in the toolbox Optimization of Matlab software.

Initially 10 ($n = 10$) trials were used to select the best model and 6 new assays were used to validate the functions studied.

Analyzing Table 1, it was found that the functions $f_1(x,z)$, $f_3(x,z)$ and $f_7(x,z)$ were the ones that had the minimum error, that is, they are the best models.

Subsequently, 16 ($n = 16$) trials were used to select which of the three functions would be the best. The values of Table 2 were obtained from the model validation.

Table 1 - Results for 10 of 16 tests.

Function	Minimum found	N. iterations	Functions evaluations
f_1	5.22×10^1	140	262
f_2	6.81×10^7	2187	3000
f_3	4.18×10^2	881	1380
f_4	4.85×10^{12}	2776	3800
f_5	5.71×10^{14}	3888	5000
f_6	5.92×10^{14}	2877	3800
f_7	5.40×10^3	1604	2451
f_8	2.02×10^7	719	1280

Table 2 - Results for 16 of 16 tests.

Function	Minimum found	N. iterations	Functions evaluations
f_1	9.46×10^1	151	264
f_3	1.43×10^3	744	1206
f_7	1.86×10^5	1672	2554

Observing Table 2, we see that the function $f_1(x,z)$ is the one with the least error, so this will be the best model. Since $f_1(x,z)$ is the best function it is going to be used throughout the optimization for the problem (2).

$$\min_z |f_1(x, z)| \tag{2}$$

By means of the response surface method, we determine the optimal coefficients of variable x solving the problem 1. After the determination of the optimal parameters obtained in problem 1, for which the vibrations are smaller, we will solve the problem 2 to identify the optimal parameters for the variable z . The Genetic Algorithm it was used to solve the problem 2.

The absolute value is presented (in problem 2), since represents the minimum value of the vibrations and this parameter cannot have negative values and needed to be closest to zero.

The experimental tests were carried out in the Laboratory of Mechanical Technology (LTM) of the Higher School of Technology and Management (ESTIG) of the Polytechnic Institute of Bragança (IPB) and the aim was to optimize the vibration values when machining with a CNC of cylindrical steel.

To evaluate the frequency of the system itself the tool impact hammer tests were carried out. After the tool was mounted to the machine quill, a uniaxial accelerometer was attached to the tool. The structure was excited and the frequency determined after an excitation made by the impact hammer as shown in Figure 1.

For the measurement of vibrations during machining a triaxial accelerometer connected to an acquisition plate was used. Treatment of the response was performed with the LabView software. The data were processed in order to obtain mean values at the desired operating / machining intervals. The cylindrical steel block (1.2738) that had initially the dimensions of 219 mm in diameter and 40 mm in height, composed of a very hard steel (45 Rockwell C of hardness). The tool inserts have the reference model of WNHU04T310 manufactured by Palbit®.

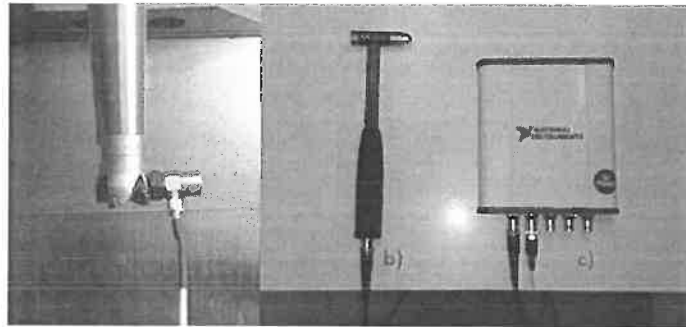


Fig. 1 - Instrumentation for measuring own frequencies (a) Accelerometer (b) PCB 86C03 and (c) NI 4431 USB.

To measure the vibrations produced during the milling process, a triaxial accelerometer (PCB Piezotronics, model 356B18), placed in the center of the machine axis, was used as close as possible to the cutting tool (Figure 2). The resulting accelerometer signal was obtained using an NI-4431 USB vibration signal acquisition board which was then processed through LabView. The values observed were the amplitude of vibration and the RMS in the measurement period.

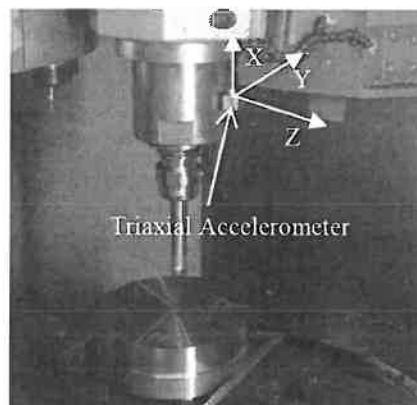


Fig. 2 - Positioning of the triaxial accelerometer to measure the vibrations during the tests.

RESULTS

In order to evaluate the natural machining tool, the impact was exerted with the hammer and the accelerometer was used to obtain natural tool frequency. The measurement detected natural frequencies at 99.97, 200, 297.33, 399.33 and 467.33 Hz. Knowing that during the tests the machine only operated in three different rotations, 2546, 2644 and 3820 rpm, that is, 42.41, 44.04 and 63.63 Hz, respectively. Analyzing Table 3 it is verified that there is no resonance because all values of the ratio are less than 1, so as already expected the machine tool set has a good rigidity.

In the Table 4 is represented the Root Mean Square (RMS) in two orthogonal directions, RMS_Y and RMS_Z , the M value represents the Euclidian norm of vector (RMS_Y, RMS_Z) , determined by:

$$M = \|(RMS_Y, RMS_Z)\| = \sqrt{(RMS_Y)^2 + (RMS_Z)^2}.$$

Table 3 - Measured frequencies

Mode	Frequency [Hz]	Ratio		
		42.41	44.04	63.63
1	99.97	0.42	0.44	0.64
2	200.00	0.21	0.22	0.32
3	297.33	0.14	0.15	0.21
4	399.33	0.11	0.11	0.16
5	467.33	0.09	0.09	0.14

Table 4 - The RMS in two orthogonal directions and respectively Euclidian norm

Test	Average		M
	RMS _y	RMS _z	
1	3.698	8.810	9.555
2	5.043	10.922	12.030
3	3.902	9.839	10.584
4	4.301	10.075	10.955
5	4.154	9.059	9.965
6	5.419	12.769	13.871
7	4.815	9.678	10.810
8	10.146	16.709	19.548
9	10.432	17.057	19.994
10	2.777	8.812	9.239
11	2.301	7.631	7.970
12	1.949	5.883	6.197
13	2.686	8.227	8.655
14	2.849	8.784	9.235
15	3.090	8.395	8.945
16	2.620	7.329	7.783

In order to identify the optimum value for z_1 , z_2 , z_3 and z_4 , that is, values of cutting speed (z_1), cutting federate (z_2), axial depth (z_3) and radial depth (z_4), where was used the function $f_1(x,z)$ and thirteen tests.

To execute the program through the matlab software, the function $f_1(x,z)$ was used in problem 1 and using thirteen (1,2,3,4,5,6,7,9,11,13,14,15,16) of the sixteen tests (these were randomly selected). In the verification tests (EV1, EV2) in Problem 1, it was solved by the Nelder-Mead method and in Problem 2 it was solved by the Genetic Algorithm method. A third verification test (EV3) was also performed, however, it was verified that the values obtained were very similar to those already in existence, and would therefore present similar vibration values to the tests already performed.

From the implementation of these problems resulted the input values and the vibrations presented in Table 5.

From the Table 5, is possible verify that for the verification tests EV1 and EV2 the values of RMS are very similar, 8.9 m/s² and 8.5 m/s², respectively and these values are very low compared with the random tests. So, for the present study, the response surface method using the Nelder-Mead and the Genetic Algorithm techniques proved to be a good optimization method for minimizing the vibration in milling process.

Table 5 - Vibrations obtained through verification tests and respective input parameters

Tests	z_1	z_2	z_3	z_4	z_5
1	2546	1018.4	0.1	2.0	9.6
2	2546	1018.4	0.1	4.0	12.0
3	2546	1018.4	0.4	2.0	10.6
4	2546	1018.4	0.4	4.0	11.0
5	2546	4584.0	0.1	2.0	10.0
6	2546	4584.0	0.1	4.0	13.9
7	2546	4584.0	0.4	2.0	10.8
9	3820	1018.4	0.1	2.0	20.0
11	3820	1018.4	0.4	2.0	8.0
13	3820	4584.0	0.1	2.0	8.7
14	3820	4584.0	0.1	4.0	9.2
15	3820	4584.0	0.4	2.0	8.9
16	3820	4584.0	0.4	4.0	7.8
EV1	2546	4440.7	0.1	2.0	8.9
EV2	2644	4272.5	0.3	2.0	8.5

CONCLUSION

The response surface method is an optimization method that could be used to optimize the milling parameters which minimize the vibrations during the machining process.

This method converges very quickly for optimal parameters which is an interesting optimization method because with less experimental tests it is possible to obtain good results.

With the Response Surfaces method, good vibration results were verified in the first two tests (EV1 and EV2) and the optimization process was stopped due to the values obtained being similar.

The values of RMS for EV1 and EV2 vibration tests are 8.9 m/s² and 8.5 m/s², respectively.

ACKNOWLEDGMENTS

The authors gratefully acknowledge the funding by PORTUGAL2020: SI I&DT Individual - Call 16/SI/2015 (Proj. n° 9703): "Automatização de Processos de Soldadura de Estruturas Hiperestáticas em Ligas de Alumínio (APSEHAL)".

REFERENCES

- [1] Aggarwal, A. and Singh, H. Optimization of machining techniques - A retrospective and literature review. *Sadhana*, 30 (2005), pp. 699-711.
- [2] Altintas, Y., Eynian, M. and Onozuka, H. Identification of dynamic cutting force coefficients and chatter stability with process damping. *CIRP Annals - Manufacturing Technology* 57 (2008), pp. 371-374.

- [3] Gopalsamy, B.M., Mondal, B. and Ghosh, S. Taguchi method and ANOVA: An approach for process parameters optimization of hard machining while machining hardened steel. *Journal of Scientific and Industrial Research* 68 (2009), pp. 686-695.
- [4] Grzesik, W. *Advanced Machining Processes of Metallic Materials: Theory, Modelling and Applications*. Elsevier BV, Oxford, 2008.
- [5] Makadia, J.M. and Nanavati, J.I. Optimisation of machining parameters for turning operations based on response surface methodology. *Measurement* (46) 2013, pp. 1521-1529.
- [6] Miguélez, M.H., Rubio, L., Loya J.A. and Fernández-Sáez, J. Improvement of chatter stability in boring operations with passive vibration absorbers. *International Journal of Mechanical Sciences* 52 (2010), pp. 1376-1384.
- [7] Palanikumar, K., Karunamoorthy, L., Karthikeyan, R. and Latha, B. Optimization of machining parameters in turning GFRP composites using a carbide (K10) tool based on the taguchi method with fuzzy logics. *Metals and Materials International*, (12) 2006, pp. 483-491.
- [8] Ribeiro, J., Lopes, H., Queijo, L. and Figueiredo, D. Optimization of Cutting Parameters to Minimize the Surface Roughness in the End Milling Process Using the Taguchi Method. *Periodica Polytechnica Mechanical Engineering* 61 (2017), pp. 30-35.
- [9] Santos, R.C. and Coelho, R.T. A contribution to Improve the Accuracy of Chatter Prediction in Machine Tools Using the Stability Lobe Diagram. *Journal of Manufacturing Science and Engineering*, 136 (2014), p. 21005.
- [10] Tobias, S. *Machine Tool Vibration*. Blackie and Sons Ltda, London, 1965.
- [11] Tzeng, C.-J., Lin, Y.-H., Yang, Y.-K. and Jeng, M.-C. Optimization of turning operations with multiple performance characteristics using the Taguchi method and Grey relational analysis. *Journal of Materials Processing Technology*, (209) 2009, pp. 2753-2759.
- [12] Wang, M., Zan, T., Yang, Y. and Fei, R. Design and implementation of non- linear TMD for chatter suppression: an application in turning processes. *International Journal of Machine Tools and Manufacture* 50 (2010), pp. 474-479.
- [13] Wang, X. and Jawahi, I.S. Web-based optimization of milling operations for the selection of cutting conditions using genetic algorithms. *Proceedings of the Institution of Mechanical Engineers, Part B: Journal of Engineering Manufacture* 218 (2004), pp. 647-655.