

PONDERAL EVOLUTION AND BODY COMPOSITION IN PATIENTS UNDERGOING SURGICAL TREATMENT OF OBESITY

Maria João Félix¹, Ana Maria Pereira^{1,2}, Paulo Mendes³

¹ Instituto Politécnico de Bragança, Campus Santa Apolónia, 5300-253, Bragança, Portugal.

² CIMO - Centro de Investigação de Montanha, Instituto Politécnico de Bragança, Portugal.

³ UND, Hospital Distrital Figueira da Foz, EPE, Coimbra, Portugal.



INTRODUCTION

The prevalence of obesity has been increasing worldwide, and bariatric surgery is one of the treatments of choice for severely obese individuals.

OBJECTIVE

To assess weight gain and body composition in patients undergoing surgical obesity treatment.

METHODOLOGY

Retrospective observational cohort study, which included 144 individuals undergoing bariatric surgery with follow-up appointments. Sociodemographic data, surgical procedure, and anthropometric data were analyzed statistically using the STATISTICA program, version 13.5.

RESULTS

Table 1-Characterization Sample

	Total
Age average (n)	41.7±10.6 (144)
Gender (%)	
F	123 (85.4%)
M	21 (14.6%)

✓ 36.8% of patients underwent Adjustable Gastric Banding

✓ 52.1% Vertical Gastrectomy

✓ 11.1% Adjustable Gastric Band Conversion to Vertical Gastrectomy.

Figure 1 - BMI Evolution Over Time

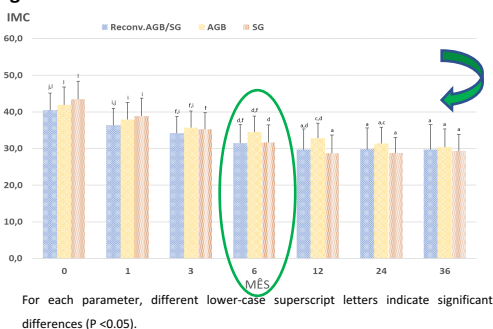


Figure 2 - "%PEP" Evolution Over Time

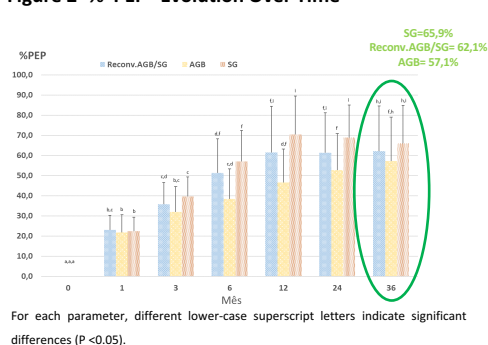
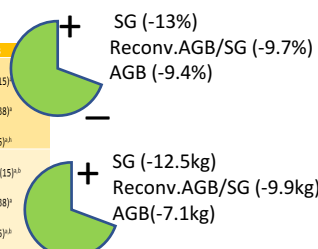


Table 2- Effect of surgery type on LM and % FM over time

	Preoperative	1 month	3 months	6 months	12 months	24 months	36 months
%FM (n)							
AGB	47.0±5.8 (19) ^a	41.0±5.7 (20) ^{ab}	41.9±6.1 (24) ^a	40.1±6.4 (18) ^{ab}	37.5±8.6 (20) ^{ab}	36.4±7.4 (17) ^a	37.6±6.5 (15)
SG	46.2±5.8 (41) ^a	44.7±6.2 (73) ^a	39.7±7.1 (73) ^a	34.9±8.8 (72) ^a	29.7±8.6 (67) ^a	31.4±8.8 (51) ^a	33.2±7.6 (38) ^a
Reconv.AGB/SG	46.4±5.8 (7) ^a	41.0±6.1 (16) ^{ab}	39.3±5.9 (16) ^a	36.5±7.6 (15) ^a	35.2±6.9 (15) ^{ab}	34.3±6.4 (9) ^a	36.7±6.5 (5) ^{ab}
LM, kg (n)							
AGB	58.7±12.0 (19) ^{ab}	56.1±9.7 (20) ^{ab}	55.1±11.2 (24) ^{ab}	55.8±10.9 (18) ^{ab}	52.1±9.3 (20) ^{ab}	51.0±9.7 (17) ^{ab}	51.6±10.6 (15) ^{ab}
SG	61.6±12.8 (41) ^a	55.0±9.6 (73) ^a	54.6±9.8 (73) ^a	52.5±9.8 (72) ^a	51.3±8.6 (67) ^a	49.5±7.0 (51) ^a	49.1±9.0 (38) ^a
Reconv.AGB/SG	58.9±5.8 (7) ^a	52.9±4.6 (16) ^{ab}	52.0±4.8 (16) ^a	52.1±5.3 (15) ^{ab}	50.3±5.8 (15) ^{ab}	49.5±4.8 (9) ^a	49.0±6.5 (5) ^{ab}



Results are given as the average values ± SD (Sample). For each parameter, different lower-case superscript letters indicate significant differences (P < 0.05). AGB- Adjustable Gastric Band ; kg- Kilograms; LM- Lean Mass; n- Sample; %FM- %Fat Mass; Recon.v.AGB/SG- Reconversion Adjustable Gastric Band to Gastric Sleeve; SG- Gastric Sleeve.

CONCLUSIONS

There was a BMI reduction in patients, especially those undergoing Vertical Gastrectomy, and in the first 6 months after surgery. There was also a decrease in the % fat mass and lean mass regardless of the surgical treatment.

BIBLIOGRAPHIC REFERENCES

American Society for Metabolic and Bariatric Surgery. (2016). Retrieved from <https://asmbs.org/patients/bariatric-surgery-procedures>

Cooiman, M. I., Aarts, E. O., Janssen, I. M. C., Hazebroek, E. J., & Berends, F. J. (2019). Weight Loss, Remission of Comorbidities, and Quality of Life After Bariatric Surgery in Young Adult Patients. *Obesity Surgery*, 29(6), 1851–1857.

Kavanagh, R., Smith, J., Avgenakis, E., Jones, D., & Nau, P. (2020). A Comparison of the Effects of Roux-en-Y Gastric Bypass and Sleeve Gastrectomy on Body Mass Composition as Measured by Air Displacement Plethysmography. *Obesity Surgery*, 30(2), 451–455.

Silva, L. B., Oliveira, B. M. P. M., & Correia, F. (2019). Evolution of body composition of obese patients undergoing bariatric surgery. *Clinical Nutrition ESPEN*, 31, 95–99.