

RECENT ADVANCES IN INTEGRITY-RELIABILITY-FAILURE

J.F. Silva Gomes, Shaker A. Meguid
Editors



*Proceedings of the 4th International Conference on Integrity, Reliability
and Failure, Funchal, Portugal, 23-27 June 2013*

Edições INEGI

IRF2013

RECENT ADVANCES IN
INTEGRITY-RELIABILITY-FAILURE

IRF2013

RECENT ADVANCES IN INTEGRITY-RELIABILITY-FAILURE

Editors

J.F. Silva Gomes and Shaker A. Meguid

Edições INEGI
(2013)

Published by
INEGI-Instituto de Engenharia Mecânica e Gestão Industrial
Rua Dr. Roberto Frias, 4200-465 Porto, Portugal
Tel:+351 22 957 87 10; Email: inegi@inegi.up.pt
www.inegi.up.pt

June, 2013

ISBN: 978-972-8826-27-7
Legal Deposit No: 358480/13

Printed by:
SERSILITO-Empresa Gráfica, Lda.
Travessa Sé e Melo, 209 - Apartado 1208, Gueifães 4471 Maia, Portugal
Tel: +351 229 436 920; Fax: +351 229 436 922/3
Email: administracao@sersilito.pt

Cover design by J.F. Silva Gomes (INEGI/FEUP)

All rights reserved. No part of this publication may be reproduced, stored in a retrieval system, or transmitted in any form or by any means, electronic, mechanical, optical, recording, or otherwise, without the prior written permission of the publisher.

TABLE OF CONTENTS

Preface	xxvii
International Scientific Committee	xxviii
Organizing Committee and Secretariat	xxix
Acknowledgments	xxx
List of Tracks and Symposia	xxxii
A. KEYNOTE PAPERS	1
3501-KP DYNAMIC CONTACT IN CONTINUA USING VARIATIONAL INEQUALITIES. Shaker A. Meguid.	3
3502-KP RECENT DEVELOPMENTS ON MPM AND ITS APPLICATION IN IMPACT AND EXPLOSION SIMULATION. Xiong Zhang.	5
3503-KP DESIGN FOR RELIABILITY AND MAINTAINABILITY. E.A. Elsayed.	7
3504-KP ULTRA LOW FRICTION OF AMORPHOUS CARBON NITRIDE WITH CONTROLLING NANO SURFACE STRUCTURE. Noritsugu Umehara.	9
B. TRACKS / MAIN TOPICS	11
TRACK_A: ANALYTICAL AND NUMERICAL TOOLS	13
3892 VIBROACOUSTICS OF NEW GENERATION AVIATION ENGINES AND FLIGHT SAFETY. V. Baklanov.	15
3895 PARAMETRIC EXCITATION OF PLATES WITH CUTOUTS. A.K.L. Srivastava.	17
3913 GAS TURBINE HEALTH CLASSIFICATION USING A HYBRIDIZED OPTIMIZATION ALGORITHM. Mike J.W. Riley, Michael Gallimore, Chris Bingham, Jill Stewart.	19
4512 VIBRATION MODAL ANALYSIS OF ROLLING ELEMENT BEARING. Elsayed S. Elsayed, Ahmed Elkhatib, Mostafa Yakout.	21
4660 RELIABILITY ESTIMATION OF AIRCRAFT STRUCTURAL COMPONENTS WITH SELECTED FAILURE MODELS. Józef Żurek, Henryk Tomaszek, Zbigniew Smalko, Mariusz Zieja.	23
4681 THE CALIBRATION OF NONLOCAL COUPLED DAMAGE-PLASTICITY MODEL FOR DUCTILE METAL ALLOYS. Alexander Korsunsky, Jonathan P. Belnoue.	25
4698 NEW CONCEPT DEVELOPMENT FOR CARRYING IDLERS MANUFACTURED THROUGH MECHANIC FORMING AND VALIDATED BY MATHEMATICAL MODELING. Gilmar C. Silva, Thiago H.A. Sousa, José R.G. Carneiro.	27
3922 BUCKLING AND POST-BUCKLING ANALYSIS OF THIN-WALLED STRUCTURES BASED ON LARGE ROTATION FIRST-ORDER SHEAR DEFORMATION THEORY. S. Q. Zhang, R. Schmidt.	29
3963 MATHEMATICAL MODELING OF A HIGH-SPEED DEFORMATION OF A VISCOPLASTIC PLATE. Volodymyr Hutsaylyuk, Heorhiy Sulym, Iaroslav Pasternak, Igor Turchyn.	31

4000	RADIAL ACOUSTIC OSCILLATIONS OF HOLLOW ANISOTROPIC SPHERICAL SHELL SUBMERGED IN LIQUID. Valery A. Polyakov.	33
4019	ANALYTICAL AND NUMERICAL SOLUTION FOR EXPANDABLE TUBULAR. Abdullah M. Al Shabibi, Jamil Abdo.	35
4096	FLEXURAL CAPACITY OF RC PLATES WITH DIFFERENT REINFORCEMENT RATIOS USING ANSYS. Khaled Heiza, Mounir Soliman, Mohamed Kandel.	37
4732	CLAY CRACKS EFFECT ON SLOPE STABILITY: NUMERICAL INVESTIGATION. H. Trabelsi, B.A. Rahma, M. Jamei, G. Houda.	39
3883	COLLAPSE PREVENTION DESIGN CRITERIA FOR MOMENT CONNECTIONS IN MULTI-STORY STEEL FRAMES UNDER EXTREME ACTIONS. Dan Dubina, Florea Dinu, Ioan Marginean.	41
3955	RELIABILITY ASSESSMENT OF STRUCTURES WITH MIXED UNCERTAINTIES. B.N. Rao, A.S. Balu.	43
4048	FRAMEWORK PROPOSAL TO SUPPORT THE INTEGRATION OF RISK MANAGEMENT AND BUSINESS CONTINUITY MANAGEMENT. Matheus P. Ladario, José R. Farias Filho, Gilson B.A. Lima.	45
4633	NUMERICAL DESIGN AND MECHANICAL PERFORMANCE OF INJECTED MOLDED CARBON FIBER/PEEK GEARS. Lucas Sanchez Fellay, Martín Machado, Zoltan Major, Patricia Frontini.	47
4664	DEVELOPMENT OF AN EXCEL-BASED CALCULATION TOOL FOR INTERACTION CURVES OF RECTANGULAR CONCRETE COLUMNS SUBJECTED TO FIRE. L. J. Wang, R. Caspeele, L. Taerwe.	49
TRACK B: TESTING AND DIAGNOSTICS		51
4710-IP	THERMOMECHANICAL ANALYSIS OF SHAPE MEMORY POLYURETHANE. Elzbieta Pieczykyska, Hisaaki Tobushi, Shunichi Hayashi, Michal Maj, Katarzyna Kowalczyk-Gajewska, Maria Staszczak, Mariana Cristea. (Invited Paper)	53
3875	LASER-BASED DESTRUCTIVE AND NONDESTRUCTIVE TESTING OF MECHANICAL PROPERTIES OF SILICON. Peter Hess, Alexey M. Lomonosov.	55
3879	INVESTIGATION OF THE GRANULAR SULPHUR FLOW-ABILITY TO MODIFY THE DESIGN OF GRANULATION UNIT. Roya Moradifar, Mohammad H. Kadivar, Eshagh Saharkhiz.	57
3912	INITIAL ATTEMPTS TO ENHANCING RUBBER SEALS QUALITY AND RELIABILITY. Achim Frick, Nouran Kaoud, Andrea Tomp.	59
3938	CHARACTERIZATION OF ALUMINIUM ALLOY CAPACITOR DISCHARGE JOINTS USING NON DESTRUCTIVE AND MECHANICAL TESTING. A.P. Carofalo, V. Dattoma, F. Palano, F.W. Panella.	61
3954	DEVELOPMENT ON MEASUREMENT TECHNOLOGY OF AXIAL LOAD IN TRUSS STRUCTURE MEMBER BY IMPACT SOUND. Tsutomu Yoshida, Mohd Z.B. Ismail, Takeshi Watanabe.	63
3972	SMALL SPECIMEN CREEP TESTING AND APPLICATION FOR POWER PLANT COMPONENT REMAINING LIFE ASSESSMENT. Wei Sun, Tom H. Hyde, Steve J. Brett.	65
3987	PHASE MORPHOLOGY AND TOUGHNESS RESEARCH OF TWO STEELS USED FOR PIPELINE AND VESSEL INDUSTRY AFTER INTERCRITICAL HEAT TREATMENT. Xiaochen Song, Valdir A. Guimarães.	67
3996	DESIGN OF A SYSTEM FOR FUEL ELEMENTS CLADDING INSPECTION OF A NUCLEAR RESEARCH REACTOR. Rogerio R. Rodrigues, Amir Z. Mesquita.	69

4004	FAULT PROGNOSTICS USING AN ARIMA-BASED PREDICTION COMBINED WITH A CASE-BASED REASONING METHODOLOGY. Ícaro Viana, Guilherme Rocha, Luís C.S. Góes.	71
4017	INFLUENCE OF MECHANICAL PARAMETERS ON WAVE EFFECTS OF PLASTIC YIELDING LOCALIZATION OF ALUMINIUM-MAGNESIUM ALLOY: THE APPLICATION OF DIGITAL IMAGE CORRELATION. Tatiana Tretiakova, Valery Vildeman.	73
4023	CONDITION MONITORING OF HEAVY DUTY GAS TURBINE STATIONARY AND ROTARY BLADES. Maryam Torfeh, Saeed Asadikouhanjani, Reza Ghorbani.	75
4025	STRAIN SOFTENING OF MATERIALS IN TENSION-TORSION TESTS. Mikhail Tretyakov, Valeriy Vildeman.	77
4037	AUTOMATION OF MECHANICAL FAULTS DIAGNOSIS OF ROTATING MACHINES BY APPLICATION OF THE FUZZY LOGIC (LF). Fateh Harrouche, Ahmed Falkaoui.	79
4053	RESIDUAL STRESS MANAGEMENT: INDUSTRIAL APPLICATIONS. Jacob Kleiman, Yuri Kudryavtsev.	81
4707	RESIDUAL STRESSES, MICROHARDNESS AND MICROSTRUCTURE IN FLUX CORED ARC WELDING SUPERDUPLEX STAINLESS STEEL PIPES. Cleiton C. Silva, Marcelo F. Motta, Hélio C. Miranda, Giovanni Dalpiaz, Ricardo R. Marinho, Maria P.C. Fonseca.	83
4105	DEGRADATION OF PRINTABLE OPTICAL FILTERS FOR VISIBLE OPTICAL COMMUNICATION. Maria Relvas, Maria R. Ferreira, Paulo S. André.	85
4641	THE FAULT DIAGNOSIS OF ROTATING MACHINERY BASED ON FUZZY INTERERENCE MODEL. Congxiao Zhou, Xiuzhong Xu.	87
4647	ULTRASOUND METHODOLOGIES FOR DEFECTS DETECTION AND STRUCTURAL INTEGRITY VALIDATION OF FSW JOINTS. Jaime Santos, Mário Santos, Ana C.F. Silva, Daniel F.O. Braga, Pedro M.G.P. Moreira.	89
4088	WAVELET NOISE FUNCTION AND REGRESSION ANALYSIS FOR ULTRASONIC NDT MATERIAL CHARACTERIZATION. Fairouz Bettayeb.	91
4652	VIBRATIONS DETECTION AND ANALYSIS IN EQUIPMENTS WITH MCUSUM CHARTS AND FREQUENCIES GRAPHS. Suzana Lampreia, Valter Vairinhos, José Dias, José Requeijo.	93
3906	DETECTION OF BURIED OBJECTS BY ACTIVE INFRARED THERMOGRAPHY METHOD IN DISADVANTAGEOUS ATMOSPHERIC CONDITIONS. Waldemar Swiderski.	95
4666	MECHANICAL BEHAVIOR OF Al-VIIIb-IVa TRYMETALLIC ALLOY. S. Valdez, S.R. Casolco, R.A. Rodríguez-D.	97
4672	AN AUTOMATED METHOD FOR THE MEASUREMENT OF FATIGUE CRACKS PROGRESSION. Paulo J. Tavares, Pedro M.G.P. Moreira.	99
4742	MECHANICAL BEHAVIOUR OF POLYETHYLENE FOAM SANDWICH PANELS UNDER COMPRESSION LOADING. Antonio Boccaccio, Caterina Casavola, Luciano Lamberti, Carmine Pappalettere.	101
4758	UTILIZING RFM AND CONDITION MONITORING TO ENHANCING PROCESS SAFETY. Soliman A. Mahmoud.	103
4713	SIF DETERMINATION USING IMAGE PROCESSING TECHNIQUES. Paulo J. Tavares, Pedro M.G.P. Moreira.	105

TRACK_C: SURFACE AND INTERFACE ENGINEERING 107

3893	INFLUENCE OF THE POISSON'S RATIO ON FRACTURE PARAMETERS IN FUNCTIONALLY GRADED MATERIALS. Emilio Martínez-Pañeda, Rafael Gallego.	109
3908	INFLUENCE OF SHOT PEENING ON THE FATIGUE RESISTANCE OF ALUMINUM ALLOY AA 7175-T74. Thiago A. Minto, Midori Y. Pitanga, Maria Odila H. Cioffi, Maria Cindra Fonseca, Herman J.C. Voorwald.	111
4008	EVALUATION OF SHOT PEENING ON THE FATIGUE STRENGTH OF CUSTOM 465 STAINLESS STEEL FOR AERONAUTIC APPLICATION. Rafael G. Bonora, Herman J.C. Voorwald, Maria Odila H. Cioffi.	113
3932	COATINGS SUPPORTED ON FECCRALLOY: LINKS BETWEEN SURFACE TREATMENT, PARTICLE SIZE & COATING PROPERTIES. Stephen Adegbite.	115
3939	EFFECT A WEAK MAGNETIQUE FIELD AND IMPOSED POTENTIAL ON CORROSION BEHAVIOR OF ALUMINIUM WIRE (AA1370). Rabeh Slimani, Nacer Zazi, Ali Bilek, J.P. Chopart.	117
4052	THE DIFFERENCE BETWEEN CORROSION BEHAVIORS OF PERPENDICULAR ROLLING SURFACE AND THE ROLLING SURFACE AFTER HOMOGENISATION ANNEALING OF AA5083-H321 ALLOY. Nacer Zazi, J.P. Chopart, Ali Bilek.	119
4629	EFFECT OF PROCESSING PARAMETERS ON THE SURFACE INTEGRITY OF THE 316 L STAINLESS STEEL TREATED BY SURFACE MECHANICAL ATTRITION TREATMENT (SMAT). T. Grosdidier, Y.A. Samih, B. Beaussir, N. Alain-Bonasso, B. Bolle.	121
4784	DRY SLIDING WEAR BEHAVIOR OF CRYOGENIC TREATED GEARS MANUFACTURED BY POWDER METALLURGY. Vahid Abouei Mehrizi, Mohammad Talafi Noghani, Nassim Sharafi, Amin Moradi.	123
4749	ZINC OXIDE THIN FILMS DEPOSITED BY SPRAY PYROLYSIS TECHNIQUE : EFFECT OF THE SUBSTRATE TEMPERATURE ON THE PHYSICAL PROPERTIES. T. Mahdaoui, A.R. Madjoubi, C. Bousbaa, N. Bouaouadja, J.M. Albella.	125

TRACK_D: CIVIL ENGINEERING APPLICATIONS 127

3880	BUILDING FAÇADE PERFORMANCE IN THE LORCA EARTHQUAKE AND RETROFIT SOLUTIONS. J. C. López-González, J. Fernández-Gómez, R. Álvarez-Cabal.	129
3946	INFLUENCE OF MASONRY INFILL WALLS OVER RESISTANT CAPACITY OF BUILDINGS. Lucía Sánchez, Gracia L. Ramón Álvarez.	131
4103	FRACTURE ASSESSMENT AND RELIABILITY ANALYSIS OF CAST IRON WATER PIPE. Ni Yanling, Chun Qing Li.	133
4165	ULTRA-HIGH PERFORMANCE PLASTER (UHPP) FOR SEISMIC REINFORCEMENT OF MASONRY WALLS. João A. Guerreiro, João G. Ferreira, António S. Gago.	135
4100	DYNAMIC STRUCTURAL HEALTH MONITORING OF A CIVIL ENGINEERING STRUCTURE WITH A POF ACCELEROMETER. Paulo Antunes, João Dias, Humberto Varum, Paulo André.	137
4497	CHARACTERISATION OF THE BEHAVIOUR OF HIGH PERFORMANCE MORTAR SUBJECTED TO HIGH TEMPERATURES. S. Djaknoun, E. Ouedraogo, A. Ahmed Benyahia.	139
4033	IDENTIFICATION OF THERMAL CHARACTERISTICS OF BUILDING MATERIALS AT HIGH TEMPERATURES. Jiří Vala, Petran Jarošová.	141

4044	DEFLECTION DUCTILITY INDEX IN CONTINUOUS REINFORCED CONCRETE BEAMS AND SLABS. José Santos, A. Abel Henriques.	143
4050	CONCRETE STRUCTURES WITH EXTERNALLY BONDED REINFORCEMENT - STRUCTURAL FIRE DESIGN AND FIRE PROTECTION. Piotr Turkowski.	145
4079	FRACTURE OF CONCRETE REINFORCED WITH STEEL FIBERS IN NORMAL AND AGGRESSIVE ENVIRONMENT. Raimundo E. Vasconcelos, Itamar Ferreira.	147
3957	CRACKING STUDY OF A REINFORCED CONCRETE BEAM. Miguel S. García García, Ismael S. Ramos, Omar Ait-Salem Duque, María Consuelo Merodio.	149
4068	SUPERABSORBENT POLYMERS TO MITIGATE AUTOGENOUS SHRINKAGE OF HIGH STRENGTH CONCRETES. Eugénia Silva, Anne Lopes, Romildo Tolédo Filho, Danilo Pereira, Vinícios Matos.	151
4020	LONG-TERM RELIABILITY OF CARBON FIBER REINFORCED POLYMERS IN CIVIL CONSTRUCTION. Urs Meier.	153
3994	PLASTIC HINGES IN COMPOSITE STEEL-CONCRETE BEAMS SUBJECTED TO BENDING. Senila R. Mihai, Petran Ioan.	155
4001	A MAGNETIC APPROACH TO THE IDENTIFICATION OF EFFECTIVE CHARACTERISTICS OF METAL FIBRE COMPOSITES USED IN CIVIL ENGINEERING. Jiří Vala, Tereza Grohová.	157
3950	DURABILITY PREDICTION OF RANDOMLY CORRODED SIDE SURFACE SHEET IN STEEL ON THE GROUND TANK FOR LIQUID FUEL STORAGE. Mariusz Maślak, Janusz Siudut.	159
3862	ANALYSES OF STIFFNESS DEGRADATION EFFECTS DUE TO LOW CYCLE FATIGUE DAMAGE IN METALLIC STRUCTURES. Mohammad Saranik, Louis Jézéquel, David Lenoir.	161
4779	DEVELOP TAILORED MANUFACTURING SAFE METHODS FOR WIND TOWERS ERECTED IN REMOTE AREAS BASED ON AN INTEGRATED TOWER CONCEPT AND OPTIMAL USE OF HIGH STRENGTH STEELS-SAFETOWER. E. Dias Lopes, Peter Bartlam, Peter Schaumann, Malte Gottschalk, Eurico Assunção.	163
3920	WIND MEASUREMENTS ALONG A HIGH-VOLTAGE OVERHEAD TRANSMISSION LINE IN NORTHERN GERMANY. Dominik Stengel, Milad Mehdiانpour.	165

TRACK_E: SENSORS AND INSTRUMENTATION 167

4683	FBG SENSORS APPLICATION FOR RESIDUAL STRESS MEASUREMENT USING THE HOLE DRILLING METHOD. Daniel F. O. Braga, Ana C.F. Silva, Nuno Viriato, João Ribeiro, Pedro M.G.P. Moreira.	169
4107	TIME TO FAILURE OF BEND INSNSITIVE OPTICAL FIBER UNDER SMALL BEND DIAMETERS. Fátima Domingues, Paulo André.	171
3874	LASER EXCITATION AND DETECTION OF 1D WEDGE WAVES AND THEIR APPLICATIONS IN SENSORS AND ACTUATORS. Peter Hess, Alexey M. Lomonosov.	173
3918	A VIBRATION DETECTION SYSTEM BASED ON FIBER SENSOR AND SIGNAL PROCESSING WITH WAVELET TRANSFORM. Dairo Palomino, Leonardo Diaz, Fabio Veja, Cesar O. Torres.	175
3943	HEAT TRANSFER IN CUTTING TOOL DURING MACHNING LIKE MILLING. THEORY AND EQUIVALENT THERMAL CIRCUIT. Farida Benabid, Hocine Benmoussa, Mohamed Arrouf, Mekki Assas.	177
4694	TECHNICAL NOTE: A PROPOSAL FOR THE AUTOMATIC DETECTION OF FAILURES IN THE AIRCRAFT INSTRUMENTATION WITHOUT SENSOR DUPLICATION. J. Barahona Fonseca.	179

TRACK_F: TRIBOLOGY, GEARS AND TRANSMISSIONS		181
4038	A SIMULATION OF POLYMER GEAR CONTACTS WITH SHRINKAGE EFFECTS. Wei Li, Geoff Small, Ken Mao.	183
4085	DIAGNOSIS OF GEAR SYSTEM WITH SENSITIVE INDICATORS. Ishak Touafek, Ahmed Felkaoui, Hafida Mahgoun, Nassira Laissani.	185
4108	PHOTOELASTIC AND NUMERICAL ANALYSIS OF STRESSES DEVELOPED IN GEAR TEETH AND NUMERICAL ANALYSIS OF TWO ORTHOGONAL CYLINDERS IN CONTACT. A. Bilek, M. Beldi, S. Larbi, S. Djebali.	187
4753	RELIABILITY OF WORN COMPLIANT JOURNAL BEARINGS. Evgeny Kuznetsov, Sergei Glavatskih.	189
4240	GEARBOX FAULT DETECTION USING A NEW DENOISING METHOD BASED ON ENSEMBLE EMPIRICAL MODE DECOMPOSITION AND FFT. Hafida Mahgoun, Rais.Elhadi Bekka, Ahmed Felkaoui.	191
TRACK_G: MECHANICAL DESIGN AND PROTOTYPING		193
4034	A NEW MATERIALS DESIGN CONCEPT AND PROCESS PRINCIPLES FOR LOW WEIGHT STRUCTURAL COMPONENTS. Filipe Silva, Paulo J. Pinto, Nuno Peixinho.	195
4062	A FRAMEWORK FOR INTERACTING WITH ARTIFICIAL SYSTEMS. Peer M. Sathikh, S.G. Lee.	197
3863	THE INFLUENCE OF CONTOURING ON THE TENSILE STRENGTH OF FUSED DEPOSITION MODELLING PROCESSED PARTS. Dario Croccolo, Massimiliano De Agostinis, Giorgio Olmi.	199
3989	OPTIMAL PIEZOELECTRIC ACTUATION IN COMPOSITE STRUCTURES. Aleksander Muc, Piotr Kędziora.	201
4785	EFFECT OF COOLING RATE ON HYDROGENATION PROPERTIES OF HYDROGEN STORAGE MATERIAL FOR AUTOMOTIVE APPLICATION. Vahid Abouei Mehrizi, Sina Haji Taheri, Amir S.R. Nojehdchi.	203
4686	DETERMINATION DYNAMIC CHARACTERISTICS OF ROADHEADERS BOOM WITH CUT HEADER. Arkadiusz Mężyk, Wojciech Klein, Mariusz Pawlak, Jan Kania.	205
3995	INFLUENCE OF SINTERING TEMPERATURE ON THE STRUCTURAL AND DIELECTRIC PROPERTIES OF BST OBTAINED BY COLLOIDAL PROCESSING. P. V. Antunes, Susana Olhero, Ajay Kaushal, Jorge Lino, J.M.F. Ferreira.	207
3998	MANUFACTURING CERAMIC SHELLS FOR CASTING TITANIUM COMPONENTS. Teresa P. Duarte, Rui J.L. Neto, Rui Félix, Jorge Lino, Bruno Robrigues, Tarsis Barbosa.	209
3977	DEVELOPMENT OF DIDACTIC EQUIPMENT FOR IN-CLASS EXPERIMENTAL ANALYSIS OF BEAM BENDING. Nuno Peixinho, Pedro Correia.	211
TRACK_H: MODES OF FAILURE		213
3882	EFFECT OF CONNECTION BETWEEN REINFORCED CONCRETE SLAB AND STEEL BEAMS IN MULTI-STORY FRAMES SUBJECTED TO DIFFERENT COLUMN LOSS SCENARIOS. Florea Dinu, Dan Dubina, Ioan Marginean.	215
3926	FULL RANGE FATIGUE LIFE ESTIMATION METHOD USING CRITICAL DISTANCE STRESS THEORY. Muhammad A.B. Wahab, Toshio Hattori, Minoru Yamashita.	217

3929	TRUNK MAINS FAILURES: THE EFFECT OF CORROSION ON RESIDUAL PIPE STRENGTH. Stephen Adegbite, Azadeh Fahimi, Tim Evans, Jeff Farrow, David Jesson, Mike Mulheron, Paul Smith.	219
3944	THE INFLUENCE OF LOCALISED PIT DISTRIBUTION ON THE ULTIMATE STRENGTH OF SHIP STRUCTURAL MEMBERS. Y. Wang, J.A. Wharton, R.A. Sheno. I.	221
3961	INTELLIGENT DIAGNOSTICS AND PROGNOSTICS FOR INDUSTRIAL MACHINES USING AN OPTIMIZATION APPROACH. Michael Gallimore, Mike J.W. Riley, Chris Bingham, Zhijing Yang, Yu Zhang.	223
3982	INFLUENCE OF ANODIZING TREATMENT ON FATIGUE RESISTANCE OF TI-6AL-4V TITANIUM ALLOYS. Eric Vermesse, Catherine Mabru, Laurent Arurault.	225
3983	EFFECT OF LUBRICITY OF DRILLING FLUIDS ON BUCKLING OF COILED TUBING IN DRILLING OPERATIONS. Danish Hancef, Jamil Abdo, Abdullah Al-Shabibi.	227
3986	INFLUENCE OF PRE-COMBINED LOADING ON MECHANICAL PROPERTIES AND FRACTURE MECHANISM OF ALUMINUM ALLOY 2024-T3. Volodymyr Hutsaylyuk, Mykola Chausov, Lucjan Śnieżek, Tomasz Słzak, Andrii Pylypenko, Valentin Berezin.	229
4064	DESIGN FOR ROBUSTNESS OF MULTI-STOREY REINFORCED CONCRETE FRAME STRUCTURES UNDER EXTREME LOADS. Ioan Petran, Mihai Senila.	231
4099	BEHAVIOR AND ANALYSIS OF SELF COMPACTED CONCRETE DEEP BEAMS REINFORCED BY CFRP BARS. Khaled Heiza.	233
4367	CORROSION STUDY OF SOME STAINLESS AND CARBON STEELS FOR STRUCTURAL APPLICATIONS. Rui A. Silva, Pedro R. Soares, António A. Crispim.	235
4720	TENSILE MECHANICAL BEHAVIOUR OF AERONAUTICAL 2024 AND 2198 ALUMINUM ALLOYS AFTER CORROSION EXPOSURE. Zoi S. Metaxa, Nikolaos D. Alexopoulos, Paraskevas Papanikos, Constantinos Stergiou.	237
4727	MAINTENANCE IN INDUSTRIAL EQUIPMENT: FAILURE INVESTIGATION IN A STAMPING PRESS THROUGH A RELIABILITY ANALYSIS. Luiz H. Sbardelotto, Jairo J.O. Andrade.	239
4728	TENSILE HARDENING BEHAVIOUR AND FRACTURE TOUGHNESS OF AERONAUTICAL 2198-T351 ALUMINUM ALLOY. Stavros K. Kourkoulis, Nikolaos D. Alexopoulos, Zoi S. Metaxa.	241
TRACK_I: COMPOSITE MATERIALS		243
4757-IP	AN EFFECT OF NON-HOMOGENEOUS FIBRE PACKING ON MECHANICAL PROPERTIES OF OXIDE/NICKEL COMPOSITES. S.T. Mileiko, N.I. Novokhatskaya, V.M. Kiiko, A.A. Kolchin. (Invited Paper)	245
3936	INNOVATIVE REVERSIBLE ASSEMBLING TECHNOLOGIES BASED ON ELECTROMAGNETICALLY-ACTIVE ADHESIVES. Romeo Ciobanu, Cristina Schreiner, Brunetto Martorana, Giovanni Belingardi.	247
3960	EVALUATION OF DAMAGE ACCUMULATION IN HIGH PRESSURE COMPOSITE VESSELS USING FIBER OPTIC SENSORS. Wojciech Błażejowski, Paweł Gąsior, Jerzy Kaleta.	249
3970	HIGH POWER INTERACTIVE ACTUATOR SYSTEM BASED ON MAGNETOSTRICTIVE COMPOSITE CORE. Jerzy Kaleta, Rafal Mech, Przemyslaw Wiewiorski.	251
3973	DEVELOPMENT OF TEXTILE COMPOSITE STRUCTURES FROM AMAZON LATEX. MECHANICAL AND THERMAL ANALYSIS. Edilaine Garcia, Maria José Geraldes.	253

3980	COMPOSITE MANUFACTURING OF NATURAL RUBBER AMAZON - ANALYSIS OF MECHANICAL RESISTANCE AND ABRASION RESISTANCE. Edilaine Garcia, Maria José Geraldes.	255
4013	A MECHANICAL ANALYSIS OF POLYDICYCLOPENTADIENE WITH METAL INSERTS THROUGH FLEXURAL LOAD. André Camboa, Bernardo Ribeiro, João Nunes, Jorge Lino.	257
4714	EFFECT OF PET FUNCTIONALIZATION IN COMPOSITES BASED ON TIRE RUBBER AND PLASTIC MATERIALS. Cristina Cazan, Mihaela Cosnita, Anca Duta.	259
4022	PROPOSED ABOUT USE OF RECYCLED MATERIAL IN A AUTOMOTIVE COMPONENT EXTERNAL WHEEL BOX. Gilmar C. Silva, Fabíola P. Lozada, José R.G. Carneiro.	261
4055	STUDY OF SHORT COLUMNS CONFINED CONCRETE. Marianna L.S. Rivetti, Wayne S. Assis, Severino P.C. Marques.	263
4075	PROCESSING AND MECHANICAL EVALUATION OF ALUMINIUM COMPOSITES REINFORCED WITH CARBON NANOTUBES. O. Carvalho, G. Miranda, D. Soares, F.S. Silva.	265
4077	ELASTIC AND INELASTIC PROPERTIES OF METAL-PORCELAIN COMPOSITES APPLIED TO FUNCTIONALLY GRADED METAL-CERAMIC DENTAL RESTORATIONS. Bruno Henriques, Delfim Soares, Filipe Silva.	267
4097	BEHAVIOUR AND ANALYSIS OF CONCRETE BEAMS REINFORCED BY CFRP RODS. Khaled Heiza.	269
4632	STUDY ON DAMAGE MODES OF A SANDWICH PANEL IMPACTED REPEATEDLY. Krimo Azouaoui, Said Mouhoubi.	271
4638	IMPACT DAMAGE MONITORING IN CFRP LAMINATES USING ULTRASONIC AND IR THERMOGRAPHY. D.P. Myriounis, T. Barron.	273
4639	WEAR BEHAVIOUR OF ALUMINIUM BASED MMC USED IN BRAKE DISCS. D.P. Myriounis, S.T. Hasan.	275
4662	MECHANICAL ANALYSIS OF NATURAL JUTE FIBRES AND POSSIBLE APPLICATION OF THERMOSETTING RESIN COMPOSITES. João Rocha, Luís Queijo.	277
4668	AMPLITUDE AND TIME SHIFT MEASUREMENTS FOR DAMAGE CHARACTERIZATION IN FIBERGLASS COMPOSITES USING PZT SENSORS. Mário Santos, Jaime Santos, Ana Amaro.	279
4670	MANUFACTURING AND PERFORMANCE TESTS OF COMPOSITE STRUCTURES BASED ON THERMOPLASTIC MATRICES WITH EMBEDDED PIEZOCERAMIC ACTUATORS. Werner Hufenbach, Niels Modler, Anja Winkler, Tony Weber, Martin Dannemann.	281
4709	APPLICATION OF NOVEL COMPOSITE ALLOY FOR IMPROVING RELIABILITY, DURABILITY AND FUNCTIONAL PROPERTIES OF COMBUSTION ENGINE. Antoni Jankowski, Zbigniew Smalko, Jozef Zurek, Zenon Slawinski.	283
4021	THE INFLUENCE OF CAO ADDITION AND PROCESSING TEMPERATURE ON MECHANICAL PROPERTIES OF RECYCLED RUBBER, PET AND WOOD BASED COMPOSITES. Mihaela Cosnita, Cristina Cazan, Anca Duta.	285
4717	FINITE ELEMENT PREDICTION OF MECHANICAL BEHAVIOUR UNDER BENDING OF HONEYCOMB SANDWICH PANELS. Sid-Ali Kaoua, Krimo Azouaoui.	287
4718	MECHANICAL BEHAVIOR OF A TUBULAR COMPOSITE STRUCTURE UNDER THE EFFECTS OF A COMBINED LOADING. Mansur Celebi, Halit S. Turkmen.	289

4721	FINITE ELEMENT MODELLING OF THE SHEAR STRESS DISTRIBUTION OF EMBEDDED POLYVINYL ALCOHOL - CARBON NANOTUBE FIBERS IN GLASS FIBER REINFORCED COMPOSITES. Paraskevas Papanikos, Ilias Tapeinos, Stavros K. Kourkoulis, Nikolaos D. Alexopoulos.	291
3935	MODELLING THE PULLOUT OF HOOKED STEEL FIBERS FROM CEMENTITIOUS MATRIX. Edmunds Zile, Olga Zile.	293
4760	STOCHASTIC BUCKLING AND FAILURE ANALYSIS OF LAMINATED COMPOSITE PLATE. Appaso M. Gadade, Achchhe Lal, B.N. Singh.	295
4071	STATIC AND DYNAMIC PROPERTIES OF HYBRID COMPOSITE BEAMS. Jiří Had, Milan Růžička, Pavel Steinbauer, O. Uher, Viktor Kulíšek.	297
TRACK_J: NANOTECHNOLOGIES AND NANOMATERIALS		299
3876	DNA OLIGOMER SEQUENCE SPECIFIC ELECTRICAL RESPONSE OF ULTRALONG PARALLEL CNTFET TO DOPAMINE. S.V. Hari Krishna, Na Jianing, Zheng Lianxi.	301
3877	DIELECTRIC ANALYSIS OF INTEGRITY IN POLYPROPYLENE - NANOCARBON COMPOSITES. Vitaliy G. Shevchenko, Sergey V. Polschikov, Polina M. Nedorezova, Alla N. Klyamkina, Alexander M. Aladyshv, Anatoliy T. Ponomarenko.	303
3921	MEASUREMENT OF ENERGY LOSS COEFFICIENT OF ELECTROSTATICALLY ACTUATED MEMS RESONATORS. Marius Pustan, Cristian Dudescu, Corina Birleanu.	305
3984	HIGH TEMPERATURE AND HIGH PRESSURE NANOCCLAY MODIFIED DRILLING FLUIDS. Jamil Abdo, Danish Hancef, Abdullah Al-Shabibi.	307
3991	HYBRID CARBON-POLYMER COMPOSITES FOR MEDICAL APPLICATIONS. Romeo Ciobanu, Cristina Schreiner, Gabriel Dimofte, Thomas Schreiner.	309
4015	NEW MATERIALS FOR ENERGY AND TRANSPORT IN THE NORTH. Valeriy Lepov, Nikolay Petrov, Sergey Bardakhanov, Sergey Sysolyatin, Anatoly Kychkin.	311
4030	QUALITATIVE INTERPRETATION OF CARBON NANOTUBE BY USING THE MODELLING OF ATOMIC CHAIN AS A COSSERAT CURVE. Yu Zhang, Carlo Sansour, Christian Bingham.	313
4032	MODELLING OF BUCKLING OF SINGLE-WALLED CARBON NANOTUBES BASED ON COSSERAT SURFACE THEORY. Yu Zhang, Carlo Sansour, Chris Bingham.	315
4058	CNT AGGLOMERATES SIZE AND DISTRIBUTION INFLUENCE ON ALUMINUM COMPOSITES STRENGTH. O. Carvalho, G. Miranda, D. Soares, F.S. Silva.	317
4073	HARMONIC OSCILLATIONS OF NANOSIZE PIEZOELECTRIC BODIES WITH SURFACE EFFECTS. Andrey V. Nasedkin, Victor A. Eremeyev.	319
4663	ELASTOPLASTIC MODELLING OF DAMAGE IN POLYMER-CLAY NANOCOMPOSITES WITH EVOLUTIONARY PARTICLE DEBONDING. Ammar Mesbah, Fahmi Zaïri, Moussa Naït-Abdelaziz, Jean-Michel Gloaguen, Krimo Azouaoui.	321
4719	POLYVINYL ALCOHOL - CARBON NANOTUBE FIBERS RESPONSE UNDER PROGRESSIVE DAMAGE ACCUMULATION TENSILE TESTS. Stavros K. Kourkoulis, Nikolaos D. Alexopoulos.	323
TRACK_K: BIOMECHANICAL APPLICATIONS		325
3868	DEVELOPMENT OF CUSTOM PROSTHESES USING INCREMENTAL SHEET FORMING AND RAPID PROTOTYPING. Jovani Castelan, Daniel Fritzen, Anderson Daleffe, Lirio Schaeffer, Ana Reis.	327

3992	A MECHANICAL ANALYSIS OF BIODEGRADABLE NANOCOMPOSITES FOR ACL REPLACEMENT MEDICAL DEVICE. Viviana C. Pinto, José Xavier, Artur Pinto, Fernão D. Magalhães, Rui M. Guedes.	329
4040	AN APPROACH ON ARTHRITIS HIP SURFACE RESHAOING USING FINITE ELEMENT METHOD. Wei Li, Sarah Wayte, Damian Griffin, Derek Chetwynd, Ken Mao.	331
3867	CHARACTERIZATION OF THE KINEMATICS RESPONSE AND ELECTROMIOGRAPHIC DYNAMICS OF WALKING AND RUNNING SHOES WITH DIFFERENT LEVELS OF WEAR. Alberto Graziano.	333
3870	CORRELATION STUDY BETWEEN THE EXPLOSIVE FORCE OF THE LOWER LIMBS AND THE KINEMATI PARAMETERS DURING THE SUSPENDED LAUNCH IN BASKETBALL. Anicencio Fabião, Alberto Graziano.	335
3985	MUSCLE ACTIVATION AND THREE-DIMENSIONAL KINEMATICS OF UPPER EXTREMITY IN ARMWRESTLING. Lin-Hwa Wang, Meng-Kai Hong, Kuo-Cheng Lo, Hong-Wen Wu.	337
4063	BIOMECHANICAL EVALUATION OF VOLLEYBALL PLAYERS FORCE AND VELOCITY SKILLS. Robert Michnik, Jacek Jurkojć, Agata Guzik-Kopyto, Krzysztof Czaplá.	339
4067	A STABILOMETRY ANALYSIS OF PEOPLE WITH STROKE. Jacek Jurkojć, Robert Michnik, Agata Guzik-Kopyto, Wieslaw Rycerski.	341
4070	CHILD'S MUSCUOLOSKETAL MODEL OF THE LOWER EXTREMITIES. Agnieszka Głowacka, Robert Michnik.	343
4072	ANALYSIS OF MANIPULATION FUNCTION OF PATIENTS WITH UPPER LIMB DISORDERS. Agata Guzik-Kopyto, Robert Michnik, Jacek Jurkojć, Piotr Wodarski, Wieslaw Rycerski, Marcin Streiss.	345
4619	BIOMECHANICAL ANALYSIS OF SURGICAL TREATMENT OF THE CERVICAL SPINE - ARTHRODESIS. Diana Gavazzo, António Completo, Abel Nascimento.	347
4635	BIOMODELLING CERVICAL SPONDYLOTIC MYELOPATHY: EVALUATION AND SURGICAL PLANNING. Luís Queijo, João Rocha, Paulo Miguel Pereira.	349
3937	CONSTRUCTION AND GLOBAL VALIDATION OF A BIOFIDELIC 6-MONTH-OLD PEDIATRIC HEAD FINITE ELEMENT MODEL. Zhigang Li, Xiao Luo, Rongxin Feng, Jinling Zhang, Jinhuan Zhang.	351
4312	BIOMECHANICAL ANALYSIS OF INTRINSIC PARAMETERS IN KNEE CARTILAGE. António Completo, Joana Pereira, António Ramos, Carlos Relvas, José Simões.	353
TRACK_L: ENERGY AND THERMO-FLUID SYSTEMS		355
4007	IMPLEMENTATION OF A HYDRIC ENERGY HARVESTING SYSTEM FOR WIRELESS SENSOR NETWORKS. Filipe Santos, Joaquim Azevedo.	357
4009	MULTIDOF WIRELESS SENSOR SYSTEM BASED ON IMU-MEMS TECHNOLOGY SUPPORTED BY ENERGY HARVESTING METHODS. Jerzy Kaleta, Krzysztof Kot, Monika Rikitatt, Przemyslaw Wiewiorski.	359
4010	RAPID DEMAGNETIZATION OF NEODYMIUM MAGNETS, DUE TO MECHANICAL SHOCK, AS A PULSE POWER SUPPLY FOR MICROPROCESSOR SYSTEM. Jerzy Kaleta, Przemyslaw Wiewiorski.	361
4049	THE EFFECT OF THERMAL BARRIER COATING ON THE LIFE EXTENTION OF A GAS TURBINE ROTARY BLADE. Reza Torabideh, Saeed A. Kouhanjani, Hamid M. Zoka, Maryam Torfeh, Reza Ghorbani.	363
4112	OPTIMIZATION OF FUEL CONSUMPTION IN COMPRESSOR STATIONS. T.M. Elshiekh, H.A. El Mawgoud.	365

4744	UNCERTAINTY QUANTIFICATION IN FLOW ASSURANCE APPLICATIONS THROUGH SURROGATE MODELLING APPROXIMATIONS. Athanasios Kolios, Konstantinos Salonitis.	367
TRACK_M: IMPACT AND CRASHWORTHINESS		369
3969	CRASH ENERGY ABSORPTION OF ALUMINIUM FOAMS WITH MODIFIED CELLULAR STRUCTURES. Nuno Peixinho, Paulo Pinto, Filipe Silva, Delfim Soares.	371
4026	CRASHWORTHINESS OF HYBRID STRUCTURES. Thomas Tröster, Christian Lauter, Corin Reuter.	373
4334	PRESTRESS EFFECT ON THE BALLISTIC BEHAVIOR OF CERAMIC ARMOR. Ahmad Serjouei, Runqiang Chi, Idapalapati Sridhar, Tan B. Eng Geoffrey.	375
4768	A PUNCH TEST AS A SIMPLE VERIFICATION METHOD OF THE FABRIC MATERIAL MODEL. Andrzej Morka, Piotr Kedzierski, Pawel Bogusz, Tadeusz Niezgodá.	377
4769	NUMERICAL STUDY OF THE BALLISTIC RESISTANCE OF THE ARAMID FABRIC LAYERS. Piotr Kedzierski, Andrzej Morka, Tadeusz Niezgodá.	379
TRACK_N: CASE STUDIES		381
3859	IMPROVING THE BRAZILIAN ELECTRIC SYSTEM RELIABILITY THROUGH ENERGY FROM WASTE AS A DECENTRALIZED SOLUTION. Carlos Frederico Barros, Fernando Reichert, Sérgio Godoy, Fernando Melo, Rodolfo Cardoso.	383
3860	A SELECTION SYSTEM OF BRAZILIAN NUCLEAR SITES BASED ON EPRI SITING GUIDE MODEL USING FUZZY LOGIC: AN EXPLORATORY EXERCISE IN RELIABILITY ENGINEERING. Carlos Frederico Barros, Drausio Lima Atalla, Carlos A. N. Cosenza.	385
3872	RELIABILITY MODEL EXPLOITATION IN INDUSTRIAL SYSTEM MAINTAINABILITY USING EXPERT SYSTEM EVALUATION. Ahmed Hafaifa, Belhadef Rachid, Guemana Mouloud.	387
3909	SEISMIC EVALUATION OF A RC BRIDGE WITH MONOLITHIC CONNECTION OF MULTI-CELL CIRCULAR DECK AND PIERS. Omid Afsharian Zadeh, Araliya Mosleh.	389
3931	A REVIEW ON CONSTRUCTION DETAILS THAT INFLUENCE THE STABILITY OF BRICK FAÇADES. Tiago T. Martins, Borja J. Salado, Suyapa Sánchez-Toscano, Ramón A. Cabal.	391
4016	ANALYSIS OF AN APARTMENTS BUILDING SURMONTED BY A TANK WITH A CONTAINER CAPACITY OF 1000 M3 IN ALGIERS. Said Hamitouche, Hocine Hammoum, Karima Bouzelha, Naceur E. Hannachi.	393
3971	FATIGUE SERVICE LIFE TEST OF THE TRIPPLE HYBRID HYDROGEN FUEL CELL BUS STRUCTURE. Jaroslav Václavík, Jan Chvojan.	395
3910	A MICROSCOPIC FAILURE ANALYSIS OF MEDIUM TRUCK BRAKE DISCS. Arie Bussiba, Rami Carmi, Igal Alon.	397
4024	STAMPING OF ADVANCED HIGH STRENGHT STEEL: COMPARATIVE STUDY OF STEELS FE E340, FE 600DP AND FE 800DP. Gilmar C. Silva, Henrique C. Amaral, José R.C. Carneiro, Tarcísio J. Almeida.	399
4726	CELLULAR AUTOMATON METHOD APPLIED FOR MICROSTRUCTURE PREDICTION OF Al-Si CASTING TREATED BY LASER BEAM. Zenon Ignaszak, Pawel Popielarski, Jakub Hajkowski, Bartłomiej Dudziak, Marek Gościański.	401
4678	FLUTTER ANALYSIS OF A COMPOSITE VARIABLE-SPAN WING. Pedro V. Gamboa, Pedro D.R. Santos, José M.A. Silva, Pedro M.B. Santos.	403

4618	DEBONDING OF HOT-EMBOSSSED POLYMERIC MICROFLUIDIC SUBSTRATE: INFLUENCE OF SUBSTRATE THICKNESS ON DEMOLDING BEHAVIOR. Jeffrey William Tani, Yue Chee Yoon.	405
4679	STRUCTURAL DESIGN OF A COMPOSITE VARIABLE-SPAN WING. Pedro D.R. Santos, Pedro V. Gamboa, Pedro M.B. Santos, José M.A. Silva.	407
4708	MAINTENANCE ON CONDITION AND CORRECTIVE MAINTENANCE: EMPHASIS ON ASSET RELIABILITY IN INDUSTRIAL SECTOR. Eloi Dutra, Claudinei J. Oliveira, Gilmar Cordeiro.	409

C. SPECIAL SYMPOSIA**SYMP_01: SMART STRUCTURES AND MATERIALS**

4046	DEVELOPMENT OF TECHNICAL CLOTHING FOR EVERYDAY WITH FUNCTIONAL AND SMART STRUCTURES. Catarina Lopes, Maria José Geraldés.	415
4056	A MECHANICAL ANALYSIS OF MAGNETORHEOLOGICAL COMPOSITES USED FOR DAMPING OF THE VIBRATION. Anna Boczkowska, Stafan F. Awietjan, Danuta Miedzinska, Grzegorz Slawinski, Tadeusz Niezgodá.	417
4086	FUNCTIONAL KINITTING FOR CHILDREN SEGMENT: THE "DRY BABY" BODY. Ana Luiza Olivete, Maria José Geraldés.	419
4626	STATIC AND DYNAMIC SHAPE CONTROL OF LAMINATED BEAMS WITH RESISTEVELY INTERCONNECTED PIEZOELECTRIC PATCHES. Juergen Schoefiner, Gerda Buchberger.	421
4671	CHARACTERIZATION OF THERMOPLASTIC-COMPATIBLE PIEZOCERAMIC MODULES FOR FUNCTION INTEGRATIVE COMPOSITE STRUCTURES. T. Heber, M. Gude, W. Hufenbach, M. Dannemann, A. Winkler, T. Weber.	423
4687	REVIEW OF POSSIBILITY APPLICATION SHAPE MEMORY ALLOY IN KINETIC ENERGY RECOVERY SYSTEMS. Wojciech Klein, Arkadiusz Mężyk.	425
3993	POWER HARVESTING APLICATION. Carlos A. Gallo, Roberto M.F. Neto, Amanda M. Souza, Leonardo R.O. Condor, Roberta C.S. Moreira.	427

SYMP_03: IMAGING AND VISUALIZATION

3916	VIRTUAL REALITY TECHNOLOGY USED AS A LEARNING TECHNOLOGY IN CIVIL ENGINEERING EDUCATION: THE CONSTRUCTION OF BRIDGE DECKS. A. Z. Sampaio, Luís Viana.	431
4018	VISUAL FAILURE ANALYSIS METHODS OF DYNAMIC SEALING SYSTEMS. Frank Bauer.	433
4695	MATCHING ICP FOR RECONSTRUCTION OF 3D OBJECTS WITH LASER SCAN. Edward Fuentes-Aliaga, Diego Aracena-Pizarro.	435
4722	A METHOD TO AUTOMATICALLY SEGMENT THE INTERNAL EAR STRUCTURES IN CT IMAGES. Ana Ferreira, Francisco Oliveira, Fernanda Gentil, João M.R.S. Tavares.	437
4750	X-RAYS TOMOGRAPHIC RECONSTRUCTION IMAGES OF MATERIALS USING INVERSE PROBLEM RESOLUTION BASED ON SPARSE REGULARIZATION METHOD. Aicha Allag, Redouane Draï.	439

SYMP_04: OPTICAL TECHNIQUES OF EXPERIMENTAL MECHANICS IN DESIGN

3919	THE PROPAGATION OF ELASTIC WAVE IN PRESTRESSED THIN PERFORATED PLATE. Rongxin Feng, Kaixin Liu, Zhigang Li, Jinling Zhang.	443
------	--	-----

4036	DISPLACEMENT AND STRAIN FULL-FIELD MEASUREMENT AT OPEN HOLE COMPOSITE SPECIMEN USING THE DIGITAL IMAGE CORRELATION TECHNIQUE. João Ribeiro, Hernari Lopes, Soraia Pimenta, Mário A.P. Vaz.	445
4634	DISPLACEMENT AND STRAIN FIELDS ASSESSMENT OF PDMS USING DIGITAL IMAGE CORRELATION. Bebiána Mendonça, João Ribeiro, Hernâni Lopes, Pedro Martins, Mário A.P. Vaz, J.F. Silva Gomes.	447
4627	HOLOGRAPHIC TECHNIQUES APPLIED IN DENTISTRY STUDIES. Jaime M. Monteiro, Hernani Lopes, Mário A.P. Vaz, Cássia B. Corrêa, Luiza Mello.	449
4712	REAL-TIME DAMAGE IDENTIFICATION USING ROTATING FIELD ANALYSIS. Hernâni Lopes, João Ribeiro, J.V. Araújo Santos, Mário A.P. Vaz, J.F. Silva Gomes.	451
4087	A SELECTIVE PHASE FILTER TECHNIQUE BASED ON SPECKLE DECORRELATION. Hernari Lopes, João Ribeiro, J.V. Araújo Santos, Mário A.P. Vaz.	453
4669	A FLEXIBLE SINGLE IMAGE TECHNIQUE FOR RESOLUTION ENHANCEMENT OF THE FOURIER TRANSFORM FRINGE ANALYSIS METHOD. Paulo J. Tavares, Mário A.P. Vaz, J.F. Silva Gomes.	455
4740	A NOVEL GRAZING ILLUMINATION SYSTEM FOR FATIGUE CRACK GROWTH MEASUREMENT. Nuno Viriato, Paulo J. Tavares, Pedro M.G.P. Moreira, Mário A.P. Vaz.	457
SYMP_05: BLOOD FLOW MECHANICAL BEHAVIOUR		459
3947-IP	BLOOD SIMULATION AND VIRTUAL BYPASS SURGERY. Catarina F. Castro, Carlos C. António, Luísa C. Sousa. (Invited Paper)	461
3898	STENOSED CAROTID BIFURCATION: HEMODYNAMICS AND WALL SHEAR STRESS. Luísa Sousa, Catarina Castro, Carlos C. António, Fernando Sousa, Rosa Santos, Pedro Castro, Elsa Azevedo.	463
4654	ON THE MECHANICAL FAILURE OF ARTERIAL PROSTHESES. Catarina F. Castro, Carlos C. António, Luísa C. Sousa.	465
4657	AUTOMATIC SEGMENTATION OF THE CAROTID ARTERY IN ULTRASOUND B-MODE IMAGES. André M.F. Santos, João M.R.S. Tavares, Elsa Azevedo, Luísa C. Sousa.	467
4776	NUMERICAL STUDY OF BLOOD FLOW IN A BIFURCATION WITH A STENOSIS: PULSATILE FLOW AND ELASTICITY OF THE FLUID. S.I.S. Pinto, E. Doutel, J.B.L.M. Campos, J.M. Miranda	469
SYMP_06: INTEGRITY, RELIABILITY AND FAILURE IN DENTAL MATERIALS		471
3923	THE INFLUENCE OF TEMPERATURE ON MECHANICAL AND TRIBOLOGICAL PROPERTIES OF DENTAL MATERIALS. Marius Pustan, Cirina Birleanu, Cristian Dutescu, Luana Calin.	473
4066	OSSEOINTEGRATION OF DENTAL IMPLANTS IN rhBMP-2 INDUCED BONE AND STEM CELL-BASED INDUCED BONE: A HISTOLOGIC STUDY IN THE RABBIT PERI-IMPLANT DEFECT MODEL. Isabel Guerra, Helena Figueiral, Mário Vasconcelos, José R. Campos, Margarida Sampaio.	475
4325	EFFECT OF HOT PRESSING VARIABLES ON THE STRENGTH AND POROSITY OF COCRMO ALLOY POWDER COMPACTS. M.A. Bagheri, B. Henriques, F. Toptan, F.S. Silva, M Gasik.	477
4697	INDIRECT REPAIR OF METAL-CERAMIC RESTORATIONS: THE BONDING ISSUE. Paulo A. Guimarães, Paulo J. Almeida, Francisco Góis, João S. Fernandes.	479
4653	PERI-IMPLANT BIOLOGICAL COMPLICATIONS AND OVERDENTURES. Margarida S. Fernandes, Paula Vaz, Patrícia Fonseca, José C. Reis Campos, Maria Helena Figueiral.	481

4703	BIOMECHANIC LAWS APPLIED TO A FIXED DENTAL PROSTHESIS - HOW CAN THEY AFFECT THE REHABILITATION? A CLINICAL CASE. Francisco Góis, Pedro Fernandes, Paulo Almeida, José M. Rocha, André Correia, João S. Fernandes.	483
4065	DENTAL IMPLANT PROSTHODONTIC REHABILITATION AND IL-1 GENE POLYMORPHISMS. Paula Vaz, João Fernandes, Ana Braga, António Felino, Maria Tavares.	485
4045	MOUTHGUARD FOR ORTHODONTIC PATIENT TRUMPET PLAYER. Maria João Ponces, Saúl Castro, Maria Cristina Pollmann, Paula Vaz, Jorge Dias Lopes.	487
4043	RETROSPECTIVE EVALUATION OF THERAPEUTIC OUTCOMES OF FUNCTIONAL APPLIANCES COMBINED WITH HEADGEAR. Maria João Ponces, José P. Tavares, Eugénio Martins, Paula Vaz, Afonso Ferreira.	489
4014	CONE BEAM COMPUTED TOMOGRAPHY AND PROSTHODONTIC REHABILITATION OF CLEIDOCRANIAL DYSOSTOSIS. Paula Vaz, Maria Ponces, Inês Corte-Real, Afonso Ferreira, José R. Campos.	491
4305	TOOTH GERMS IN PRENATAL ULTRASOUND - ITS IDENTIFICATION IS POSSIBLE?. Mariana Seabra, Paula Vaz, Francisco Valente, Ana Braga, António Felino.	493
4306	PRENATAL ULTRASOUND SCREENING, TOOTH GERMS HISTOLOGY AND HYPODONTIA. Mariana Seabra, António Felino, Francisco Valente, Rosete Nogueira, Paula Vaz.	495
SYMP_07: MECHANICAL CHARACTERIZATION OF BONE BEHAVIOUR		497
4352	MODE I FRACTURE CHARACTERIZATION OF BOVINE BONE USING THE DCB TEST. F.A.M. Pereira, N. Dourado, M.F.S.F. Moura, J.J.L. Morais, F. Silva, M.I.R. Dias.	499
4351	MODE II FRACTURE CHARACTERIZATION OF BOVINE BONE USING THE ENF TEST. F.A.M. Pereira, M.F.S.F. Moura, N. Dourado, J.J.L. Morais, F. Silva, M.I.R. Dias.	501
4650	EFFECT OF BONE COMPOSITION AND APPARENT DENSITY ON LOCATIONAL VARIATION IN ELASTIC AND PLASTIC MODULI OF CORTICAL BONE. N.K. Sharma, D.K. Sehgal, R.K. Pandey.	503
4680	LOWER LIMB MATHEMATICAL MODELING WITH INERTIAL MOTION CAPTURE DURING NORMAL WALKING. Gennady Aryassov, Artem Kuznetsov, Victor Musalimov, Sergei Zhigailov.	505
SYMP_10: STRUCTURAL AND MULTIDISCIPLINARY OPTIMIZATION		507
4106-IP	A CO-EVOLUTION APPROACH FOR RBDO OF COMPOSITE STRUCTURES UNDER DYNAMIC BEHAVIOR. Carlos C. António. (Invited Paper)	509
3896	REDUCED BASIS SURROGATE MODELLING APPROACH APPLIED TO THE IDENTIFICATION OF MECHANICAL PROPERTIES. Christian Gogu, Jean Charles Passieux.	511
3948	SHAPE OPTIMIZATION OF A LIGHTWEIGHT TETRAPOD ELEMENT USING CAD/CAE TOOLS AND METAMODELS. Alexander Janushevskis, Anatoly Melnikovs, Janis Janusevskis.	513
4117	ANN-MCS APPROACH FOR GLOBAL UNCERTAINTY ANALYSIS OF COMPOSITE STRUCTURES. Carlos C. António, Luisa N. Hoffbauer.	515
4622	STIFFENER LAYOUT OPTIMIZATION OF THE OVERALL BUCKLING OF THIN-WALLED STIFFENED PLATE. Lianchun Long, Yang Li.	517
4659	APPLICATION OF ANALYTICAL TARGET CASCADING TO THE DESIGN OF A RAILWAY VEHICLE SUSPENSION SYSTEM. Dário Silva, Hugo Policarpo, Miguel M. Neves, Virginia Infante.	519

4012	ADDRESSING GEOMETRICAL NONLINEARITY CONSIDERING PROBABLISTIC MATERIAL NONLINEARITY. Iffat Siddique.	521
4029-IP	OPTIMIZATION OF ORTHOTROPIC PLATES UNDER UNCERTAIN LOADING SUBJECT TO FAILURE CRITERION. Isaac S. Radebe, Sarp Adali. (Invited Paper)	523
SYMP_11: INNOVATIVE JOINING PROCESSES		525
3966	ADHESIVELY BONDED FUNCTIONALLY GRADED JOINTS. R.J.C. Carbas, L.F.M. Silva.	527
4674	AA6082-T6 FRICTION STIR WELDED T JOINTS OPTIMIZATION. Ana C. F. Silva, Daniel F.O. Braga, M.A.V. Figueiredo, Pedro M.G.P. Moreira.	529
4675	AA6082-T6 FRICTION STIR WELDED BUTT JOINTS OPTIMIZATION. Ana C. F. Silva, Daniel F.O. Braga, M.A.V. Figueiredo, Pedro M.G.P. Moreira.	531
4682	INOVATIVE HYBRID JOINT TECHNIQUE THROUGH FRICTION STIR WELDING AND ADHESIVE BONDING. Daniel F.O. Braga, Ana Silva, Miguel A.V. Figueiredo, L.F.M. Silva, Pedro M.G.P. Moreira.	533
4715	STUDY OF ALTERNATIVE MANUFACTURING PROCEDURES FOR AN ALUMINIUM RAILWAY CAR PASSENGER UNDERFRAME. João P.A. Dias, Daniel F.O. Braga, Sérgio M.O. Tavares, Pedro M.G.P. Moreira, Paulo M.S.T. Castro.	535
SYMP_12: VIBRATION AND STRUCTURAL ACOUSTIC ANALYSIS		537
3951	A 3D VIBROACOUSTIC MODEL FOR THE PREDICTION OF UNDERWATER NOISE FROM OFFSHORE PILE DRIVING. Apostolos Tsouvalas, Andrei Metrikine.	539
3952	A PARAMETRIC STUDY ON THE INFLUENCE OF VARIOUS PARAMETERS ON THE UNDERWATER NOISE LEVELS GENERATED BY OFFSHORE PILE DRIVING. Gargi Kaushik, Apostolos Tsouvalas, Andrei Metrikine.	541
3981	COMBINING NEURAL NETWORKS FOR ONLINE DAMAGE DETECTION IN EULER-BERNOULLI BEAMS. Juliana Almeida, Hugo Alonso, Paula Rocha.	543
4082	THE INFLUENCE OF TEMPERATURE FIELD ON VIBRATION OF NANO, MICRO AND MINI BEAMS. Jurij Avsec.	545
4092	MECHANICAL CONTROL OF INELASTIC CHARACTERISTICS, DEFECT NANOSTRUCTURE CHANGING OF SiO ₂ + Si WAFER-PLATE, GeSi. A.P. Onanko, S.A. Vyzhva, Y.A. Onanko.	547
4637	INVESTIGATION OF THE ADEQUACY OF THE ACOUSTIC FIELD MODEL IN THE CLOSED SPACE CAUSED BY SEVERAL SOURCES. Robertas Mikalauskas, Vitalijus Volkovas.	549
4645	A STUDY OF THE IMPLICIT SECULAR EQUATION FOR RAYLEIGH WAVES IN 2D ORTHOTROPY. Jan Cerv, Jiri Plešek.	551
4658	A METHODOLOGY FOR THE PERFORMANCE EVALUATION OF DIFFERENT SURFACE DAMPING TREATMENTS. Márcio Furukava, Hugo Policarpo, Miguel M. Neves, Nuno M.M. Maia, Olavo M. Silva, Dário Silva, Samir N.Y. Gerges.	553
4684	DYNAMIC RESPONSE OF LAYERED SATURATED SOIL SUBJECT TO SUBWAY TRAIN LOADS. Ding YuQin, Chen ChunLai, Gao ShuWei, Tao Rong.	555
4691	ON EFFECT OF MECHANICAL PROPERTIES OF POROUS MATERIALS ON THE TRANSFER OF ACOUSTIC VIBRATIONS. Elena Prokofieva, Mike Barker, Minsung Cho.	557
4733	NEW VIBRODYNAMIC PHENOMENA RELATIVE TO THE SPECIFIC VOLUME FORMS OF LOOSE/GRANULAR MATTER. Yuri Makov.	559

4746	SOUND AND VIBRATION IN AN INTERDISCIPLINARY CONTEXT; SOME EXAMPLES FROM THE LAB. Jan Tro, Ulf Kristiansen.	561
4751	DECONVOLUTION ALGORITHMS AND THEIR APPLICATIONS IN ULTRASONIC INSPECTION OF CFRP MATERIAL. Abdessalem Benammar, Redouane Draï.	563
SYMP_13: DYNAMICS, STABILITY AND CONTROL IN ENGINEERING STRUCTURES		565
3997	ANALYSIS OF THE STABILITY AND DESIGN OF CANTILEVERED SIGN SUPPORTS IN HIGHWAYS. Fábio Paiva, Rui C. Barros.	567
4006	DYNAMIC BEHAVIOUR OF A GUYED TOWER: DESIGN STUDY. Cecília Mendonça, Rui C. Barros.	569
4031	DESIGN OF LATTICE WIND TOWERS AND COMPARISON WITH THE TYPICAL SELF-SUPPORTED TUBULAR TOWERS. Jorge Henriques, Rui C. Barros.	571
4692	A DISPLACEMENT FORMULATION FOR CYLINDRICAL SHELLS UNDER RADIAL LOADS. Luísa Madureira, Elza M.M. Fonseca, Rui C. Barros.	573
4756	PASSIVE CONTROL OF CIVIL ENGINEERING STRUCTURES. Manuel Braz-César, Rui C. Barros.	575
SYMP_14: ASSESSMENT, MONITORING AND CONTROL OF CIVIL ENGINEERING STRUCTURES		577
3949	ASSESSMENT OF A FULL SCALE PEDESTRIAN BRIDGE BY MODEL UPDATING. Faisal Shabbir, Piotr Omenzetter .	579
4111	IMPLEMENTATION AND MONITORING OF A PASSIVE CONTROL SYSTEM IN A LIVELY FOOTBRIDGE. Elsa Caetano, Carlos C. Moulinho, Álvaro Cunha.	581
4003	A SIMPLE AND RAPID APPROACH TO POST-EARTHQUAKE ASSESSMENT OF BRIDGE CONDITION AND DAMAGE. Shahab Ramhormozian, Piotr Omenzetter.	583
4074	ASSESSMENT OF THE STRUCTURAL BEHAVIOUR OF A REHABILITATED IRON PLATFORM ("EL CABLE INGLES") BY THE APPLICATION OF OPERATIONAL MODAL ANALYSIS AND MODEL UPDATING. Javier F.J. Alonso, Andres Sáez Pérez.	585
3988	NON-DESTRUCTIVE CHARACTERIZATION AND DYNAMIC IDENTIFICATION OF AN HISTORICAL BELL TOWER. Angelo S. Carone, Dora Foti, Nicola I. Giannoccaro, Riccardo Nobile.	587
3891	SEISMIC BEHAVIOR OF ARCH DAMS AND APPURTENANT WORKS. MONITORING AND MODELLING. Sérgio Oliveira, André Silvestre, Margarida Espada, Romano Câmara.	589
4047	SEISMIC VULNERABILITY OF STRATEGIC BUILDINGS IN ORAN (ALGERIA). Ramdane Kheir-Eddine, Senouci Abbas, Mammar Lahouari.	591
3925	COMPARATIVE LINEAR AND NON-LINEAR TIME-HISTORY ANALYSIS OF AN EXPERIMENTAL PROTOTYPE STRUCTURE USING ADVANCED TECHNIQUES. Sebastian Crijanovschi, Gabriela M. Atanasiu.	593
4039	PASSIVE-DAMPING DESIGN FOR STRUCTURAL VIBRATION CONTROL: A VELOCITY-FEEDBACK ENERGY-TO-PEAK APPROACH. Francisco Palacios-Quifonero, Josep M. Rossell, Josep Rubió-Massegú, Hamid R. Karimi.	595
3956	EFFECTIVE LIMITS TO SUBPIXEL ACCURACY IN TRACKING MOVING TARGETS. Belén Ferrer, Julián Espinosa, Jorge Pérez, David Mas.	597
4028	LOCATING AND QUANTIFYING DAMAGES IN 3-D FRAME USING RESIDUAL ERROR METHOD AND NEURAL NETWORKS. Marília Marcy, Andrea Brasiliano, Gustavo Lima, Graciela Doz.	599

4093	ASSESSMENT OF A MULTIPLE-SPAN BRIDGE BY NUMERICAL MODELLING AND IN-SITU MONITORING. Xinghua Chen, Piotr Omenzetter, Sherif Beskhyroun.	601
4095	DYNAMIC IDENTIFICATION AND FINITE MODEL UPDATING OF TRANI CATHEDRAL'S BELL TOWER. M. Diaferio, Dora Foti, Nicola I. Giannoccaro, Francesco Tucci.	603
SYMP_15: BEHAVIOUR CHARACTERIZATION OF CONSTRUCTIONS FOR EARTHQUAKE DEMANDS		605
3881	MODAL ANALYSIS OF SOIL-STRUCTURE INTERACTION USING COMBINED ASYMPTOTIC METHOD. Alexander Tyapin.	607
3958	EFFECT OF MASONRY INFILL WALLS ON THE SEISMIC BEHAVIOUR OF BUILDINGS DURING THE MAY 2011 LORCA EARTHQUAKE. Silvia R. Gutiérrez, José R.A. Arroyo, Peter P. Hoogendoorn, Ramón A. Cabal, Julio C. López-González.	609
4689	A NONLINEAR SOIL CONSTITUTIVE MODEL BASED ON HYPERBOLIC TANGENT FUNCTION. YuQin Ding, YongXing Zhang.	611
4754	RETROFIT OF RC COLUMNS CYCLICALLY LOADED IN BIAXIAL FLEXURE WITH AXIAL FORCE. J.P. Silva, P. Rocha, H. Rodrigues, N. Vila Pouca, A. Arêde.	613
4755	CODE BASED DESIGN PROCEDURE AND ITS IMPACT ON REAL CONSTRUCTION PRACTICES IN NEPAL. Hemchandra Chaulagain, Hugo Rodrigues, Enrico Spacone, Humberto Varum.	615
3959	SEISMIC CHARACTERIZATION OF TRADITIONAL TIMBER FRAME WALLS: EXPERIMENTAL RESULTS. Elisa Poletti, Graça Vasconcelos.	617
4042	NUMERICAL MODELLING AND EXPERIMENTAL CHARACTERIZATION OF POMBALINO "FRONTAL" WALL CYCLIC BEHAVIOR. Ana Maria Gonçalves, João G. Ferreira, Luis Guerreiro, Fernando Branco.	619
SYMP_17: CONCRETE MATERIAL PERFORMANCE		621
3976	MIXING DURATION EFFECTS ON THE PERFORMANCES OF SELF-COMPACTING CONCRETE WITH LIMESTONE'S FINE. S. Bensalem, H. Houari.	623
4002	EFFECTS OF MINERAL PRODUCTS AND CURING TIME ON THE BEHAVIOR OF NEW CONCRETE. Djihen Benchiheb, Chahinez Amouri, Hacène Houari Hacène.	625
4078	PERFORMANCE OF THE SELF-COMPACTING CONCRETE WITH DIFFERENT MINERAL ADMIXTURES. S. Bensalem, H. Houari.	627
4696	INFLUENCE OF THE SPECIMEN MOLD IN THE CONCRETE COMPRESSIVE STRENGTH TEST. Lino Maia, Cátia Caetano, Miguel Correia.	629
4731	DESIGN OF COLOURED SELF-COMPACTING CONCRETE MADE WITH CRUSHED VOLCANIC AGGREGATES. Lino Maia, Celestino Gomes, Miguel Guimarães.	631
4771	MODULUS OF ELASTICITY OF CONCRETE PRODUCED WITH BASALTIC AGGREGATES. Lino Maia, Cátia Caetano, Miguel Correia, José Santos.	633
4774	DETERMINATION OF THE CONCRETE COHESIVE LAW UNDER MODE I LOADING USING AN INVERSE METHOD. N. Dourado, F. Silva, J. Xavier, M.S.F.S. Moura	635
SYMP_18: SAFETY OF WOODEN STRUCTURES		637
3899	CONSERVATION OF WOODEN CURCH IN THE VILLAGE TRNOVÉ. Katarína Zgútová, Martin Pitoňák, Juraj Šrámek, Dominika Ďureková.	639

4699	RECYCLED WOODEN RAILROAD TIES. Edgar V.M. Carrasco, Leonardo B. Passos, Judy N.R. Mantilla.	641
4524	DIMENSIONAL STABILITY OF WOOD IN PRESENCE OF WATER. Débora Ferreira, Cristina Pinto, Paula Borges, Elza M.M. Fonseca.	643
3917	EMBEDDING STRENGTH PARALLEL AND PERPENDICULAR TO THE GRAIN UNDER THERMAL ACTION. Manuel J.M. Figueroa, Poliana Dias Moraes.	645
3964	STRESS REDISTRIBUTIONS PROVOKED BY THE USE OF EXPANSIVE SYSTEMS IN TIMBER STRUCTURES. Jose G. Fuego, Manuel Dominguez, Jose A. Cabezas.	647
4057	NUMERICAL MODEL TO EVALUATE THE FIRE RESISTANCE IN WOODEN SLABS WITH CAVITIES. D. Coelho, Elza M.M. Fonseca, Paulo Vila Real, J.A. Faria, A. Arede.	649
4089	NUMERICAL MODEL TO ASSESS THE FIRE BEHAVIOUR OF CELLULAR WOOD SLABS WITH DRILLINGS. Elza M.M. Fonseca, L.M.S. Barreira, J.M. Meireles, Paulo A.G. Piloto.	651
4651	MODEL FIRE OF TWO STOREY WOODEN - FRAME BUILDING. Linda Makovická Osvaldová, Anton Osvald, Martin Petho.	653
4102	A CONTRIBUTION TO ASSESS THE STRUCTURAL VULNERABILITY OF TRADITIONAL TIMBER PAVEMENTS. Marcos Teixeira, Débora Ferreira, Vitor Cunha, Artur Feio, José Lousada, Humberto Varum, João M. Guedes, Jorge Pinto.	655
4624	INFLUENCE OVER THE STRESSES OF THE SIZE AND POSITION OF THE PUNCHED METAL PLATES STRUCTURAL TIMBER JOINTS. Jose G. Fuego, Jose A. Cabezas, Manuel Dominguez.	657
4090	THERMAL ANALYSIS OF WOOD-STEEL HYBRID CONSTRUCTION. Elza M.M. Fonseca, H.M.E. Ramos, H.J.G. Silva, Débora R.S.M. Ferreira.	659
SYMP_19: OCCUPATIONAL SAFETY AND HEALTH		661
4289	MANAGING THE RISKS OF ORGANIZATIONAL ACCIDENTS IN LEADERSHIP MATTERS IN THE WORK OF MINING. Javier Rugeles, Gilson B.A. Alves.	663
4454	HEALTH AND SAFETY TEACHING IN THE CIVIL ENGINEERING MASTER: A CASE STUDY. Fernanda Rodrigues, Claudino Cardoso.	665
4643	TEST PROTOCOL VALIDATION FOR THERMAL ENVIRONMENT AND COGNITIVE PERFORMANCE. Emília Quelhas Costa, J. Santos Baptista, Daniela Couto, José Torres Costa, M. Tato Diogo, Pedro Almeida, Pedro Chaves, Jorge Carvalho, Ponce Leão.	667
4646	PROPOSAL OF A PATH TO SELECT A MATRICIAL METHOD FOR RISK ASSESSMENT. Cátia Ferreira, J. Santos Baptista.	669
4648	STUDY OF THERMAL ENVIRONMENT IN HOSPITAL GYMNASIUMS OF REHABILITATION. C. Rodrigues, J. Santos Baptista, M. Brito.	671
4649	RESULTS OF THERMAL COMFORT EVALUATION WITH DIFFERENT CRITERIA. A. Quental Martins, Joana Guedes, J. Santos Baptista.	673
4661	A COMPARATIVE STUDY OF RISK MANAGEMENT MODELS IN DIFFERENT ECONOMIC SECTORS. Carlos Igreja, Francisco A. Pinheiro, Rui M. Cruz, M. Tato Diogo.	675
4685	RISK MANAGEMENT VS. POPULATION AGEING AND EMERGING RISKS. Francisco P. Alves, M. Tato Diogo.	677
4688	RISK ASSESSMENT OF MANUAL APPLICATION OF PESTICIDES: COMPARING EFFECTIVENESS OF PASSIVE DOSIMETRY METHODS. Paulo J. Adissi, José L. Egito, Francisco P. Alves.	679

4704	SUGARCANE IN EUROPE +20: COMPARING WORKPLACE CONDITIONS - SUGARCANE HARVEST IN 1992/93 AND 2012/13. Paulo José Adissi, M. Tato Diogo.	681
4706	AN APPROACH TO OHS RISK ASSESSMENT IN SEAPORTS. Teresa Almeida, J. Santos Baptista.	683
SYMP_20: THERMODYNAMICS AND THERMO-FLUID SYSTEMS		685
4772-IP	MEASUREMENT OF AIR INFILTRATION, NATURAL VENTILATION AND DUCTS AIRFOWS WITH TRACER GAS TECHNIQUE: CASE STUDIES. Clito F. Afonso. (Invited Paper)	687
4059	FLUID, NANOFLUID AND MAGNETIC FLUID SLIP FLOW IN RECTANGULAR AND CIRCULAR MICROCHANNELS AND MINICHANNELS. Jurij Avsec.	689
4084	INTEGRITY, RELIABILITY & FAILURE IN REFRIGERATION SYSTEMS FOR DRAUGHT DRINKS. Clito F. Afonso, João Faria, Armando Oliveira, Miguel Tavares, Ricardo Reis, Joaquim Gabriel, Armando Araujo, Jorge Dias Pires, Cristina Silva.	691
4118	OPTIMIZATION OF THE ANNUAL SOLAR IRRADIATION AVAILABILITY IN URBAN ENVIRONMENT. Carlos C. António, João B. Monteiro, Clito F. Afonso.	693
4773	THERMAL IMPROVEMENTS IN HOUSEHOLD REFRIGERATORS. Clito F. Afonso	695
SYMP_21: LEAN AND GREEN MANUFACTURING		697
3914	LEAN APPROACH APPLIED TO PRODUCT DEVELOPMENT: SURVEY OF PRINCIPLES AND PRACTICES USED AUTO INDUSTRY IN BRAZIL. Ana Julia Dal Forno, Fernando A. Forcellini, Liane M. Kipper, Antonio C. Bornia.	699
3927	AN INDUSTRIAL APPLICATION OF THE SMED METHODOLOGY AND OTHER LEAN PRODUCTION TOOLS. Eric Costa, Rui Sousa, Sara Bragança, Anabela Alves.	701
3928	THE USE OF LEAN TOOLS TO IMPROVE THE PERFORMANCE OF AN ELEVATORS COMPANY. Sara Bragança, Anabela Alves, Eric Costa, Rui Sousa.	703
4035	PREPARATION OF A TEXTILE AND CLOTHING COMPANY TO LEAN IMPLEMENTATION BY IDENTIFYING ERGONOMIC AND ENVIRONMENTAL RISKS. Laura C. Maia, Anabela C. Alves, Celina P. Leão.	705
4767	A LEAN AND GREEN APPROACH TOWARDS REMANUFACTURING. Francisco Moreira.	707
SYMP_26: ADVANCES IN FIBROUS AND COMPOSITE MATERIALS FOR CIVIL ENGINEERING APPLICATIONS		709
4747	NANO-REINFORCED CONCRETE: AN INTELLIGENT AND HIGH PERFORMANCE CONSTRUCTION MATERIAL. Sohel Rana, Shama Parveen, Raul Figueiro.	711
4091	FLEXURAL BEHAVIOUR OF BRICK MASONRY RETROFITTED WITH BRAIDED TEXTILE MESHES. Graça Vasconcelos, Juan Mora, Raul Figueiro, Fernando Cunha, Andreia Martins.	713
3940	DEVELOPMENT OF NEW BRAIDED FIBROUS MATERIALS FOR RETOFITING OF MASONRY WALLS. Fernando Cunha, Sérgio Patinha, Sohel Rana, Raul Figueiro, Graça Vasconcelos.	715
4076	MICRO-STRUCTURE AND MECHANICAL PROPERTIES OF CARBON NANOTUBE/CEMENT NANOCOMPOSITES. Shama Parveen, Sohel Rana, Raul Figueiro.	717

3999	COMPARATIVE ASSESSMENT OF FRP'S AND STEEL BARS APPLIED ON THE REINFORCEMENT OF CONCRETE STRUCTURES. Sérgio Patinha, Sara Neiva, Sohel Rana, Raul Figueiro, Luís Bragança, Ricardo Mateus.	719	4723	A BAYESIAN APPROACH TO ESTIMATE COMPONENT DEGRADATION USING GAMMA PROCESS. Luis A. Ferreira, Daniel Gaspar, José L. Silva.	757
4011	VARIOUS CONTROL METHODS DEVELOPED FOR FIBRE- CONCRETE STRUCTURES. Leonard Hobst, Petr Bílek.	721	4734	GENERATING VALUE WITH TQM AND SIX SIGMA. J. Carlos Sá, José Oliveira.	759
4656	DEVELOPMENT AND MECHANICAL CHARACTERIZATION OF BIO-COMPOSITES FOR APPLICATION IN LIGHT-WEIGHT CONSTRUCTION. A. Alves, J. Velosa, S. Patinha, S. Rana, R. Fanguero.	723	4736	PRACTICAL DETERMINATION OF A RELIABILITY TEST SCOPE. Zdenek VINTR.	761
SYMP_27: STRUCTURAL HEALTH MONITORING OF ADVANCED STRUCTURES		725	4745	THE DMAIC CYCLE APPLIED TO PROJECT MANAGEMENT. Luís Carneiro Pinto, Alexandra Tenera.	763
3907	VIBRATION BASED HEALTH MONITORING AND DAMAGE DIAGNOSIS OF COMPOSITE BEAM STRUCTURE. Eldho Jacob Joy, Arun Kumar Saha.	727	4748	THE IMPORTANCE OF THE PUBLICATION OF THE FIRST EDITION OF THE PORTUGUESE-BRAZILIAN VIM 2012. Edivaldo A. Bulba, Helena V.G. Navas.	765
3911	IN-SITU STRUTURAL INTEGRITY EVALUATION FOR A HIGH POWER PULSED SPALLATION NEUTRON SOURCE. Masatoshi Futakawa, Takashi Wakui, Makoto Teshigawara, Takashi Naoe.	729	4763	DIMENSIONAL CONTROL CASE STUDY IN A PUNCHING CELL. J.M. Herrera Olivenza, D. Rodríguez Salgado, I. Cambero Rivero, J. García Sanz-Calcedo.	767
3924	A DSP SYSTEM APPLIED TO ELECTROMECHANICAL IMPEDANCE-BASED SHM ARCHITECTURE. Carlos A. Gallo, Antonio C. Oliveira Jr, Roberto M.F. Neto.	731	4770	RISK MANAGEMENT IN INNOVATIVE SME'S: A WEB-BASED MODEL. Luis Pereira, Alexandra Tenera.	769
3990	IMPACT & DAMAGE LOCATION IN COMPOSITE STRUCTURES BY SPATIAL SIGNAL CORRELATION ANALYSIS. Júlio C. Viana, Nelson J. Ferreira, Paulo J. Antunes, Gustavo R. Dias.	733	SYMP_30: MEDICAL DEVICES AND HEALTHCARE MATERIALS		771
4122	DEVELOPMENT OF INTELLIGENT HEALTH MONITORING SYSTEM FOR ROTATING MACHINERY AND STRUCTURAL COMPONENTS. A.A. Lakis, Ali Mahvash, M.H. Toorani.	735	4051	NUMERICAL SIMULATION OF BIODEGRADABLE POLYMERS CONSIDERING VISCOPLASTIC BEHAVIOUR. André Vieira, Rui M. Guedes, Volnei Tita.	773
4642	MODELING OF GUIDED WAVE INTERACTION WITH DISBONDS IN HONEYCOMB COMPOSITE SANDWICH PLATES SUBJECT TO PZT EXCITATIONS. Pol Chandrakant, Banerjee Sauvik.	737	4060	TEXTILE DESIGN OF STUCTURES WITH FUNCTIONAL PROPERTIES REPELLENCE FLYER OF MALARIA. Cláudia Pinheiro, Maria José Geraldes.	775
SYMP_28: FIRE AND STRUCTURAL ENGINEERING		739	4700	INFLUENCE OF AGEING OVER NON ACTIVE MEDICAL DEVICES. Maria José Abreu.	777
3890	FIRE ANALYSIS OF REINFORCED CONCRETE TUNNEL LINING. Giovanna Lilliu, Alberto Meda.	741	4701	APPLICATIONS OF TEXTILE BASED ELECTRODES IN GAIT ANALYSIS - PROLIMB PROJECT. André Catarino, Ana M. Rocha, Maria José Abreu, José M. Silva, José C. Ferreira, Vitor G. Tavares, Miguel V. Correia, Fardin Derogarian, Rúben Dias.	779
3953	QUANTITATIVE EVALUATION OF FIRE SAFETY FACTORS INFLUENCE FOR BUILDINGS USING COGNITIVE MAPS AND ANP APPROACH. Grzegorz Ginda, Mariusz Maślak.	743	4752	NARROW BAND IMAGING TECHNIQUE FOR ENDOSCOPY IN THE SMALL BOWEL. M.F. Silva, S. Lamas, C. Costa, C. Lima, C. Silva, G. Minas, P.M. Mendes, J.P. Carmo, L.M. Goncalves, J.H. Correia.	781
4041	FIRE BEHAVIOUR OF COMPOSITE STEEL TRUSS AND CONCRETE BEAM. Paulo A.G. Piloto, Sérgio P.P.A. Roque, Paulo M.M. Vila Real, Giovanni A. Plizzari.	745	SYMP_31: MICROMECHANICS AND HOMOGENIZATION OF HETEROGENEOUS MEDIA		783
4693	FIRE RESISTANCE TEST AND THE CRITICALNESS OF CONCRETE SPALLING REGARDING SAFETY. Alexander Korten, Volker Wetzig.	747	3934	HOMOGENIZATION OF STRUCTURES WITH GENERALIZED PERIODICITY MADE OF ELASTOPLASTIC MATERIALS WITH HIGHLY CONTRASTED PROPERTIES. George Chatzigeorgiou, Dimitrios Tsalis, Theocharis Baxevanis, Nicolas Charalambakis.	785
4729	EXPERIMENTAL ANALYSIS OF REVERSE CHANNEL JOINT COMPONENT AT ELEVATED TEMPERATURES. Pedro Barata, Aldina Santiago, João P. Rodrigues.	749	4676	EVALUATION OF EFFECTIVE THERMAL CONDUCTIVITY OF PERIODIC COMPOSITES WITH THERMAL BARRIER. Romildo S. Escarpini Filho, Severino P.C. Marques.	787
SYMP_29: METROLOGY, QUALITY CONTROL AND RELIABILITY		751	4069	SOME APPROACHES FOR THE DETERMINATION OF EFFECTIVE PROPERTIES OF ACTIVE MULTIPHASE COMPOSITES. Andrey V. Nasedkin, Anna A. Nasedkina, Vladimir V. Remizov, Maria S. Shevtsova.	789
4640	INTEGRATION OF ROBUST DESIGN AND STATISTICAL PROCESS CONTROL (SPC). Helena V.G. Navas, José G. Requeijo.	753	4308	FAILURE RESPONSE OF FIBER-EPOXY UNIDIRECTIONAL LAMINATE UNDER TRANSVERSE TENSILE/COMPRESSIVE LOADING USING FINITE-VOLUME MICROMECHANICS. Zhanwen Tang, Boming Zhang, Yalin Yu.	791
4673	MANAGEMENT SYSTEM FOR MONITORING AND MEASURING EQUIPMENT. José Barradas.	755	3894	A UNIFIED METHODOLOGY FOR THE HOMOGENIZATION OF PERIODIC MATERIALS WITH DAMAGE. Wenqiong Tu, Marek-Jerzy Pindera.	793
			4081	GENERALIZED FVDAM THEORY FOR PERIODIC MATERIALS UNDERGOING FINITE DEFORMATIONS. Marcio A.A. Cavalcante.	795
			4239	DISPERSION MONITORING ANALYSIS AND OPTIMISATION FOR EPOXY NANOREINFORCEMENT. Alkiviadis Paipetis, Giorgos Gkikas.	797

3933	HOMOGENIZATION OF MAGNETORHEOLOGICAL ELASTOMERS CONSIDERING GEOMETRICAL NONLINEARITIES. George Chatzigeorgiou, Ali Javili, Paul Steinmann.	799
3887	TARGETING THE RESPONSE OF BIOLOGICAL TISSUE VIA FINITE-VOLUME MICROMECHANICS. Wenqiong Tu, Marek-Jerzy Pindera.	801
SYMP_32: FAILURE AND FATIGUE OF STRUCTURAL ELEMENTS		803
3962	EXPERIMENTAL INVESTIGATIONS OF METAL HIGH-PRESSURE WAVE-RING GASKET. Andrzej Trojnecki, Bogdan Szybiński.	805
3965	ON THE OPTIMAL CHOICE OF STRESS RELIEF GROOVES IN FLAT WELDED ENDS FOR PRESSURE VESSELS. Bogdan Szybiński.	807
3967	ANALYTICAL AND NUMERICAL ASSESMENT OF FATIGUE PROPERTIES IN ROLLING BEARINGS. Pawel Romanowicz, Bogdan Szybiński.	809
3968	APPLICATION OF MULTIAXIAL HIGH-CYCLE FATIGUE CRITERIA IN ANALYSIS OF ROLLER BEARINGS. Pawel Romanowicz.	811
3975	MODELING OF FATIGUE DAMAGE EVOLUTION IN COMPOSITE STRUCTURES. Aleksander Muc, Piotr Kędziora, Zbigniew Krawiec.	813
4054	ULTRASONIC PEENING IN INDUSTRIAL APPLICATIONS. Jacob Kleiman.	815
4335	EFFECTS OF FATIGUE ON THE INTEGRITY OF A FRICTION STIR WELDED STRINGER-TO-SKIN LAP JOINT CONTAINING RESIDUAL STRESSES. Michael Bach, Ali Merati, Michael Gharghoury.	817
4644	STRESS INTENSITY FACTOR COMPUTATION: EXTENDED FINITE ELEMENT METHOD APPLIED TO 3D ENGINEERING PROBLEMS. A. Luis Silva, Hubert Maigre, Anthony Gravouil, Abílio M.P. Jesus, António A. Fernandes.	819
4677	ULTRASONIC MEASUREMENT OF RESIDUAL STRESSES IN WELDED ELEMENTS. Yuri Kudryavtsev.	821
4705	UNDERWATER ULTRASONIC PEENING OF WELDED ELEMENTS AND STRUCTURES. Yuri Kudryavtsev, Jacob Kleiman, Alexander Lugovskoy.	823
4711	CHARACTERIZATION OF X60 STEEL GRADE UNDER ULTRA LOW CYCLE FATIGUE LOADING. João Pereira, Abílio Jesus, José Xavier, António A. Fernandes.	825
4743	INFLUENCE OF COMPOSITE PATCH REPAIR ON FATIGUE CRACK GROWTH OF 6061 AL-ALLOY . Mustapha Benachour, Nadjia Benachour, Mohamed Bengueidba.	827
Author Index		829

EDITORS PREFACE

As the engineering community continues to cross the boundaries of known practices, materials and manufacturing techniques into the frontiers of new functional materials, environments and applications, the opportunities for catastrophic failures will inevitably increase. If our knowledge of how to engineer systems, structures and components to minimize or prevent catastrophic failure is to keep pace with modern manufacturing technologies, the demanding applications, and the intolerance of a safety conscious society, we must continue our efforts to develop and use superior materials, apply reliable analytical techniques and validate these with sound experimental tools. It is with this in mind that this series of conferences was organised.

The objectives of this gathering are to provide a forum for the discussion and dissemination of recent advances in assessing the integrity, reliability and failure of engineering structures, components, and assemblies, foster research in these areas, and promote international co-operation among scientists and engineers in the field. The goal is to enable concerned researchers and scientists from all over the world to exchange ideas on mechanics, materials and design as they relate to system integrity and reliability.

This fourth international conference, which is sponsored by the University of Porto, the University of Toronto and the University of Madeira, is part of a prestigious series of Integrity Reliability and Failure conferences coordinated by the International Scientific Committee on Mechanics and Materials in Design. The conference attracted over 300 participants with 380 accepted submissions from 45 different countries around the world. These papers were presented in June 23-27, 2013 in the magnificent city of Funchal, Madeira. The conference themes which address integrity, reliability and failure focused on Analytical and Numerical tools, Testing and Diagnostics, Surface and Interface Engineering, Sensors and Instrumentation, Tribology, Mechanical Design and Prototyping, Modes of Failure, Composite Materials, Nanotechnologies and Nanomaterials, Biomechanics, Energy and Thermo-Fluid Systems, Impact and Crashworthiness and Case Studies.

We are particularly indebted to the authors and special guests for their plenary lectures and presentations. Each of the more than 380 contributions offered opportunities for thorough discussions with the authors. We acknowledge all of the participants, who contributed with innovations, new research approaches, novel modeling and simulation efforts, and invaluable critical comments. We are also indebted to the outstanding plenary lecturers who highlighted the conference themes with their contributions: Professor Xiong Zhang (Tsinghua University, P. R. China), Professor E.A. Elsayed (Rutgers University, USA) and Professor Noritsugu Umehra (Nagoya University, Japan). We also take this opportunity to thank the members of the International Scientific Committee and reviewers for their time and effort.

Last but by no means least, we offer our sincere gratitude to the symposia organisers for their contribution to the success of the event and the local organising committee for attending to many aspects of the conference demands. For all of them, we are truly very grateful.

Shaker A. Meguid and J.F. Silva Gomes
Funchal / Madeira, June 2013

International Scientific Committee

Aben, H. (Estonia)	Dourado, N. (Portugal)	Masato, Y. (Japan)	Sainov, V. (Bulgaria)
Abreu, M.J. (Portugal)	Eberhardsteiner, J. (Austria)	Meda, A. (Italy)	Santos, J.M. (Portugal)
Adali, S. (S. Africa)	Esteves, J.L. (Portugal)	Meguid, S.A. (Canada)	Santos, Telmo (Portugal)
Afonso, C.F. (Portugal)	Fanguciro, R. (Portugal)	Melo, F.Q. (Portugal)	Semenski, D. (Croatia)
Alexopoulos, N. (Greece)	Fernandes, A.A. (Portugal)	Mileiko, S.T. (Russia)	Silva, A.J. (Portugal)
Alves, A. (Portugal)	Ferreira, D. (Portugal)	Miller, R.E. (Canada)	Silva, Lucas (Portugal)
António, C.C. (Portugal)	Ferreira, J.G. (Portugal)	Mines, R. (UK)	Silva Gomes, J.F. (Portugal)
Banks-Sills, L. (Israel)	Fiúza, A. (Portugal)	Miranda, R. (Portugal)	Sjödahl, M. (Sweden)
Baptista, J.S. (Portugal)	Fonseca E. (Portugal)	Moreira, F. (Portugal)	Soares, C.M. (Portugal)
Barros, R.C. (Portugal)	Gdoutos, E. (Greece)	Moreira, P. (Portugal)	Sousa, L.C. (Portugal)
Bathe, K.J. (USA)	Geraldes, M. (Portugal)	Morimoto, Y. (Japan)	Sousa, R. (Portugal)
Botsis, J. (Switzerland)	Guedes, R.M. (Portugal)	Moura, M.F. (Portugal)	Suleman, Afzal (Portugal)
Bremand, F. (France)	Hejum, Du (Singapore)	Muc, Aleksander (Poland)	Takagi, T. (Japan)
Caetano, E. (Portugal)	Igartua, A. (Spain)	Navarro, C. (Spain)	Talaia, M. (Portugal)
Camanho, P. (Portugal)	Ignaszak, Z. (Poland)	Navas, H. (Portugal)	Tamalsky, E. (Brazil)
Campos, J.R. (Portugal)	Iliescu, N. (Romania)	Pappalettere, C. (Italy)	Tamuza, V. (Latvia)
Castro, C.F. (Portugal)	Jones, N. (UK)	Pieczyska, E. (Poland)	Tavares, J.M. (Portugal)
Castro, P.T. (Portugal)	Jorge, R.N. (Portugal)	Piloto, P. (Portugal)	Tavares, P. (Portugal)
Catarino, A. (Portugal)	Kahlen, F-J. (S. Africa)	Pindera, M.J. (USA)	Thomsen, O.T. (Denmark)
Cavalcante, M. (Brazil)	Klein, W. (Germany)	Prime, M. (USA)	Tooren, M.J. (Netherlands)
Chen, T. (Taiwan)	Kourkoulis, S. (Greece)	Quelhas, O. (Brazil)	Truman, C.E. (UK)
Chenot, J-L. (France)	Laermann, K. (Germany)	Ramesh, K. (India)	VanHemelrijck, D. (Belgium)
Cirne, J. (Portugal)	Langseth, M. (Norway)	Reddy, J.N. (USA)	Varum, H. (Portugal)
Correia, A. (Portugal)	Lima, G. (Brazil)	Restivo, M.T. (Portugal)	Vasques, C. (Portugal)
Croccolo, D. (Italy)	Lino, J. (Portugal)	Ribeiro, J.E. (Portugal)	Vaz, Mário P. (Portugal)
Cunha, A. (Portugal)	Lopes, H. (Portugal)	Robinson, J. (Ireland)	Vilas-Boas, J. (Portugal)
Datta, S. (USA)	Lu, Jian (Hong Kong)	Rocha, A.B. (Portugal)	Wang, Wei-Chung (Taiwan)
Degrieck, J. (Belgium)	Madureira, L. (Portugal)	Rodrigues, H. (Portugal)	Weng, G. (USA)
Dias, G. (Portugal)	Maia, Lino (Portugal)	Rodrigues, J.D. (Portugal)	Yoneyama, Satoru (Japan)
Dietrich, L. (Poland)	Mal, A. (USA)	Ruiz, G. (Spain)	Yoon, Y.C. (Singapore)
Diogo, M.T. (Portugal)	Marques, A.T. (Portugal)	Ruzicka, M. (Czech R.)	Zhang, Z. (China)

Institutional Sponsors

FEUP
University of Porto
Portugal

MADL
University of Toronto
Canada

CCEE
University of Madeira
Portugal

Co-Chairs

J.F. Silva Gomes (*U. Porto*)
Shaker A. Meguid (*U. Toronto*)

Organizing Committee

Carlos C. António, Clito F. Afonso, José M. Cirne
Lino Maia, Mário A.P. Vaz, Paulo G. Piloto, Pedro M.G.P. Moreira

Conference Secretariat

Nuno Pinto, Lurdes Catalino, Carla Gonçalves
M.F. Silva Gomes,

with the support of

ABREU-PCO, Professional Congress Organizer (<http://pco.abreu.pt>)
Mercatura Conference System (<http://www.mercatura.pt>)

ACKNOWLEDGMENTS

IRF2013 conference is sponsored by the following institutions, whose contributions are gratefully acknowledged:

FEUP-Faculdade de Engenharia, Universidade do Porto
MADL-Mechanics and Aerospace Design Lab, University of Toronto
CCEE-Centro de Ciências Exactas e de Engenharia, Universidade da Madeira
Governo Regional da Madeira
IVBAM-Instituto do Vinho, do Bordado e do Artesanato da Madeira, I.P.
APAET-Portuguese Association for Experimental Mechanics
EURASEM-European Society for Experimental Mechanics
SEM-American Society for Experimental Mechanics
BSSM-British Society for Strain Measurement
JSME-Japanese Society of Mechanical Engineering
IMEKO-International Measurement Confederation
AFM-Association Française de Mécanique
DYMAT-European Association for Dynamics of Materials
INEGI-Instituto de Engenharia Mecânica e Gestão Industrial
LABIOMEPLaboratório de Biomecânica do Porto
FCT-Fundação para a Ciência e a Tecnologia
ABREU-PCO, Professional Congress Organizer



TRACKS / MAIN TOPICS:

Topic_A: Analytical and Numerical tools
 Topic_B: Testing and Diagnostics
 Topic_C: Surface and Interface Engineering
 Topic_D: Civil Engineering Applications
 Topic_E: Sensors and Instrumentation
 Topic_F: Tribology, Gears and Transmissions
 Topic_G: Mechanical Design and Prototyping
 Topic_H: Modes of Failure
 Topic_I: Composite Materials
 Topic_J: Nanotechnologies and Nanomaterials
 Topic_K: Biomechanical Applications
 Topic_L: Energy and Thermo-Fluid Systems
 Topic_M: Impact and Crashworthiness
 Topic_N: Case Studies

SPECIAL SYMPOSIA:

Symp_01: Smart Materials and Structures
Coordinator: M.J. Geraldes (UBI)
 Symp_03: Imaging and Visualization
Coordinator: João Tavares (U.Porto)
 Symp_04: Optical Techniques of Experimental Mechanics in Design
Coordinators: Hernani Lopes (IPB), João Ribeiro (IPB)
 Symp_05: Blood Flow Mechanical Behaviour
Coordinators: Catarina Castro (U.Porto), Luisa Sousa (U.Porto)
 Symp_06: Integrity, Reliability and Failure in Dental Materials
Coordinators: J.C. Reis Campos (U.Porto), André Correia (U.Porto)
 Symp_07: Mechanical Characterization of Bone Behaviour
Coordinators: Marcelo Moura (U.Porto), Nuno Dourado (UTAD)
 Symp_10: Structural and Multidisciplinary Optimization
Coordinator: Carlos C. António (U.Porto)
 Symp_11: Innovative Joining Processes
Coordinators: Pedro Moreira (INEGI/U.Porto), Lucas Silva (U.Porto)
 Symp_12: Vibration and Structural Acoustic Analysis
Coordinator: César Vasques (INEGI)
 Symp_13: Dynamics, Stability and Control in Engineering Structures
Coordinator: Rui C. Barros (U. Porto)
 Symp_14: Assessment, Monitoring and Control of Civil Engineering Structures
Coordinators: Alvaro Cunha (U.Porto), Elsa Caetano (U.Porto)
 Symp_15: Behaviour Characterization of Constructions for Earthquake Demands
Coordinators: Humberto Varum (U.Aveiro), Hugo Rodrigues (U.Aveiro)
 Symp_17: Concrete Material Performance
Coordinators: Nuno Dourado (UTAD), Marcelo Moura (U.Porto)
 Symp_18: Safety of Wooden Structures
Coordinators: Elza Fonseca (IPB), Débora Ferreira (IPB)

- Symp_19: Occupational Safety and Health
Coordinators: J. Santos Baptista (U.Porto), M. Tato Diogo (U.Porto), Gilson Lima (LATEC), Osvaldo Quelhas (LATEC)
- Symp_20: Thermodynamics and Thermo-Fluid Systems
Coordinators: Clito F. Afonso (U.Porto), Carlos C. António (U.Porto)
- Symp_21: Lean and Green Manufacturing
Coordinators: Anabela Alves (U.Minho), Rui Sousa (U. Minho), Franz-Josef Kallen (U. Cape Town)
- Symp_26: Advances in Fibrous and Composite Materials for Civil Engineering
Coordinators: Raul Figueiro (U. Minho), Sohel Rana (U.Minho)
- Symp_27: Structural Health Monitoring of Advanced Structures
Coordinators: Júlio C. Viana (Critical Materials, SA), Gustavo Dias (Critical Materials, SA)
- Symp_28: Fire and Structural Engineering
Coordinators: Paulo G. Piloto (IPB), Alberto Meda (U. Roma)
- Symp_29: Metrology, Quality Control and Reliability
Coordinator: Helena V.G. Navas (FCT/UNL)
- Symp_30: Medical Devices and Healthcare Materials
Coordinators: Maria José Abreu (U.Minho), André Catarino (U.Minho)
- Symp_31: Micromechanics and Homogenization of Heterogeneous Media
Coordinators: Marek-Jerzy Pindera (U. Virginia), Marcio Cavalcante (U.Alagoas)
- Symp_32: Failure and Fatigue of Structural Elements
Coordinator: Aleksander Muc (Cracow U.T.)

A. KEYNOTE PAPERS

Keynote Paper 1

INTRODUCTION

Dynamics of structures is a subject that has attracted the attention of many researchers in the last few decades. The development of the system dynamics approach has led to a new paradigm in dynamic analysis. This approach is based on the application of the finite element method to the dynamic analysis of structures. The main advantage of this approach is that it allows the change with time of the dynamic properties of the structure to be identified. This approach was first proposed by H. H. Eversman in 1981. He proposed a method for the dynamic analysis of structures based on the use of the finite element method. In spite of the fact that there has been a considerable amount of research in this area, there has not been a handbook of dynamic analysis of structures.

RESULTS AND CONCLUSIONS

The finite element method is a powerful tool for the analysis of constrained multi-degree-of-freedom systems. The dynamic analysis of structures can be performed using the finite element method. The dynamic analysis of structures can be performed using the finite element method. The dynamic analysis of structures can be performed using the finite element method.

where A represents the matrix of the dynamic properties of the structure, u is the displacement vector, F is the force vector, and M and K are the mass and stiffness matrices, respectively. The required displacement and acceleration can be obtained by solving the equation of motion.

Keynote Paper 2

DISPLACEMENT AND STRAIN FIELDS ASSESSMENT OF PDMS USING DIGITAL IMAGE CORRELATION

Bebiana Mendonça¹, João Ribeiro^{1(*)}, Hernâni Lopes¹, Pedro Martins², Mário Vaz³, Joaquim S. Gomes³

¹ School of Technology and Management (ESTIG), Polytechnic Institute of Bragança, Bragança, Portugal

² Institute of Mechanical Engineering (IDMEC), University of Porto, Porto, Portugal

³ Department of Mechanical Engineering and Industrial Management (DEMEGI), University of Porto, Portugal

(*)*Email: jribeiro@ipb.pt*

ABSTRACT

The main goal of this work is the characterization of the hyper-elastic mechanical behaviour of PDMS. The special specimens of PDMS (Sylgard® 184) were tested in a bi-axial tensile machine. The displacement and strain fields were measured using a commercial digital image correlation system (ARAMIS of GOM) during the tensile test. The experimental measurements are compared with numerical simulations, which use the most popular algorithms of constitutive models to characterize the hyper-elastic behaviour.

Keywords: polydimethylsiloxane, hyper-elastic, digital image correlation, finite element method.

INTRODUCTION

The polydimethylsiloxane (PDMS) is an elastomer with very attractive properties for various applications in different fields, like biomedical engineering (Yabuta, 2003) and electronics (Andersson, 2003). In last years, they have been used in the development of micro and nanodevices (Mata, 2005), optical MEMs (Schneider, 2009), among others. These new applications demand a better understanding of PDMS mechanical behavior, which only could be achieved using new experimental and numerical approaches. Until now, most of experimental works are based on uniaxial tensile tests, which are characterized by high level of dispersion of the mechanical properties. In addition, the new applications of PDMS material demand a more detail characterization of their mechanical behavior, being the optical experimental techniques more suitable to supply this information. These materials present a hyper-elastic behavior, presenting high deformations levels, which can only be measured with a few optical techniques. In this work is used the Digital Image Correlation (DIC) optical technique to measure the displacement and strain fields of a specimen during a bi-axial tensile test.

DIGITAL IMAGE CORRELATION (DIC)

The digital image correlation (DIC) is a non-contact measurement technique (Sutton, 1983, 1986, 1991, 1988) and (Bruck, 1989), which method uses a mathematical correlation to estimate the displacement in the surfaces or structures of components subject to thermal or mechanical stresses. The digital image correlation is based on a comparison of speckle pattern between digital images capture in different deformation states. This allows to obtained the surface a speckle pattern must be created on the object surface in order to evaluate the displacement vector field. To increase the DIC efficiency, the image must be divided in

blocks of pixels with randomly distributed gray levels, being each block unique (Sutton, 1988).

The DIC technique only requires the use of white light source (incoherent light), in order to increase the image contrast. The images are digitally recorded using a video camera during the loading tests, to be post-processing the DIC technique. In the reference state, the image is divide is small blocks of pixels or areas, which presents independent speckle pattern. Through the correlation process of these patterns between the reference and the following recorded images, is obtained the correspondent displacement and strains fields produced by the loading. The correlation technique can be explained base on the schematic diagram represented in Fig.1, where $f(x, y)$ the discrete function that defines the grayscale pixel of the original image and $f^*(x^*, y^*)$ is the final pixel of the image (Hu, 1985). The relationship between the two functions is given by:

$$f^*(x^*, y^*) = f(x + u(x, y), y + v(x, y)) \quad (\text{Eq. 1})$$

where u and v represent the displacement field (Fig. 1).

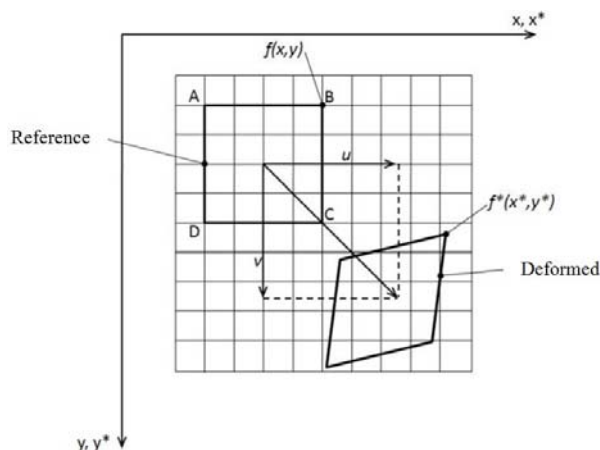


Fig.1 Variation of the initial (reference state) to the final state (deformed state).

The correlation is applied to all patterns in the center of the virtual grating of the initial image, thereby obtaining the displacement field of each network element. Moreover, the strain fields are extracted by analyzing the distortion of the virtual grating.

The displacement field for a random pattern, which is homogeneous and bilinear along the axes x and y is given by:

$$u(x, y) = a_u x + b_u y + c_u xy + d_u \quad (\text{Eq.2})$$

$$v(x, y) = a_v x + b_v y + c_v xy + d_v \quad (\text{Eq.3})$$

For each loading state, the displacements at points A, B, C and D are computed by iterative processes, thus giving an exact solution. These offsets are calculated during the iteration "i" with the components of the displacement field in the iteration "i-1". This iterative process ends at iteration "n" when the relative position of vertices defined by the virtual grating varies below a critical value, δ_0 , defined in the algorithm.

The initial image of pixels moves to a position of sub-pixel on the deformed image. The difficulty lies in defining levels of gray between these points. Therefore, it is used an interpolation function, the most common being the bilinear interpolation of first order (Sutton, 2009). With the mathematical correlation of $f(x, y)$ and $f^*(x^*, y^*)$, it is possible to determine the displacement field $u(x, y)$ and $v(x, y)$. The correlation coefficient can be calculated by the least squares:

$$C_1 = \int_{\Delta M} (f(x, y) - f^*(x^*, y^*))^2 dx dy \quad (\text{Eq.4})$$

where ΔM is the random pattern on the surface. The correlation coefficients are minimized in the determination of the displacement field.

This technique has been used also in the high resolution deformation measurement (Marcellierl, 2001) (P. Hung, 2003).

FINITE ELEMENT METHOD

Currently, the Finite Element Method (FEM) has been used to study the mechanical behavior of hyper-elastic materials. These studies are based on mechanical models obtained from experimental uniaxial tests. To reproduce numerically the nonlinear hyper-elastic behavior of this material is necessary to develop new and more accurate constitutive models. The developments of hyper-elastic models are supported in two different theories: micromechanical model and macro mechanical model. The micromechanical models are developed from the chemical manufacture of the information material, and are based on the concept of the unit cell. The second theory, phenomenological models are based on the material behavior observed during the experimental tests. For development of these models is necessary to know the mechanical behavior of the material, through the experimental tensile test (Holzapfel, 2000).

The Hyper-elastic materials are known to have a non-linear relationship between stress and strain, law not applicable. Thus, the hyper-elastic material behavior is normally defined base on strain energy or stored energy.

The hyper-elastic materials are commonly defined as having nonlinear mechanical properties, presenting large deformations rates. The theory of hyper-elastic material behavior also known, as the Green elastic material, is defined as a function of the Helmholtz free energy, also called the strain energy or stored energy (Ψ). This describes the behavior of this class of materials in terms of energy mechanical, and can be defined according to the following equation:

$$P = \frac{\partial \Psi}{\partial F} \quad (\text{Eq.5})$$

or, in more general:

$$P = -pF^T + \frac{\partial \Psi}{\partial F} \quad (\text{Eq.6})$$

being P the first stress tensor of Piola-Kirchhoff, F^T the transposed of deformation gradient, p a multiple of Lagrange obtained according to the state of tension T .

The function of Helmholtz free energy Ψ is a thermodynamic potential, which measures the useful work for a closed thermodynamic system with constant temperature and volume (Pascon, 2008).

A model of hyper-elastic materials depends on the definition of strain energy function which assumes different shapes, according to the material or class of materials considered. This function is obtained from symmetry and thermodynamic energy considerations (Pascon, 2008).

For simplicity, is assumed the material is isotropic and incompressible. As the isotropic material, the strain energy functions (Ψ), depend on the invariants of the deformation.

$$\Psi_{isotr\u00f3pico} = \Psi(I_1, I_2, I_3) \quad (\text{Eq.7})$$

where the invariants are define as:

$$I_1 = \sum_{i=1}^3 \lambda_i^2$$

$$I_2 = \sum_{i,j=1}^3 \lambda_i^2 \lambda_j^2 \quad i \neq j \quad (\text{Eq.8})$$

$$I_3 = \prod_{i=1}^3 \lambda_i^2$$

being, λ_1 , λ_2 and λ_3 are the principals deformations.

If the material is too incompressible, the third invariant $I_3 = 1$, equation 7 is defined as:

$$\Psi_1 = \Psi(I_1, I_2) \quad (\text{Eq.9})$$

From the equation of the Cauchy tensor and the calibration of the main experimental tensile tests (uniaxial and biaxial) are determined the constitutive equations of hyper-elastic models.

RESULTS

The load curves of the bi-axial tensile test are shown in Fig. 2. By observing the load-displacement curve it is possible to verify a typical behaviour of hyper-elastic materials.

The specimen preparation involves the application of a random speckle pattern on the material surface by applying a thin white and black ink coat. A sequence of images of the specimen surface was digital using video CCD camera recorded during the bi-axial tensile test. These were later post-processed by the commercial DIC software in order to extract the displacement and strain fields.

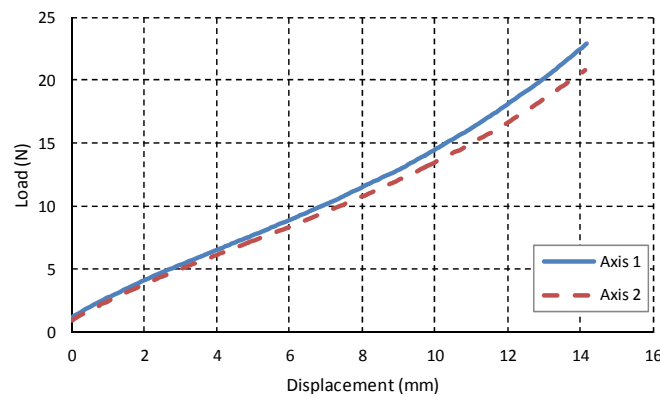


Fig.2 Bi-axial tensile test results

In the Fig. 3 are shown the displacement and strain fields for a load case of 7 N applied in the vertical direction, with a crosshead speed of 5mm/min.

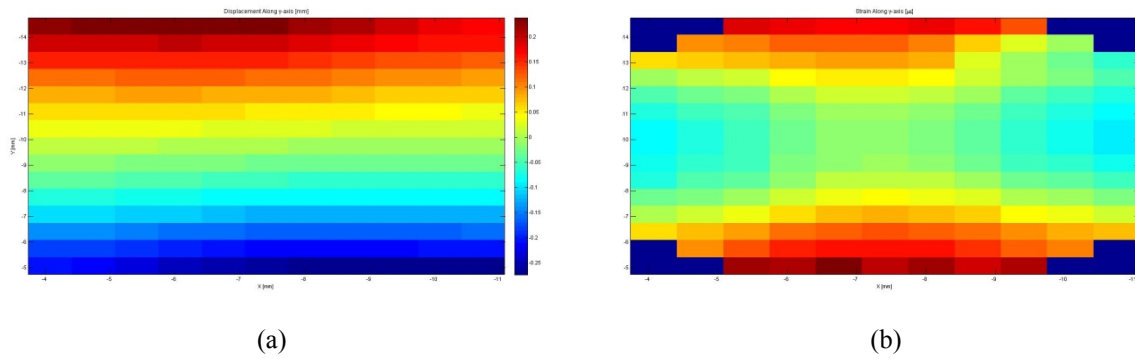


Fig.3 The experimental results vertical direction, obtained using digital image technique DIC: (a) displacement field; (b) strain field.

A non-symmetry vertical displacement distribution is observed in the Fig. 3, which can be explained by the misalignment of the specimen during the loading test. The correspondent numerical simulations using finite element method are presented in Fig. 4.

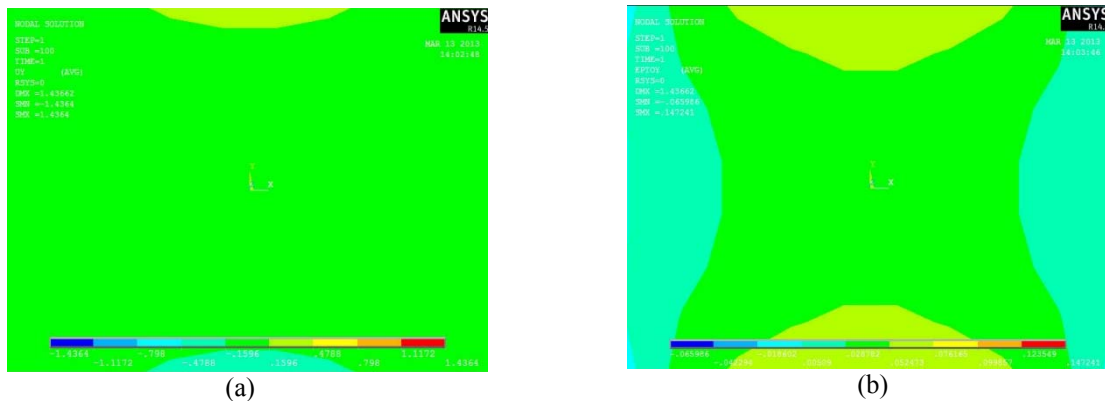


Fig.4 The experimental results vertical direction, obtained using Finite Element Method (FEM): (a) displacement field; (b) strain field.

In the Figure 5 is presented a comparative analysis of the displacement profile for the vertical direction between the experimental measurements and the numerical simulation. This reveal a similar trend of the material behavior, i.e. there is an approximately linear increase of the displacements.

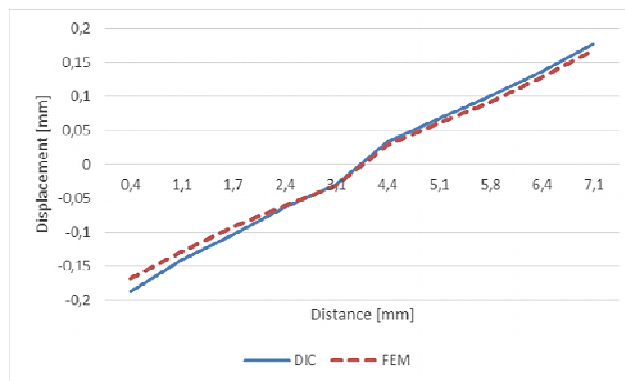


Fig.5 Variation of displacement in the Y direction, measured experimentally with the DIC and determined numerically with FEM.

The results show a small difference in the displacement values between the experimental and numerical simulation, being the average relative error 8.3%, which is considered very acceptable for this type of test.

CONCLUSIONS

The optical technique of Digital Image Correlation proved well adapted for displacement and strain fields measurement of hyper-elastic materials. The results show that this technique correlates well in the displacements when high spatial resolution is used, allowing extracting the information for large deformation amplitudes. This technique is highly dependent on the quality of the random pattern. In this work, it was necessary to test different types of patterns and, it was found that, the use of black ink spray lead to acceptable results. However, further tests are needed in order to improve the quality of the results.

REFERENCES

- Andersson, L.H., Hjertberg, T. Silicone elastomers for electronic applications. *Journal of Applied Polymer Science*, 2003, 88, p. 2073–2081.
- Mata, A., Aaron, J.F., Roy, S. Characterization of Polydimethylsiloxane (PDMS) Properties for Biomedical Micro/Nanosystems. *Biomedical Microdevices*, 2005, 7, p. 281–293.
- Schneider, M.F., Draheim, J., Kamberger, R., Wallrabe, U. Process and material properties of polydimethylsiloxane (PDMS) for Optical MEMS. *Sensors and Actuators A*, 2009, 151, p. 95–99.
- Yabuta, T. Synthesis of PDMS-Based Porous Materials for Biomedical Applications. *Journal of Sol-Gel Science and Technology*, 2003, 26, p. 1219–1222.
- M. Sutton, J. Wolters, H. Peters, F. Ranson and R. McNeil, "Determination of Displacements Using an Improved Digital Correlation Method", *Image and Vision Computing*, **1**: 133-139, 1983.
- M. Sutton, Q. Cheng, H. Peters, J. Chao and R. McNeill, "Application of an Optimized Digital Correlation Method to Planar Deformation Analysis", *Image and Vision Computing*, **4**: 143-151, 1986.
- M. Sutton, L. Turner, A. Bruck, and A. Chae, "Full-field Representation of Discretely Sampled Surface Deformation for Displacement and Strain Analysis", *Experimental Mechanics*, **31**: 168-177, 1991.
- M. Sutton, R. McNeill, J. Jang, and M. Babai, "Effects of Subpixel Image Restoration on Digital Correlation Error", *Journal of Optical Engineering*, **27**: 870-877, 1988.
- A. Bruck, R. McNeil, M. Sutton, and H. Peters, Digital "Image Correlation Using Newton-Raphson Method of Partial Differential Correction", *Experimental Mechanics*, **29**: 261-267, 1989.
- T. Hu, W. Ranson, M. Sutton and W. Peters, "Application of Digital Image Correlation Techniques to Experimental Mechanics", *Experimental Mechanics*, **25**: 232-244, 1985.
- M. Sutton, J. Orteu and H. Schreier, *Image Correlation for Shape, Motion and Deformation Measurements*, Springer Science and Business Media, 2009.
- H. Marcellierl, P. Vescovo, et al., "Optical analysis of displacement and strain fields on

human skin", *Skin Research and Technology*, **7**: 246-253, 2001.

P. Hung and A. Voloshin, "In-plane Strain Measurement by Digital Image Correlation", *Journal of the Brazilian Society of Mechanical Sciences and Engineering*, **25**: 215-221, 2003.

J. P. Pascon, "Modelos Constitutivos para Materiais Hiperelásticos: Estudo e Implementação Computacional", Dissertação de Mestrado, Universidade de São Paulo, 2008.

F. Azar, D. Metaxas and D. Schnall, "A deformable finite element model of the breast for predicting mechanical deformations under external perturbations", *Academic Radiology*, **8**: 965–975, 2001.

J. Humphrey, "Continuum biomechanics of soft biological tissues", *Proceedings of Mathematics and Physics Engineering Science (Series A)*, 2003.

K. Miller, "Constitutive model of brain tissue suitable for finite element analysis of surgical procedures", *Journal of Biomechanics.*, **32**: 531–537, 1999.

G. Holzapfel, "Nonlinear Solid Mechanics: A Continuum Approach for Engineering", John Wiley & Sons, LTD, New York, 2000.