

Knowledge and grazing journeys: dialogues on adaptive responses to climate change in Montesinho (Portugal) – PASTOPRAXIS (FCT - MTS/CAC/0028/2020)



Frazão-Moreira, Amélia (CRIA – NOVA FCSH, IN2PAST), Castro, José (IPB), Castro, João Paulo (CIMO – IPB, SusTEC), Pais, Isa (CIMO - IPB), Amieira, João (CRIA – NOVA FCSH), Seripieri, Vítor (CIMO - IPB), Castro, Marina (CIMO – IPB, SusTEC)

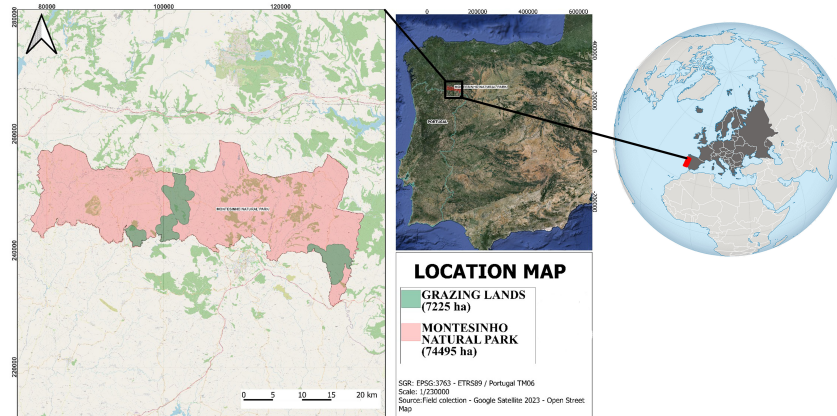
MAIN GOALS

- Biophysical, ecological and sociocultural local adaptive responses of pastoralism (small ruminant indigenous breeds) to climate change.
- Understanding the place of local ecological knowledge and climate perceptions in adaptive responses.



ENGAGED RESEARCH

Building on the dialogue between different types of knowledge (herders, state service technicians, zootechnical and forestry scientists, anthropologists/ethnobiologists), the results are intended to equip practitioners and decision-makers with tools that guarantee the continuity of mountain pastoralism while safeguarding local experiences and knowledge.



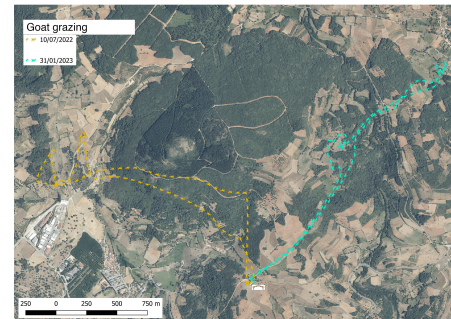
The mountainous landscape of the Montesinho Natural Park and the lives of its inhabitants have been undergoing transformations due to social and economic changes that are reflected in depopulation, livelihood struggles and the abandonment of traditional agro-pastoral systems.

RESULTS

- Socio-ecological changes in the agro-pastoral system
- Decline in water resources and seasonal pattern change
- Land cover and land use change
- Uncertainty about the future



Workshop on landscape memories (photo-elicitation method) - January 2024



Mapping of grazing - examples of summer and winter foraging journeys

METHODS and FIELD COLLABORATIONS

Monitoring landscape evolution

Landscape and land use transformation - at regional and local scales

Mapping of grazing/browsing paths (GPS)

Current paths and the grazing /browsing density and seasonality (6 case studies)

Walking ethnography / Informal conversations / Workshops (photo elicitation)

Transformation of the production system and producers' knowledge and perceptions about climate change, biodiversity, conservation, and the future

Interdisciplinary analysis and integration of results

Determination of the biophysical, ecological and sociocultural implications of adaptive transformations

Enhancement of the knowledge base - Participatory restitution and debate workshops - publications

Provide the tools to ensure the continuity of pastoralism



Walking ethnography - September 2023



Workshop with representatives of regional producers association and state service technicians (veterinary, agriculture, conservation and forestry) - July 2023