

INTERNATIONAL UNION OF FOREST RESEARCH ORGANIZATIONS

IUFRO.

IUFRO, the International Union of Forest Research Organizations, offers a global network for voluntary cooperation. The network is open to all individuals and organizations dedicated to forest and forest products research and related disciplines. IUFRO aims to contribute to achieving the Sustainable Development Goals set by the United Nations.

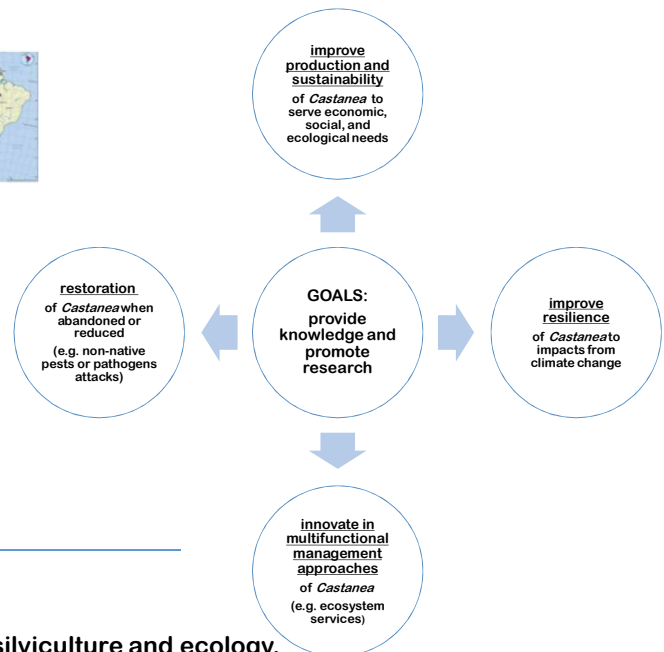
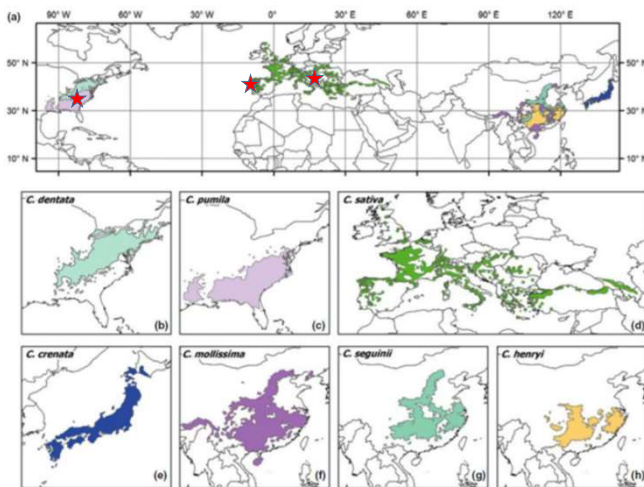


Participate.

IUFRO is a global, non-profit, non-governmental and non-discriminatory organization established in 1892 with headquarters in Vienna, Austria. It unites about 650 member organizations in more than 120 countries representing over 15,000 scientists.



Presentation of the new IUFRO Working Party 1.01.13 ECOLOGY and SILVICULTURE of CHESTNUT (*Castanea*)



❖ **Activities in progress:**

- Promotion of papers on state of the knowledge of chestnut silviculture and ecology.

Forest Ecology and Management Impact Factor 3.558 CiteScore 5.8

Call for Papers on Special Issue: Ecology and Management of Castanea

*****Extended submission deadline: 30 September, 2022*****

<https://www.journals.elsevier.com/forest-ecology-and-management/call-for-papers/call-for-papers-on-special-issue-ecology-and-management-of-castanea>

- Newsletter: <https://www.iufro.org/science/divisions/division-1/10000/10100/10113/publications/>

+++ news on group's activities, conferences, call x papers, featured papers & books +++

- Meetings or workshops to share information, build collaboration, projects and develop synthesis on knowledge gaps.

- Plan a Special session dedicated to *Castanea* within next IUFRO World Congress

XXVI IUFRO World Congress 2024
"Forest and Society Towards 2050"
Stockholm, Sweden,
<https://iufro2024.com/>

We are a team of researchers with expertise in forest management, ecology, and silviculture.

We would like to **INCLUDE** researchers actively interested in **PROPOSING**, **PARTICIPATING** and **SHARING** common research ideas and themes.

***** IF YOU HAVE INTERESTS AND PROPOSALS TO SHARE, JOIN US *****

<https://www.iufro.org/science/divisions/division-1/10000/10100/10113/>



Stacy Clark stacy.l.clark@usda.gov

USDA Forest Service, Knoxville, Tennessee, USA



Maria do Sameiro Patricio sampat@ipb.pt

Centro de Investigação de Montanha, Instituto Politécnico de Bragança, Bragança, Portugal



Veronica Loewe Muñoz vloewe@infor.cl

Instituto Forestal, Ñuñoa, Santiago, Chile



Enrico Marcolin enrico.marcolin@unipd.it

Università di Padova – Dipartimento TESAF, Legnaro (PD) - Italy